

- Well Presented Modern Ground Floor Apartment
- Cul-De-Sac Location In Stonebridge Development
- Two Well Portioned Bedrooms / Master En-Suite
- Spacious Lounge Room
- Luxury Fitted Kitchen With Dining Area
- Built in Storage In Apartment
- Two Communal Car Parking Spaces With Lawns
- Easy Access To Cul-De-Sac With New Entrance From Green Road

Let's start with the: Ground Floor



Entrance Hallway



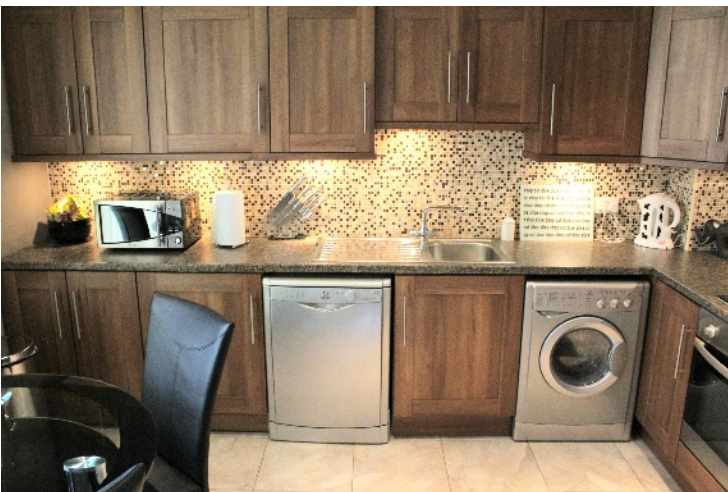
Lounge Room - 14'01" x 13'11"



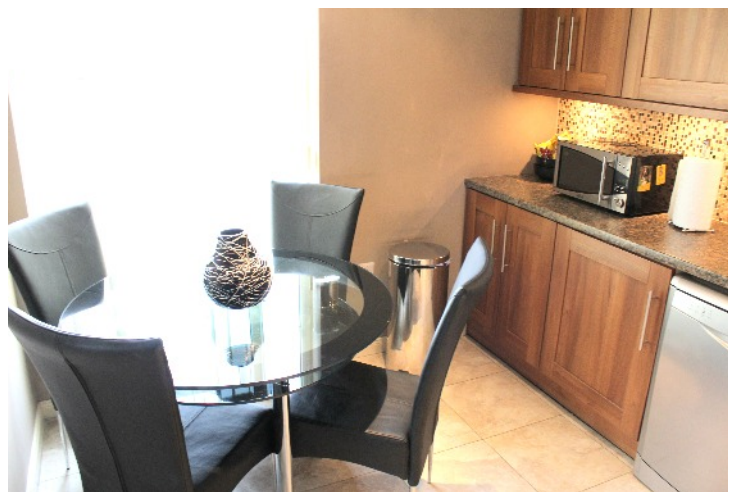
Kitchen 12'02" x 9'.00" Integral Hob & Oven

Fantastic Modern Two Bedroom Apartment in the much sought after Stonebridge Development, nestled at the top of a Cul-De-Sac location.

This apartment offers easy living in a quiet popular area with superb access to both Bangor and Newtownards, There is also convenient access to the carriageway system To Belfast City or the many local amenities in close Proximity including Bloomfield shopping centre.

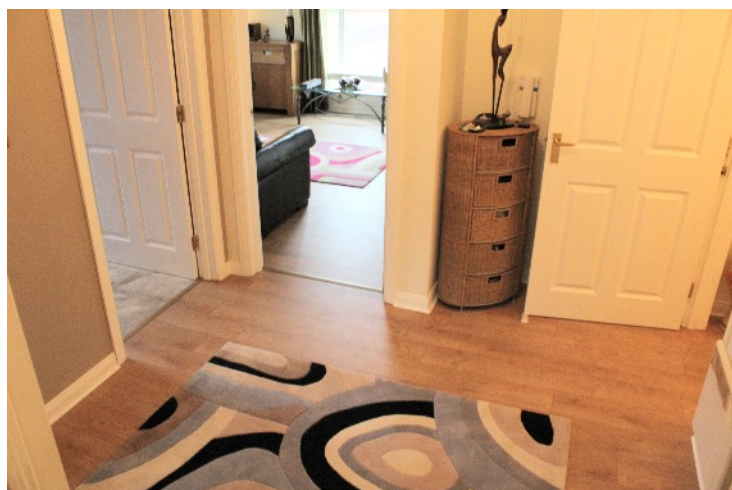


Plumbed for Washing Machine & Dishwasher



Dining Area in Kitchen

Ground Floor



Hallway



Master Bedroom 13'07" x 12'02"



Master Bedroom



En-Suite Shower Room In Master Bedroom



Bedroom Two 12'02" x 9'06"



Bathroom 9'11" x 5'5" Three piece white suite

External Front / Rear



Main Entrance Front Door



Side & Rear Parking

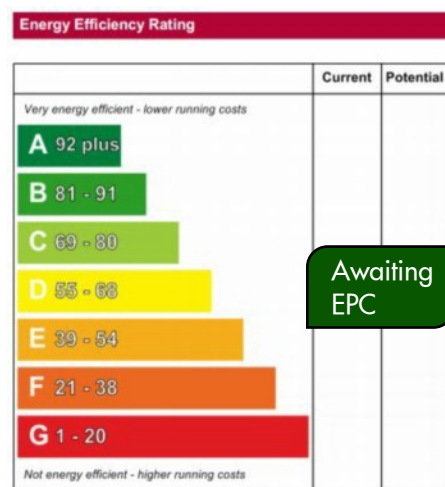


Directions: Turning onto the Green Road from the Bangor / Newtownards Carriageway, proceed along the road and take the new last Stonebridge entrance on the right, then take the 2nd right into Cul-De-Sac.

Viewing: Viewing appointments can be arranged through Gordon Smyth Estate Agents.



Enquire in office for advice on Sale / Rental Valuations to fit any requirements.



This brochure has been produced by Gordon Smyth Estate Agents as a representation of said property, all details here within cannot be relied on as fact and any potential purchasers must inspect said property to satisfy themselves in event of purchase. All measurements are taken to the nearest 3 inches.