



ORDNANCE SURVEY OF NORTHERN IRELAND[®]

333112

314534

314500

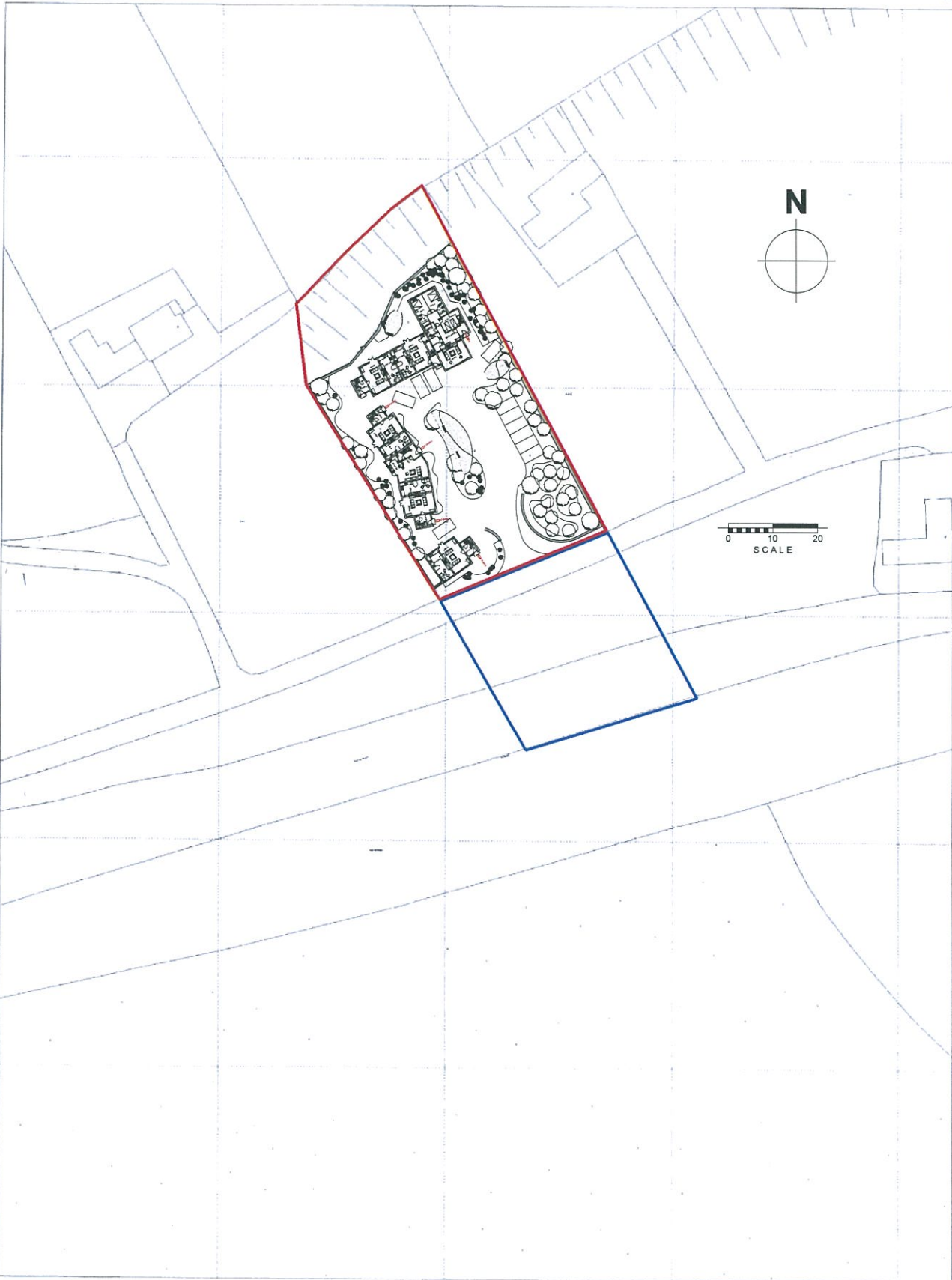
314550

314500

314450

314400

COPYRIGHT STATEMENT
Except as otherwise permitted under the Copyright Designs and Patents Act 1988 this map may only be reproduced, stored or transmitted in any form or by any means, with the permission of Land & Property Services



314354

332950

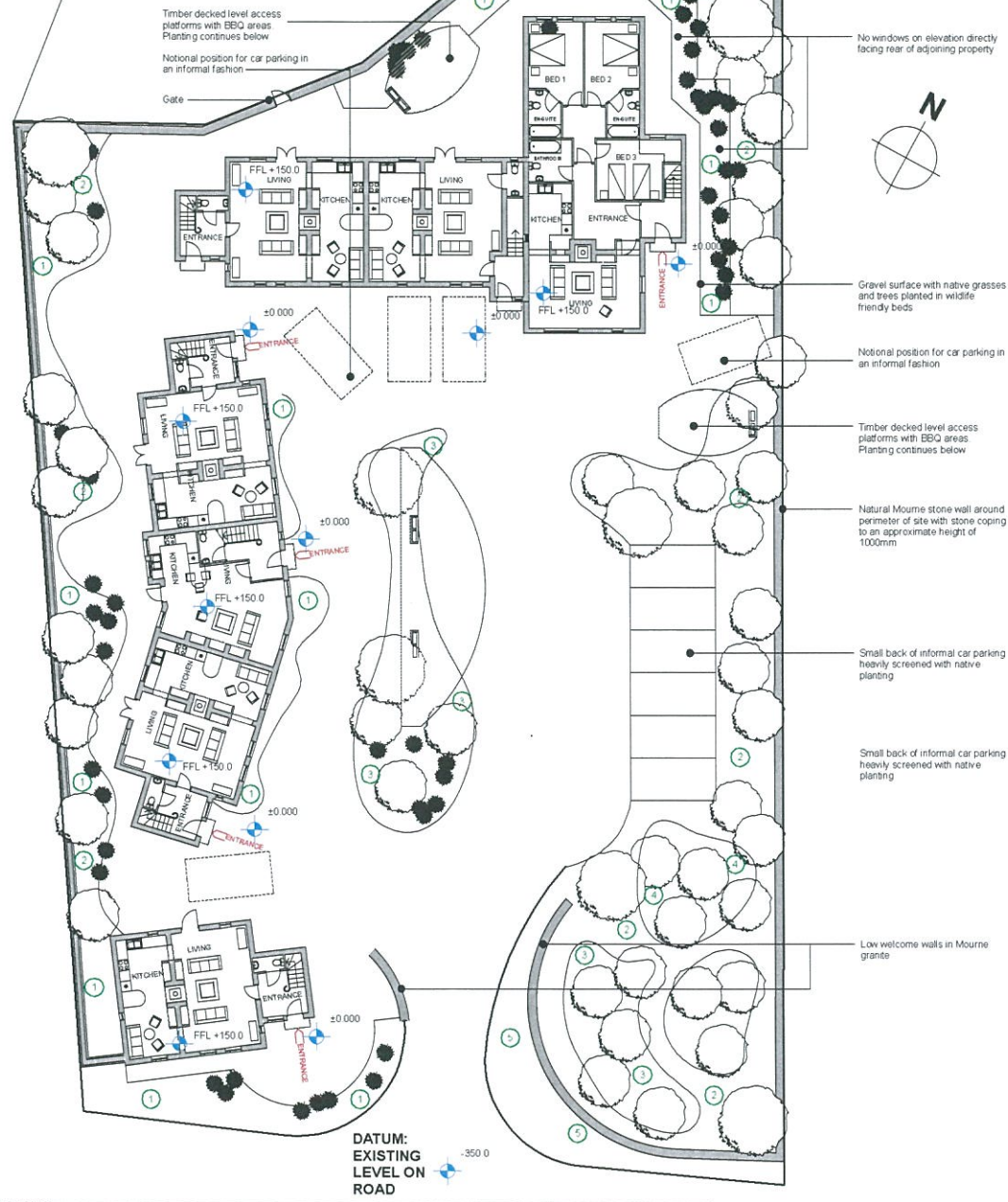
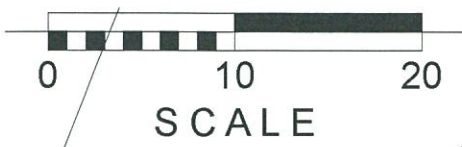
332950

333000

333050

333100

Every care has been taken to ensure accuracy in the compilation of this map at the time of publication. Land & Property Services cannot, however, accept responsibility for errors or omissions and when such are brought to our attention, the amendment of any future publication as appropriate shall be entirely at our discretion. Ordnance Survey of Northern Ireland and ACEmap[®] are registered Trademarks of Department of Finance and Personnel.



**DATUM:
EXISTING
LEVEL ON
ROAD** -350.0

PLANTING

The planting can be characterised as 'seaside planting'. The plants will be indigenous varieties of the sort of plants naturally found in and around beaches on this area of coast.

The majority of shrubby species are evergreen, with grey or silver foliage. Most of the grassy species proposed are also evergreen.

Five 'planting mixes' are proposed, each one composed of a mix of visually complementary species, and fitting one of two height categories: above 60-150cms and below 60cms.

Certain species used are common to several mixes, and the overall visual texture and foliage colour is similar, ensuring continuity and repetition.

Each mix can be used as a block, or band within a strip planting, or a drift within an extended area.

Plant varieties within each mix are blended, to create a soft naturalistic look, and to avoid the blocky effect of conventional amenity plantings.

A number of larger grasses are used for scattering throughout the plantings to create rhythm and continuity. Grasses will also create movement.

Natural gravel is placed between the plants on top of a weed membrane ensuring the quality of the landscape scheme is protected with minimum maintenance.

The planting mixes are indicated on the plan in green numbers 1-5.

- Thick planted landscape buffer between site and adjoining property. Ground graded in slope and landscaped as shown
- No windows on elevation directly facing rear of adjoining property
- Gravel surface with native grasses and trees planted in wildlife friendly beds
- Notional position for car parking in an informal fashion
- Timber decked level access platforms with BBQ areas. Planting continues below
- Natural Mourne stone wall around perimeter of site with stone coping to an approximate height of 1000mm
- Small back of informal car parking heavily screened with native planting
- Small back of informal car parking heavily screened with native planting
- Low welcome walls in Mourne granite

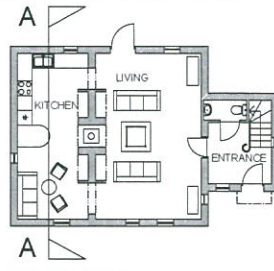
REV	DESCRIPTION	DATE	BY	CHK
CLIENT FISHERMAN'S COVE HOLIDAY COTTAGES				
DESIGN SITE PLAN				
SCALE	DRAWN	CHECKED	DATE	
1:200	JGD	JGD	10.03.14	

HUGHES MCMICHAEL
 97 University Street Belfast BT7 1UP
 Phone: +44 (0)2890 247861
 Fax: +44 (0)2890 232121
 Email: admin@hughesmcmichael.com

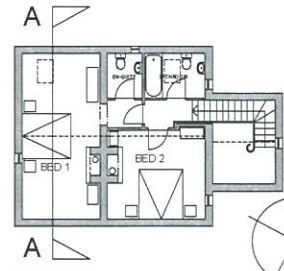
1918	PL 01	-
------	-------	---



BLOCK A
ELEVATION 1



GROUND



FIRST

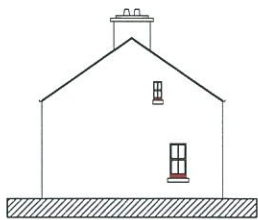


PLANS

PLANS

MATERIALS AND FINISHES

- Roof:**
Slate with flush gutter and eaves
- Rain Water Goods:**
Cast iron type painted to match timberwork painted red
- Walls:**
Whitewashed smooth render finish deep reveals and deep cills all in white
Natural Stone finish to areas indicated
- Windows:**
Timber sliding sash painted red
- Doors:**
Tongue and Groove softwood painted red
- Block and Tackle/Edge reveal protection to large building:**
Cast iron painted red



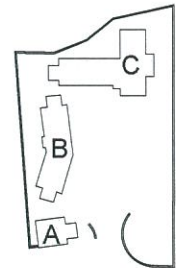
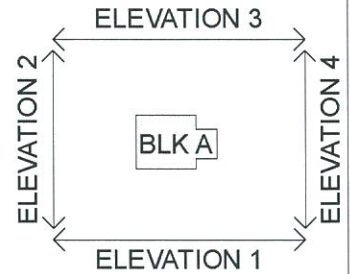
BLOCK A
ELEVATION 2



BLOCK A
ELEVATION 3



BLOCK A
ELEVATION 3 (Storm shutters open)



BLOCK A
ELEVATION 4



BLOCK A
SECTION A-A

REV	DESCRIPTION	DATE	DRN	CHK
CONTRACT FISHERMAN'S COVE HOLIDAY COTTAGES				
DRAWING BLOCK A PLANS SECTION ELEVATIONS				
SCALE	DRAWN	CHECKED	DATE	
1:100	JGD	JGD	30.04.14	



HUGHES McMICHAEL
97 University Street Belfast BT7 1HP
Phone +44 (0)2890 347861
Fax +44 (0)2890 233221
Email admin@hughesmcmichael.com

JOB NUMBER	DRAWING NUMBER	REVISION
1918	PL 02	-

ELEVATIONS

MATERIALS AND FINISHES

Roof:
Slate with fish pattern and eaves

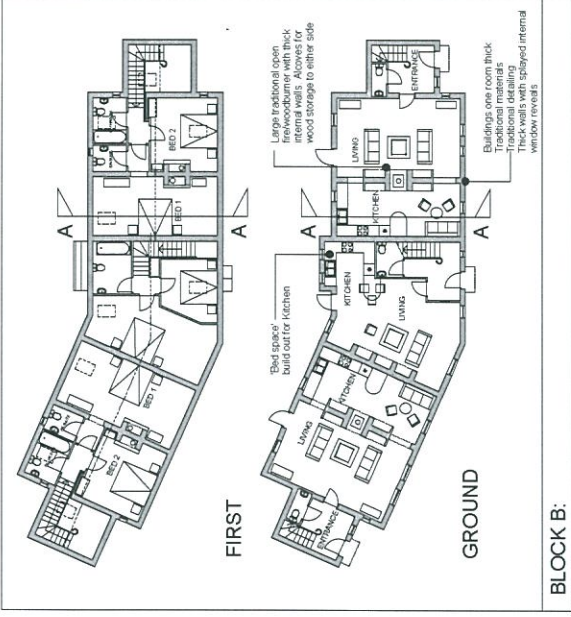
Rain Water Goods:
Cast iron type painted to match timberwork, painted red

Walls:
Whitewashed smooth render finish deep reveals and deep cills all in white
Natural Stone finish to areas indicated

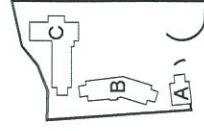
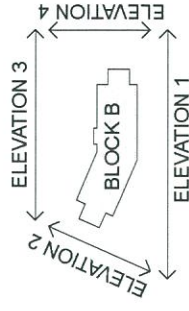
Windows:
timber siding, sash painted red

Doors:
Tongue and Groove softwood painted red

Block and Tackle/Edge reveal protection to large building:
Cast iron painted red



PLANS

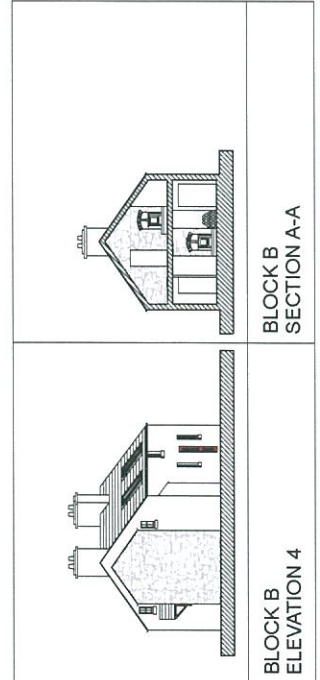
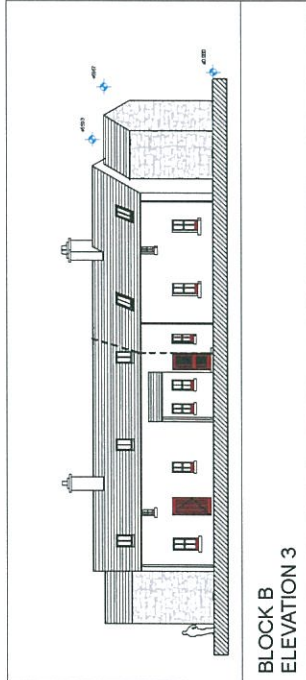
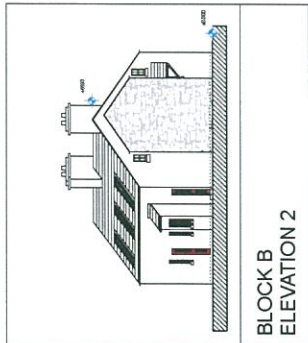
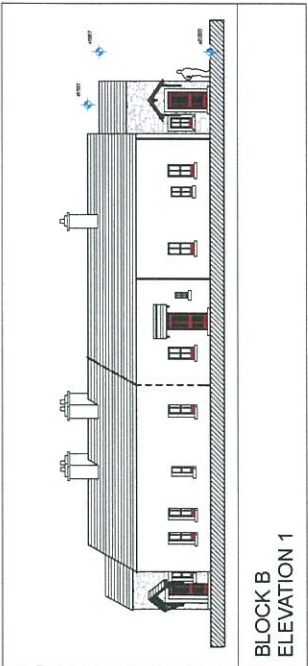
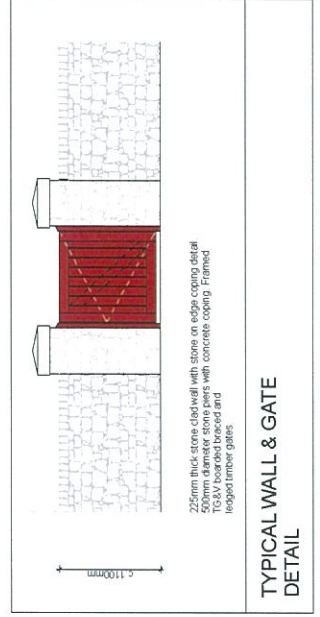


NO.	REVISIONS	DATE	BY	CHKD.
PREHARVEY'S COVE HOLIDAY COTTAGES				
BLOCK B				
PLANS SECTION ELEVATIONS				
SCALE	DATE	PROJECT NO.	JOB NO.	DATE
1:100	1/2021	1918	1918	14/11/21

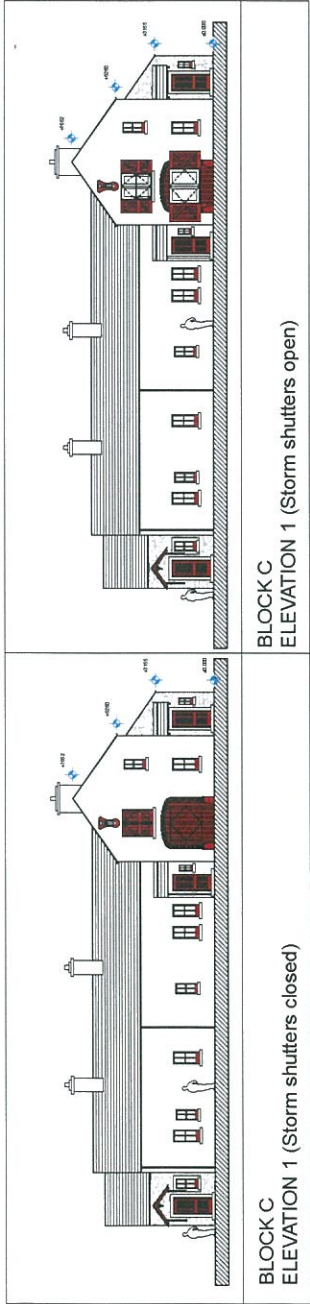


HUGHES MACMICHAEL
Architects
100, University Street, Glasgow, G2 3JF
Phone: 0141 202 4289
Fax: 0141 202 4290
E-mail: info@hughesmacmichael.co.uk

DATE	PROJECT NO.	JOB NO.	DATE
1918	1918	1918	1918



ELEVATIONS

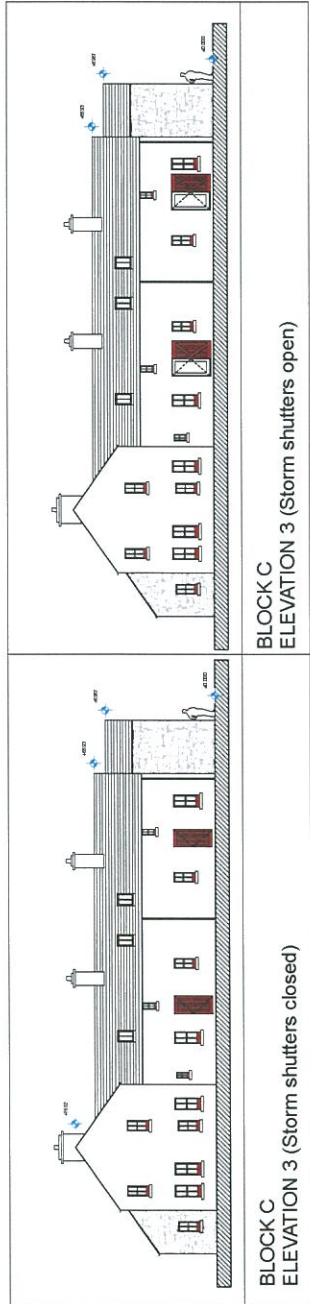


BLOCK C
ELEVATION 1 (Storm shutters closed)

BLOCK C
ELEVATION 1 (Storm shutters open)

BLOCK C
ELEVATION 2

BLOCK C
SECTION A-A



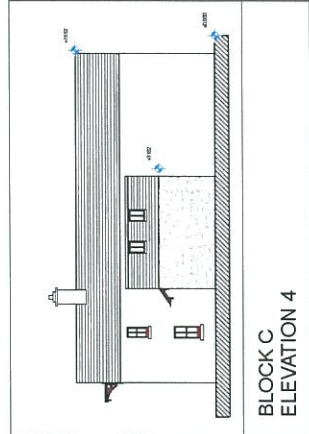
BLOCK C
ELEVATION 3 (Storm shutters closed)

BLOCK C
ELEVATION 3 (Storm shutters open)

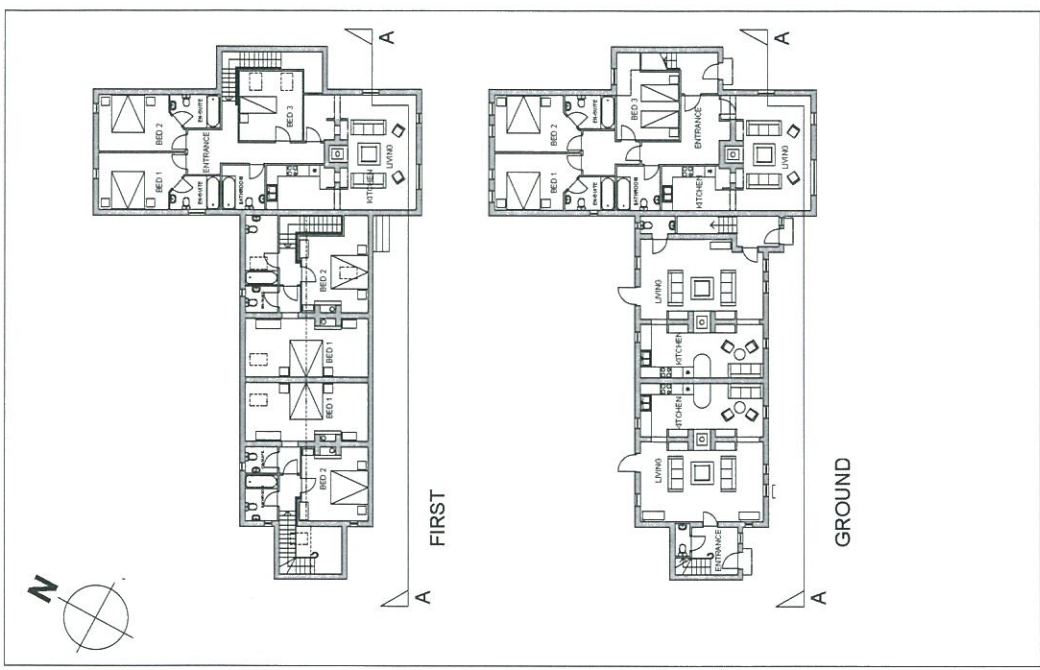
BLOCK C
ELEVATION 4

MATERIALS AND FINISHES

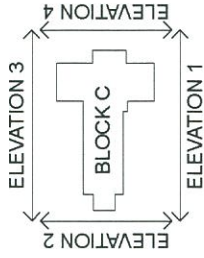
- Roof:** Slate with flush gutter and eaves
- Rain Water Goods:** Cast iron type painted to match timberwork painted red
- Walls:** Whitewashed smooth render finish deep reveals and deep cills, all in white
- Windows:** Natural Stone finish to areas indicated
- Windows:** Timber sliding sash painted red
- Doors:** Tongue and Groove sashwood painted red
- Block and Tack/ledge reveal protection to large building:** Cast iron painted red



ELEVATIONS

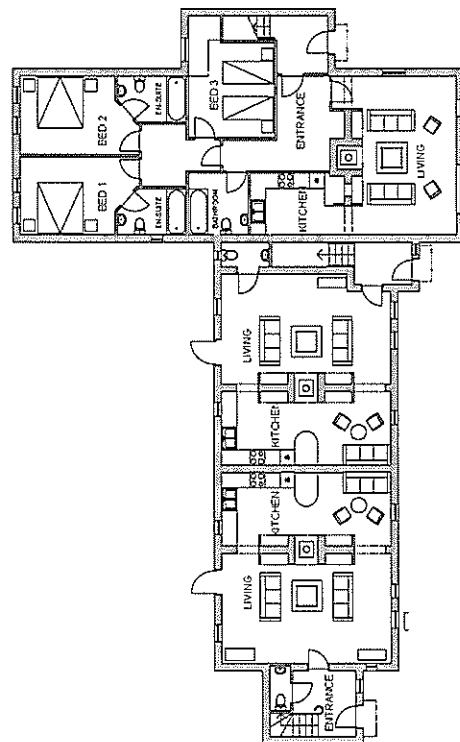
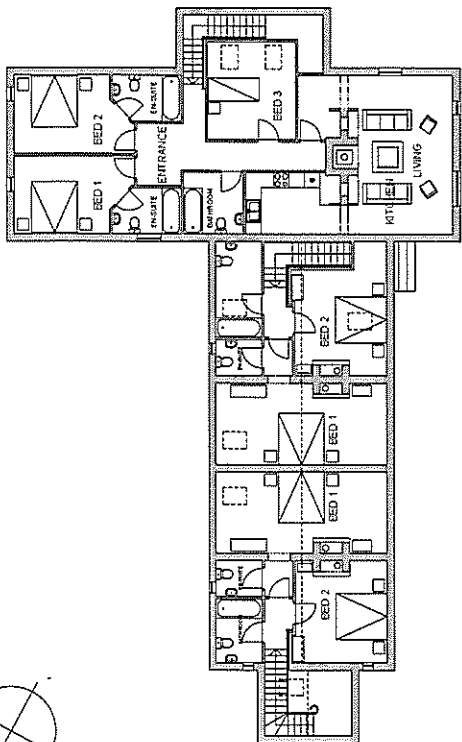
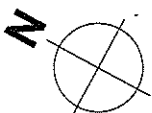
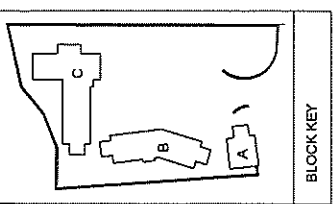


PLANS



DATE	DESCRIPTION	BY	CHKD
HUGHES McMICHAEL ARCHITECTS HOLIDAY COTTAGES PROJECT			
BLOCK C PLANS SECTION ELEVATIONS			
1.1.00		JJD	20.04.16
1918	PL 04	HUGHES McMICHAEL 87 Unwin Rd, Brixton, London SW2 1NU Phone: +44 (0)20 8024 8180 Email: info@hughesmichael.com	

BLOCK C:

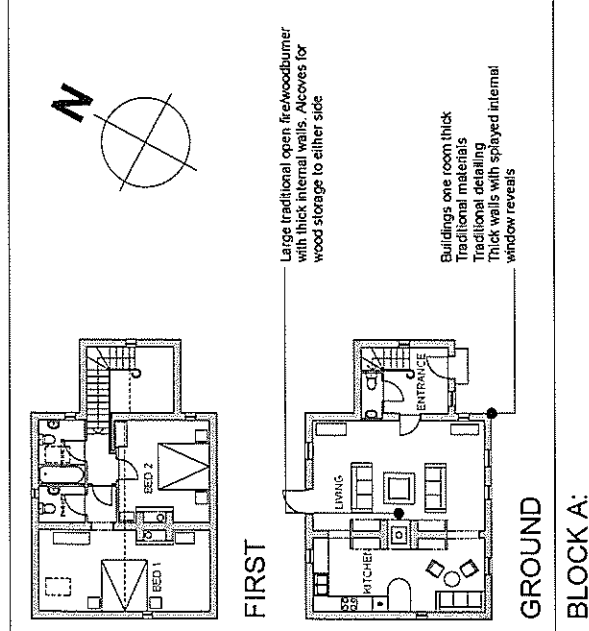
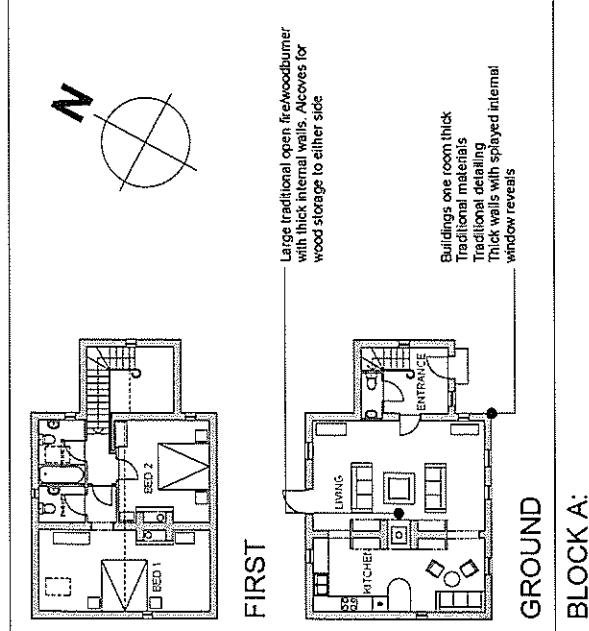


REV	DESCRIPTION	DATE	DRAWN	CHECKED

CONTRACT		DATE		DATE
FISHERMAN'S COVE HOLIDAY COTTAGES		OPERATION		10.05.14
FLOOR PLANS				
SCALE	MARK	CHECKED	DATE	
1:100	JCD	JCD	10.05.14	

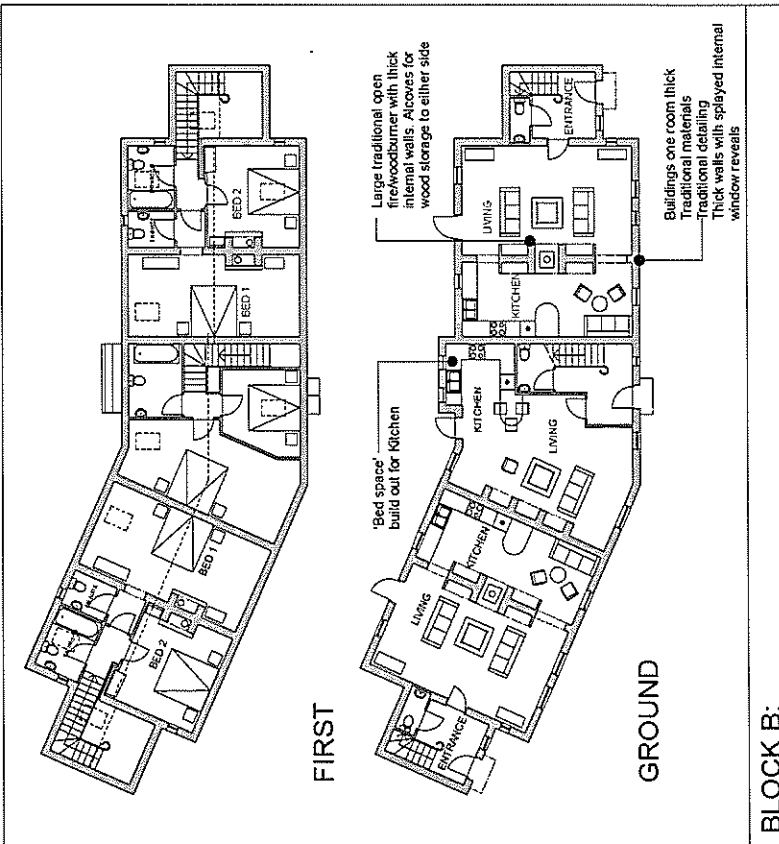
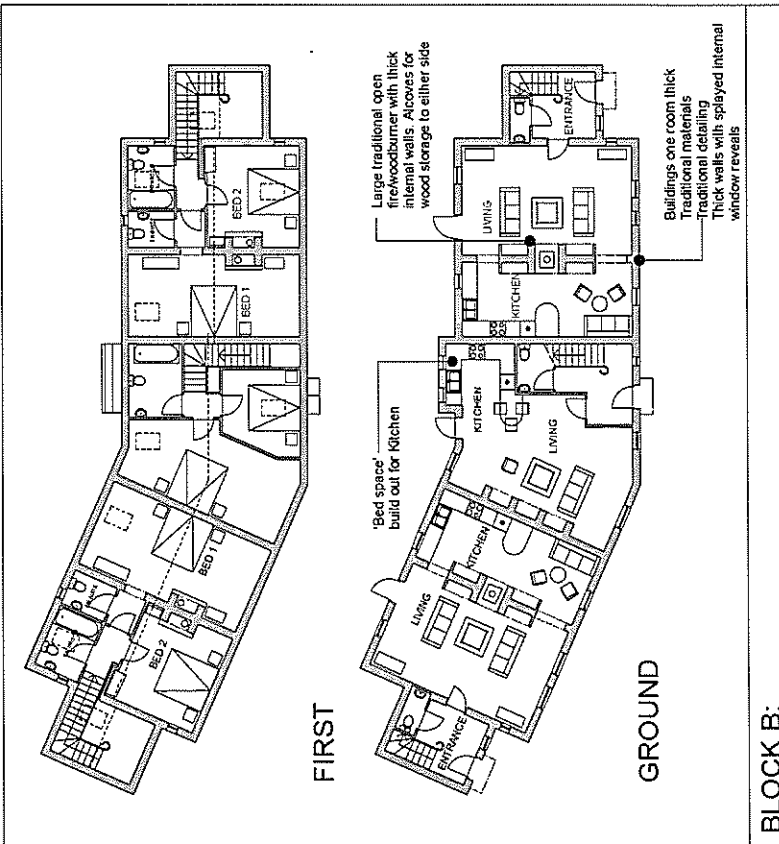
HUGHES McMICHAEL
 97 Levensky Street, Balmat BT7 4P
 Phone +44 (0)1200 247601
 Fax +44 (0)2500 23321
 Email admin@hughesmichael.com
 ARCHITECTS

1918	PL 05	-
------	-------	---



Large traditional open fire/woodburner with thick internal walls. Alcoves for wood storage to either side

Buildings one room thick
 Traditional materials
 Traditional detailing
 Thick walls with splayed internal window reveals



'Bed space' build out for Kitchen

Large traditional open fire/woodburner with thick internal walls. Alcoves for wood storage to either side

Buildings one room thick
 Traditional materials
 Traditional detailing
 Thick walls with splayed internal window reveals

BLOCK B: