



243 Whitepark Road, Lisnagunogue BUSHMILLS, BT57 8SP

Site for Proposed Development of 4 Detached Dwellings
(with planning approval dated from 13/4/2011)

This small select development proposal is located in the picturesque hamlet of Lisnagunogue, a popular area both with residents and holiday makers. Situated on the famous North Antrim Coast Road, approximately 10 minutes drive from Bushmills, 15 minutes from Ballycastle and convenient to The Giants Causeway.

Full planning approval for four 3 bedroom detached dwellings with parking spaces.

For Copy Maps and Planning Approval contact Selling Agent.

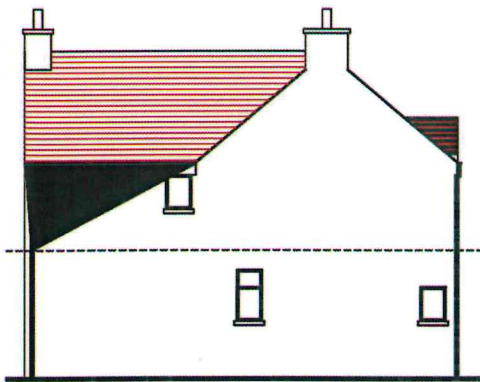
PRICE: Offers Around £250,000

BY APPOINTMENT THROUGH AGENT

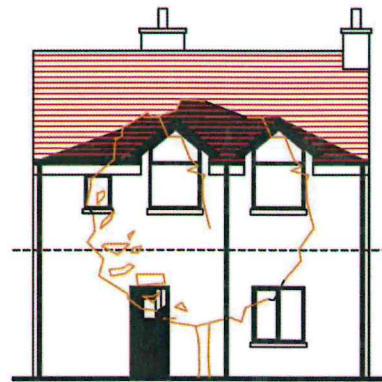
13 Ann Street, Ballycastle, Co. Antrim, BT54 6AA

Tel: 028 207 62353/62082 Fax: 028 207 62126

email: property@pjmcilroy.co.uk web: www.pjmcilroy.com



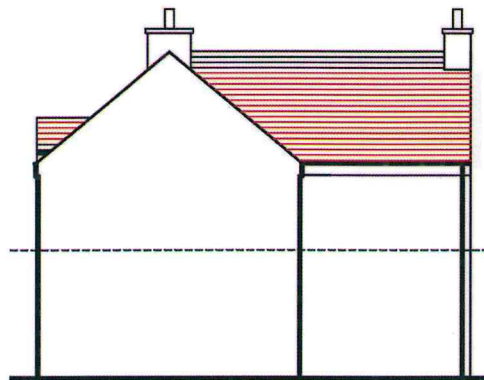
SIDE ELEVATION



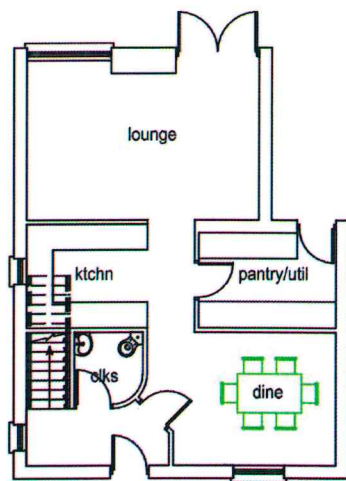
FRONT ELEVATION



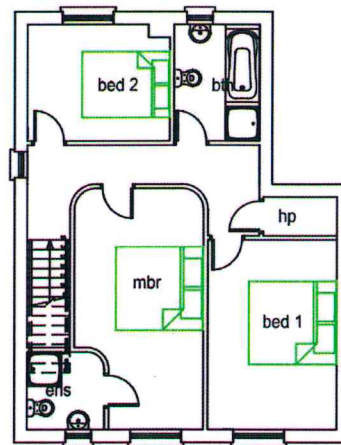
REAR ELEVATION



SIDE ELEVATION

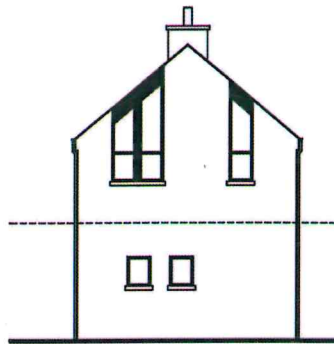


GROUND FLOOR

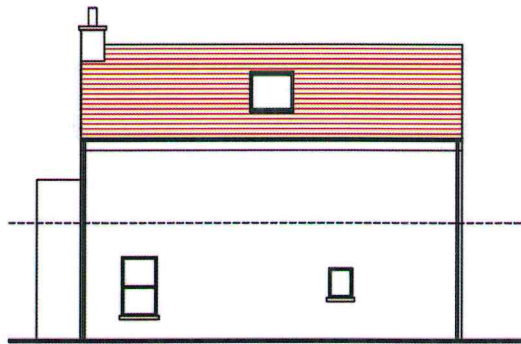


FIRST FLOOR

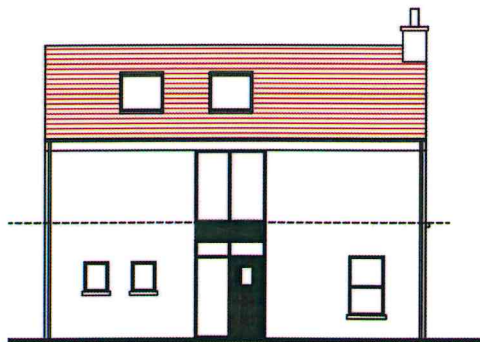
Cottage 1



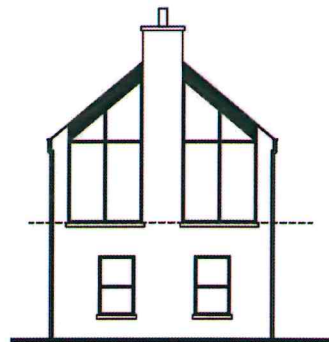
FRONT ELEVATION



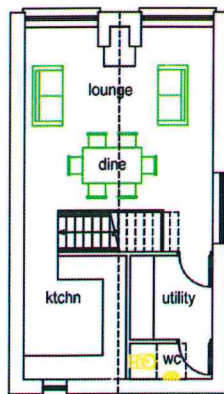
SIDE ELEVATION



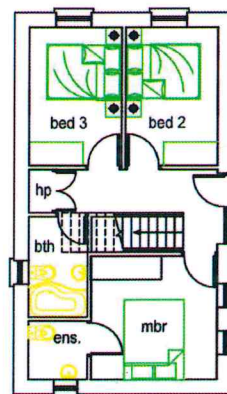
SIDE ELEVATION



REAR ELEVATION



FIRST FLOOR



GROUND FLOOR

Cottages 2, 3 & 4

