



House - Mid Terrace (EPC Rating: E)

**52 SLOAN STREET, LISBURN, BT27 5AG**

Per month

**£900 Per**



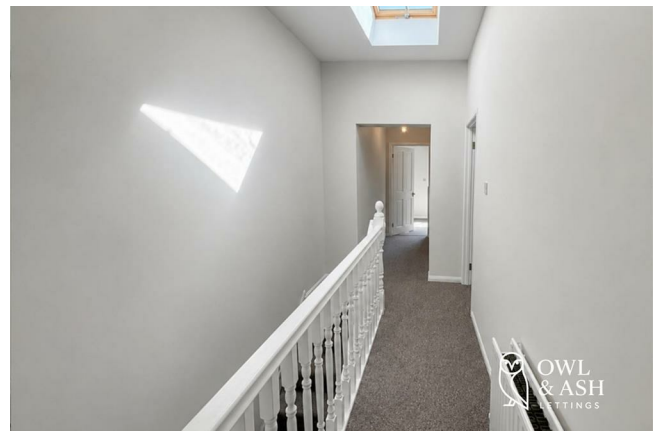
# 3 Bedroom House – Mid Terrace located in Lisburn

Owl & Ash Lettings are delighted to bring 52 Sloan Street, Lisburn, BT27 5AG, to the Belfast rental market.

Having recently undergone an extensive renovation, this beautifully presented three-bedroom home offers spacious, modern accommodation in one of Lisburn's most convenient and well-established residential locations, and is ready for immediate occupation!

The ground floor provides excellent living space, with a spacious lounge and separate dining area offering plenty of room for everyday family life. To the rear, the newly fitted kitchen has been finished to a high standard with contemporary units, quality worktops and integrated storage, providing a practical and attractive space for day-to-day living.

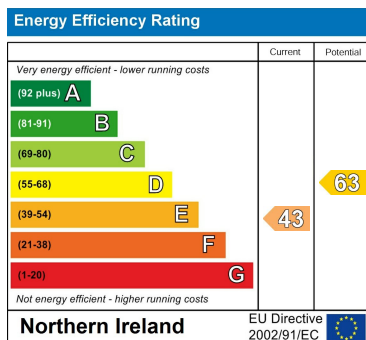
Upstairs, the property offers three well-proportioned bedrooms, each comfortably accommodating the needs of modern tenants, whether as family bedrooms, guest accommodation or a home office. The recently installed bathroom has also been finished to an excellent standard, featuring a contemporary suite with quality fittings and a clean, modern finish.



Council Tax Band

Northern Ireland

Energy Performance Graph



Call us on

[Eimear@owlandashlettings.com](mailto:Eimear@owlandashlettings.com)

[owlandashlettings.com](http://owlandashlettings.com)

Agents Note: Whilst every care has been taken to prepare these particulars, they are for guidance purposes only. All measurements are approximate and are for general guidance purposes only and whilst every care has been taken to ensure their accuracy, they should not be relied upon and potential buyers are advised to recheck the measurements.