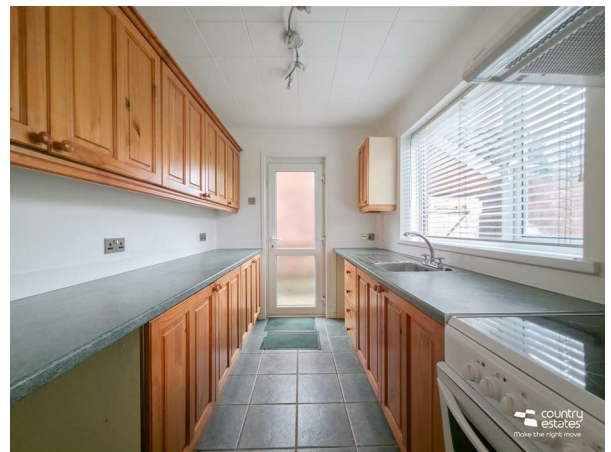


75 Carnmoney Road, Newtownabbey, BT36 6HT



- Semi-Detached Home
- Three Well Proportioned Bedrooms
- Spacious Open Plan Living/Dining Arrangement
- Galley Style Kitchen
- Modern First Floor Bathroom Suite
- Private Enclosed Garden to Rear
- Private Driveway Leading to Detached Garage
- PVC Double Glazing/Oil Fired Central Heating
- Highly Popular Convenient Location
- Chain Free

PRICE Offers Over £169,950

Positioned within a popular convenient residential location within walking distance to a host of local amenities to include shops, schools and public transport. This well presented 3 bedroom semi detached home enjoys a well planned living layout incorporating a spacious entrance hall, open plan living/dining room, and galley style kitchen. Externally the property further benefits from a private driveway to side, leading to detached garage and a private enclosed garden to rear. An early viewing is highly recommended.

>Sales >New Homes >Commercial >Rentals >Mortgages

Antrim
12 Church Street
BT41 4BA
Tel: (028) 9446 6777

Ballyclare
51 Main Street
BT39 9AA
Tel: (028) 9334 0726

Glengormley
9A Ballyclare Road
BT36 5EU
Tel: (028) 9083 0803

ACCOMMODATION

ENTRANCE HALL

PVC double glazed front door into spacious, reception style entrance hall (9'6" x 6'10"). Understairs storage.

OPEN PLAN LIVING/DINING ROOM

20'11" x 10'5" (6.4 x 3.2)

Attractive feature fireplace with wooden surround. Dual window aspect.

GALLEY STYLE KITCHEN

9'6" x 6'10" (2.9 x 2.1)

Equipped with a comprehensive range of high and low level fitted units and contrasting work surfaces and upstands. Single drainer stainless steel sink unit with swan neck mixer tap. Space for free standing oven with over head extractor fan. Plumbed for washing machine. Space for free standing under counter fridge. Tiled floor. PVC double glazed door to side.

FIRST FLOOR

Access to roof space.

BEDROOM 1

10'5" x 10'5" (3.19 x 3.18)

Built in Hot-press/storage cupboard.

BEDROOM 2

10'5" x 10'5" (3.18 x 3.18)

BEDROOM 3

9'8" x 7'1" (2.95 x 2.16)

MODERN BATHROOM SUITE

Comprising panel bath with fixed shower screen and electric shower unit over bath, pedestal wash hand basin and a button flush WC. Part tiled walls.

OUTSIDE

Neat well maintained lawn to front screened by mature shrubs. Paved driveway to side leading to matching detached garage.


Private enclosed garden to rear, laid in lawn and screened by perimeter fence.

MATCHING DETACHED GARAGE

19'0" x 9'8" (5.79m x 2.95m)

Equipped with power and light. Up and over door.

IMPORTANT NOTE TO ALL PURCHASERS: We have not tested any of the systems or appliances at this property.

Energy Efficiency Rating		
	Current	Potential
Very energy efficient - lower running costs		
(92 plus) A		
(81-91) B		
(69-80) C		
(55-68) D		
(39-54) E		
(21-38) F		
(1-20) G		
Not energy efficient - higher running costs		
Northern Ireland		EU Directive 2002/91/EC 



Country Estates (N.I.) Ltd. for themselves and the Vendors of this property whose agents are, give notice that:

These particulars do not constitute any part of an offer or contract

All statements contained in these particulars as to this property are made without responsibility on the part of Country Estates (N.I.) Ltd. or the vendor

None of the statements contained in these particulars as to this property are to be relied on as statements or representations of fact

Any intending purchaser must satisfy himself or otherwise as to the correctness of the statement contained in these particulars

The vendor does not make or give, and neither Country Estates (N.I.) Ltd. nor any person in their employment, has any authority to make or give representation or warranty whatever in relation to this property.