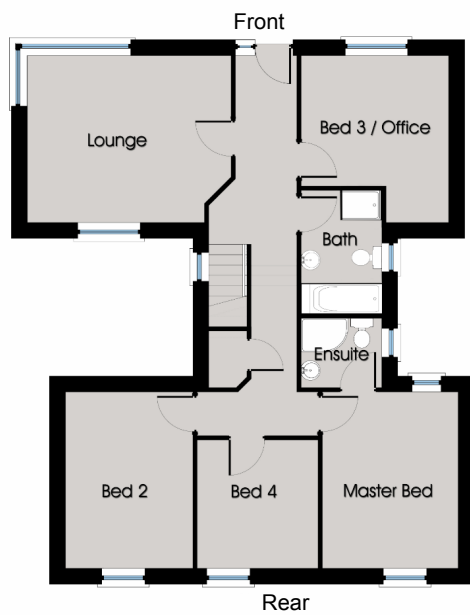


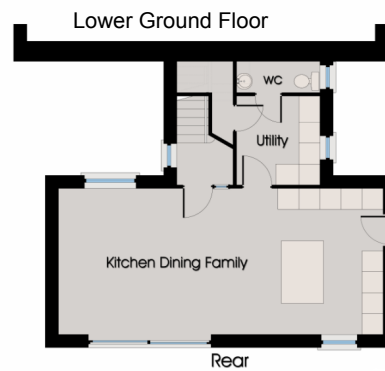


# THE FOXGLOVE

CIRCA 1580 SQ FT (146.7 SQ M)



NOTE - (Floor plans not to scale)



Lounge	4.81m x 3.96m	15'7 x 12'9
Bed 2	3.00m x 4.19m	9'8 x 13'7
Bed 3/Office	3.47m x 3.99m	11'3 x 13'0
Bed 4	2.86m x 3.05m	9'3 x 10'0
Master Bed	3.20m x 4.19m	10'4 x 13'7
Kitchen/Dining/ Family	9.26m x 4.19m	30'0 x 13'7
Utility	2.37m x 2.93m	7'7 x 9'6



25 Mandeville Street,  
Portadown BT62 3PB  
**Tel: 028 3835 0883**  
[www.stevensonandcumming.com](http://www.stevensonandcumming.com)  
[portadown@stevensonandcumming.com](mailto:portadown@stevensonandcumming.com)



23 Rathfriland Street,  
Banbridge BT32 3LA  
**Tel: 028 4062 4400**  
[www.wilson-residential.com](http://www.wilson-residential.com)  
[info@wilson-residential.com](mailto:info@wilson-residential.com)