

9261 2121  
stewartestateagents.com

**stewart**  
estate agents



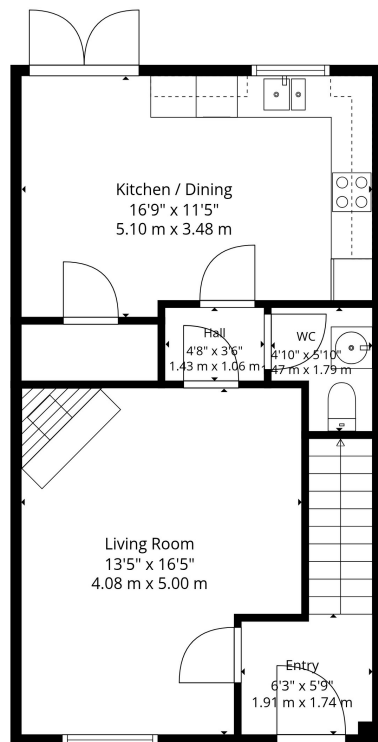
**10 GLEBE CRESCENT**

Moira BT67 0TR

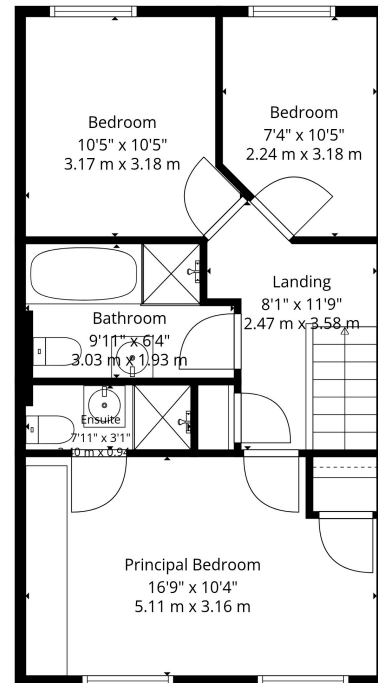
Offers around  
**£209,950**







1st Floor



2nd Floor

**TOTAL: 1048 sq. ft, 98 m2**  
 1st floor: 524 sq. ft, 49 m2, 2nd floor: 524 sq. ft, 49 m2  
 EXCLUDED AREAS: WALLS: 64 sq. ft, 6 m2

Sizes And Dimensions Are Approximate. Actual May Vary.

Score	Energy rating	Current	Potential
92+	A		
81-91	B		
69-80	C	72 C	78 C
55-68	D		
39-54	E		
21-38	F		
1-20	G		

## Description

This charming and very attractive town house forms part of an authentically styled Crescent, wonderfully positioned with the ever popular Glebe development, on the edge of Moira's historic Village with all amenities at hand including Moira Primary School, Rowandale Primary School as well as Moira's beautiful Demesne.

The property has a stunning interior for modern living including an elegant living room with a feature herring bone wood block floor and architectural arch window, open plan kitchen with a beautifully fitted Shaker style kitchen, spacious master bedroom with ensuite shower room and a very inviting rear garden for summer entertaining.

All in all, a stylish and homely town house in a convenient Village setting. Viewing a must!

## Features:-

- Elegant town house in an authentically styled Crescent
- Three bedrooms, master bedroom with an modern ensuite shower room
- Attractive double glazed front door leading into a hallway with stairs to the first floor accommodation
- Beautiful living room with a feature arch window and a stunning herringbone reclaimed wood block floor. Feature fireplace surround with an open fire inset
- Inner hallway leading to a downstairs cloak room with WC and wash hand basin
- Open plan kitchen with dining area including PVC double glazed double doors leading to the rear garden. Built in pantry or cloak room for storage
- Beautifully fitted kitchen with a generous range of high and low level cabinetry finished in a modern shaker style. Built in oven and inset hob. Integrated dish washer and an integrated fridge/freezer
- Bathroom on the first floor with a bath, WC and wash hand basin. Separate shower cubicle
- Neat gardens to the rear laid out in lawns with planted borders and paved patio area
- PVC double glazed windows
- Oil fired central heating



These particulars do not constitute any part of an offer or contract. None of the statements contained in these particulars are to be relied on as statements or representations of fact and intending purchasers must satisfy themselves by inspection or otherwise to the correctness of each of the statements contained in these particulars. The vendor does not make or give, and neither Stewart Estate Agents, nor any person in its employment has any authority to make or give, any representation or warranty whatever in relation to this property. Stewart Estate Agents has not tested any equipment, apparatus, fittings or services and cannot verify that these are in working order.