

9261 2121  
stewartestateagents.com

**stewart**  
estate agents

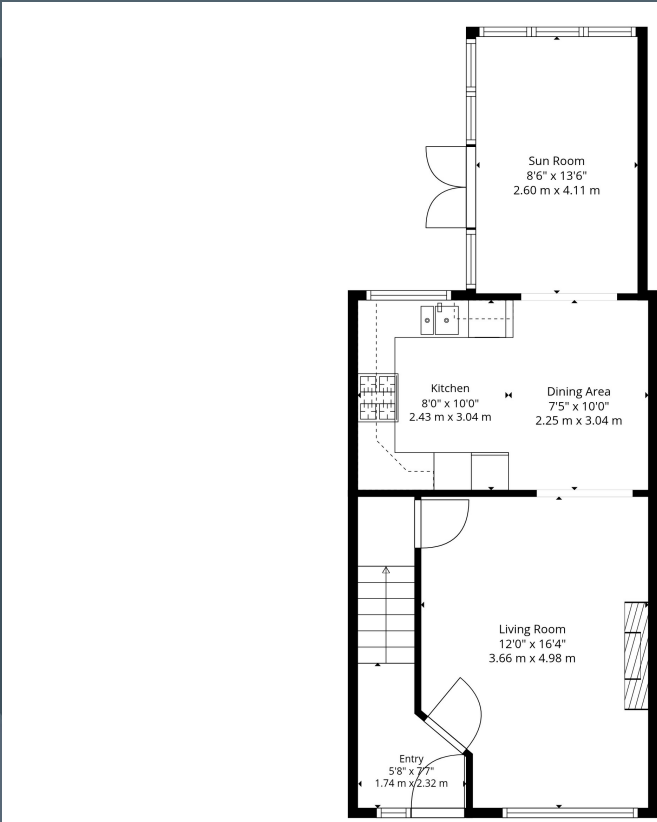


**30 ARINDALE**  
Maghaberry BT67 0SY

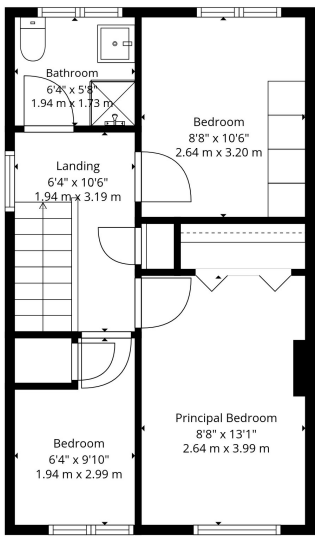
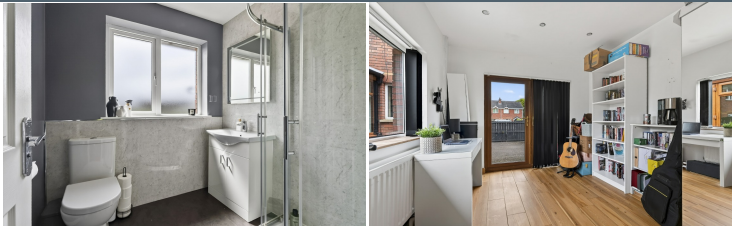
Offers around  
**£219,950**







1st Floor



2nd Floor

**TOTAL: 936 sq. ft, 87 m2**  
 1st floor: 527 sq. ft, 49 m2, 2nd floor: 409 sq. ft, 38 m2  
 EXCLUDED AREAS: WALLS: 79 sq. ft, 7 m2

Sizes And Dimensions Are Approximate. Actual May Vary.

Score	Energy rating	Current	Potential
92+	A		
81-91	B		
69-80	C		
55-68	D		65   D
39-54	E	49   E	
21-38	F		
1-20	G		

## Description

This stunning semi-detached home has had its full potential maximised, providing a wonderful open plan interior space for modern day living including a spacious and elegant living room leading through to the charming and beautifully fitted kitchen and open plan to a sun room at the rear.

The property is conveniently located within the growing village of Maghaberry with all its amenities and road networks and forms part of a highly residential and very attractive development of stylish homes.

A generous garden to the rear will provide one of the many selling features, having neat lawns and patio areas with a detached garage block presently used as a storage room or work space with PVC double glazed double doors at the front

Viewing a must!

Features:-

- Stunning semi-detached home with sun room at the rear
- Detached garage block presently used as a workspace space with a PVC double glazed double doors at the front. Heating and power
- Attractive composite front door leading into a bright hallway with stairs to the first floor accommodation
- Spacious living room with an antique style cast iron fireplace and slate hearth. Storage space under the stairs. Open plan to the kitchen. Feature wooden floor
- Attractive and very stylish kitchen with a generous range of fitted high and low level units including a built in oven and grill, inset 5 ring gas hob with an extractor fan above. Space for a dish washer. Space for a fridge/freezer open plan to the sun room. Feature tiled floor
- Stylish sun room with a cosy roof construction and PVC double glazed windows and doors leading to the rear garden. Attractive laminate wooden floor
- Three generous bedrooms, master bedroom with built in wardrobes
- Shower room having a modern white suite including a shower cubicle and shower fitment, vanity wash hand basin and WC
- PVC double glazed windows
- Oil fired central heating
- Generous asphalt driveway at the front
- Solar panels - privately owned



These particulars do not constitute any part of an offer or contract. None of the statements contained in these particulars are to be relied on as statements or representations of fact and intending purchasers must satisfy themselves by inspection or otherwise to the correctness of each of the statements contained in these particulars. The vendor does not make or give, and neither Stewart Estate Agents, nor any person in its employment has any authority to make or give, any representation or warranty whatever in relation to this property. Stewart Estate Agents has not tested any equipment, apparatus, fittings or services and cannot verify that these are in working order.

stewart estate agents | 34a Main Street, Moira. BT67 0LE

