

9261 2121
stewartestateagents.com

stewart
estate agents



124 HILLSBOROUGH ROAD

Dromore BT25

Offers around

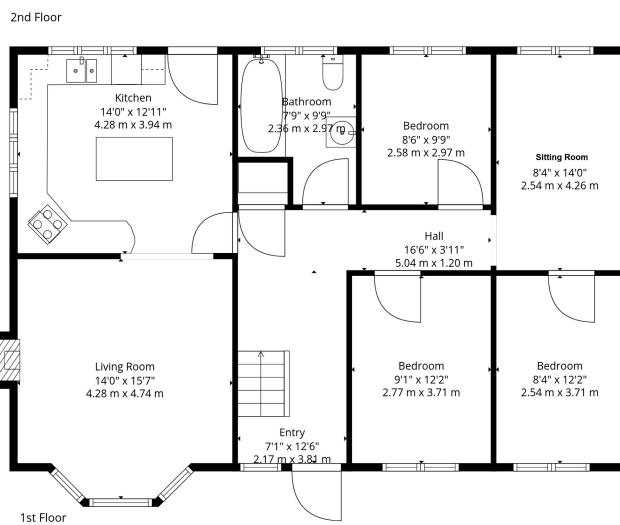
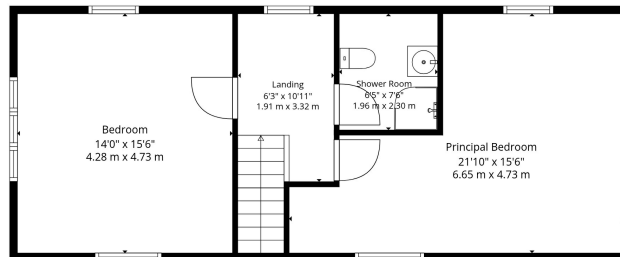
£329,950







Score	Energy rating	Current	Potential
92+	A		
81-91	B		82 B
69-80	C		
55-68	D	58 D	
39-54	E		
21-38	F		
1-20	G		



TOTAL: 1570 sq. ft, 146 m2
 1ST FLOOR: 1065 sq. ft, 99 m2, 2nd floor: 505 sq. ft, 47 m2
 EXCLUDED AREAS: FIREPLACE: 5 sq. ft, 0 m2, PRINCIPAL BEDROOM: 51 sq. ft, 4 m2, LOW CEILING: 49 sq. ft, 5 m2,
 LANDING: 8 sq. ft, 1 m2, WALLS: 123 sq. ft, 10 m2

Sizes And Dimensions Are Approximate. Actual May Vary.

Description

A very desirable detached country home enjoying a wonderful setting, having an attractive rural and leafy aspect with views extending to the Mourne Mountains, positioned just off the A1 commuter carriageway and convenient to Dromore Town Centre for local amenities as well as Dromore High School. The property has fantastic interior accommodation which is flexible for alternative layouts and providing an opportunity for a wide spectrum of potential purchasers including growing families in particular. A separate yard area with a detached workshop will immediately appeal to those seeking additional space to pursue an interested or hobby, well positioned just off the A1. All in all, a deceptively spacious chalet style country home in a commuter setting. Viewing a must

Features:-

- A very desirable detached chalet bungalow with detached garage, yard and workshop
- Flexible interior accommodation presently based on a 5 bedroom, 2 reception room format
- Bright and spacious hallway with a mahogany front door and an ash spindled staircase to the first floor accommodation
- Open plan living room with feature bay window, attractive fireplace and inset cast iron stove which has been dual linked to the heating
- Beautifully fitted kitchen with ample high and low level units in a contemporary shaker style with a corner built in oven with inset hob and a feature extractor fan above. Space for a dish washer. PVC double glazed rear door
- Bathroom on the ground floor with a bath, WC and wash hand basin
- Shower room on the first floor with a modern style shower, WC and wash hand basin. Skylight window
- PVC double glazed windows
- Oil fired central heating dual linked to the cast iron stove
- Spacious gardens laid out extensively in lawns. Attractive entrance with wooden gate and driveway leading up to the house
- Separate yard area with a detached workshop with roller garage door and a separate service door
- Detached garage with garage door and separate service door



These particulars do not constitute any part of an offer or contract. None of the statements contained in these particulars are to be relied on as statements or representations of fact and intending purchasers must satisfy themselves by inspection or otherwise to the correctness of each of the statements contained in these particulars. The vendor does not make or give, and neither Stewart Estate Agents, nor any person in its employment has any authority to make or give, any representation or warranty whatever in relation to this property. Stewart Estate Agents has not tested any equipment, apparatus, fittings or services and cannot verify that these are in working order.