



17 Cairndore Walk , Newtownards, BT23 8PE

"Ready for something completely different...? Welcome to 17 Cairndore Walk. A modern 3 storey, detached home with generous rear extension in a quiet cul de sac location." This is a "Wow" home! The property started life as a 3 bedroom detached with a conventional layout but has had a generous rear sun room added (over 21 feet long) and one of the best loft conversions I've seen which provides a master suite, with double bedroom and en-suite shower room, making the original 3rd bedroom into a really useful dressing room with storage. This leaves two double bedrooms on the first floor. The rest of the home hasn't been ignored either with a luxury family bathroom and a modern kitchen/diner. The lounge now includes a multi fuel stove and, to the side of the property, there is a timber shed which is insulated and offers a utility area plus separate home office. Lovely touches such as oak and oak glazed doors throughout the property plus high quality tiling and kitchen fixtures give this home a real touch of quality yet at a very attractive price. Externally there is a garden in lawn to the front, with mature shrubs, and a fully enclosed landscaped rear patio which is a wee sun trap. A must see home so give us a call and we'll arrange a personal viewing for you.

Offers Around £239,950

17 Cairndore Walk

, Newtownards, BT23 8PE



- Extended, 3 storey, detached home
- Generous sun room to rear with French doors to kitchen
- Wooden shed with utility area & home office
- Please see our website for full details
- 3 double bedrooms + dressing room - Master en-suite
- Lounge with multi fuel stove and French doors to kitchen
- uPVC double glazing & fascia - Phoenix gas central heating
- Luxury kitchen/diner
- Luxury bathroom with bath & separate shower
- Gardens front & rear in lawn with paved patio & tarmac driveway

Entrance

Porch

4'10x4 (1.47mx1.22m)

Entrance hall

Kitchen/diner

18'9x11'4 (5.72mx3.45m)

Sun room

21'5x11 (6.53mx3.35m)

Lounge

16'2x11'10 (4.93mx3.61m)

Landing

Bathroom

8'2x6'2 (2.49mx1.88m)

Bedroom 2

12'2x11'5 (3.71mx3.48m)

Bedroom 3

13'7x8'6 (4.14mx2.59m)

Dressing room

9'10x9'9 (3.00mx2.97m)

Landing

Bedroom 1

12'10x12'7 (3.91mx3.84m)

En-suite shower room

6'6x4'6 (1.98mx1.37m)

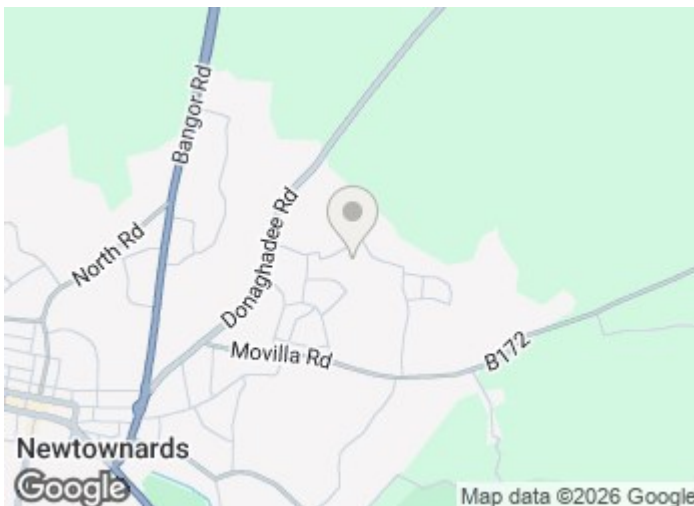
Wooden Shed

21x10'6 (6.40mx3.20m)

Outside

Tenure

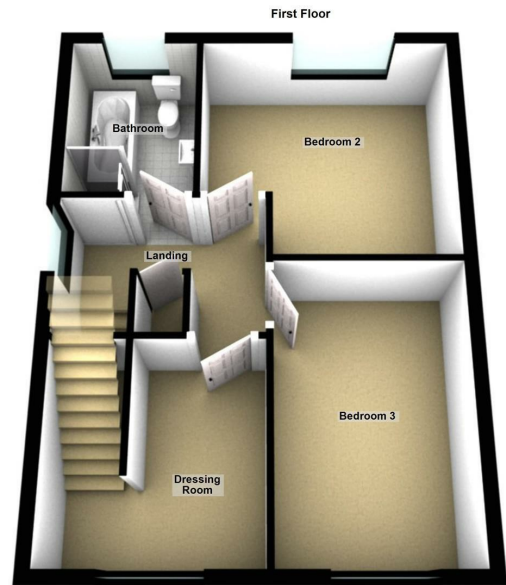
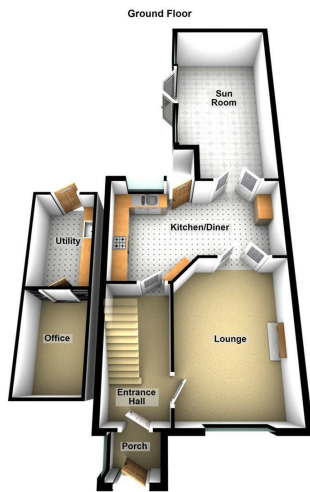
Property misdescriptions



Directions



Floor Plan



These particulars, whilst believed to be accurate are set out as a general outline only for guidance and do not constitute any part of an offer or contract. Intending purchasers should not rely on them as statements of representation of fact, but must satisfy themselves by inspection or otherwise as to their accuracy. No person in this firm's employment has the authority to make or give any representation or warranty in respect of the property.

