

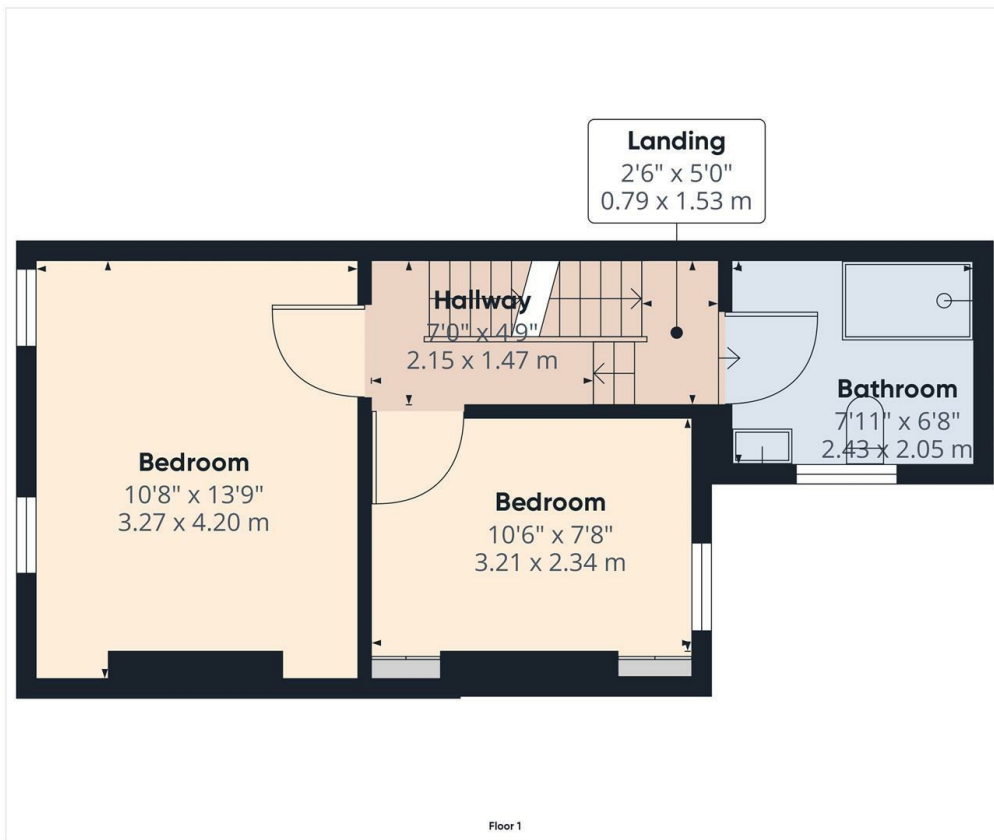


## Room 1, 46 Portmore Street, Portadown, Craigavon, County

£100 Per Week

- Room Available in Beautifully Presented House Share
- Single Occupancy per room
- Cleaning - A cleaner will attend bi-monthly - Cost included in Rent
- Situated in the heart of Portadown town centre
- Fully Furnished
- GFCH
- Property finished to an excellent standard throughout
- Superfast WIFI Throughout Property - Cost included in Rent

**Hannath**

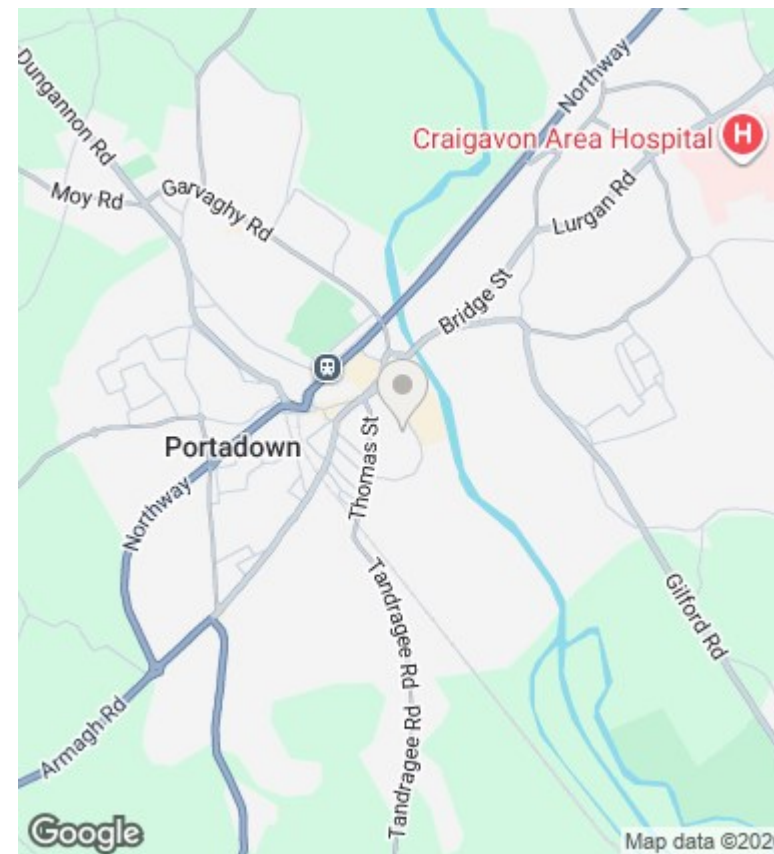


Approximate total area\*  
343.48 ft<sup>2</sup>  
31.91 m<sup>2</sup>

(\*) Excluding balconies and terraces

While every attempt has been made to ensure accuracy, all measurements are approximate, not to scale. This floor plan is for illustrative purposes only.

GIRAFFE360



## Directions

## Viewings

Viewings by arrangement only. Call 02838 399911 to make an appointment.

## Council Tax Band

Northern Ireland

## EPC Rating:

Energy Efficiency Rating		
	Current	Potential
<i>Very energy efficient - lower running costs</i>		
(92 plus) <b>A</b>		
(81-91) <b>B</b>		
(69-80) <b>C</b>		
(55-68) <b>D</b>		
(39-54) <b>E</b>		
(21-38) <b>F</b>		
(1-20) <b>G</b>		
<i>Not energy efficient - higher running costs</i>		
<b>Northern Ireland</b>	EU Directive 2002/91/EC	