

66 Carnbeg Green, Antrim, BT41 4RF



PRICE Offers Over £179,950

We are delighted to offer for sale this beautifully presented and deceptively spacious three bedroom semi-detached house and garage occupying a good position within the ever popular Carnbeg development on the outskirts of Antrim town yet close to all local amenities and transport facilities including Dunsilly Roundabout for easy access to Belfast and the Northwest. Finished to a high standard throughout, the property benefits from Country style kitchen units with integrated oven, hob and fridge freezer, dishwasher and washing machine together with modern ground floor W/C, and four piece family bathroom. Boasting three generous bedrooms to the first floor, a spacious rear garden and a detached garage with power and lighting this property should appeal to a wide range of prospective purchasers. Only on full internal inspection can one begin to appreciate the quality of this superb family home. Early viewing strongly recommended.

>Sales >New Homes >Commercial >Rentals >Mortgages

Antrim
12 Church Street
BT41 4BA
Tel: (028) 9446 6777

Ballyclare
51 Main Street
BT39 9AA
Tel: (028) 9334 0726

Glengormley
9A Ballyclare Road
BT36 5EU
Tel: (028) 9083 0803



FEATURES

- Entrance hall with Fully tiled floor / Staircase to first floor
- Living room 15'3" x 13'1" with feature electric fire
- Kitchen with informal dining and separate utility area with integrated washing machine and additional kitchen units
- Full range of integrated appliances to include oven / hob / fridge freezer / dishwasher
- First floor landing
- Three well proportioned bedrooms / Two with integrated storage
- Four piece modern white family bathroom to include a panel bath and separate enclosed shower
- Tarmac drive to side with space for two cars
- Detached garage 21'4" x 10'5" with power and lighting and integrated storage units
- PVC double glazed windows and external doors / PVC soffits and fascia boards

ACCOMMODATION

OUTSIDE FRONT

Tarmac drive with space for two cars. Neat lawn.

ENTRANCE HALL

PVC double glazed door leading to entrance hall with Fully tiled flooring. Staircase to first floor with moulded handrail. Recessed low voltage down lighting. Double radiator.

LOUNGE

15'3" x 13'1" (4.665 x 4.001)

Feature electric fireplace. Wood laminate flooring. Recessed low voltage down lighting. Television and broadband points. Double radiator.

REAR HALL

Recessed low voltage downlighting. Fully tiled flooring.

GROUND FLOOR WC

Modern white suite comprising a pedestal wash on basin with chrome 'Monobloc' mixer tap and feature tied splashback. A low flush push button WC. Extractor fan. Fully tiled floor. Gable window. Single radiator.

KITCHEN WITH INFORMAL DINING

16'7" x 13'2" (at max) (5.056 x 4.026 (at max))

Full range of cream country style high and low level kitchen units with contrasting work surfaces and splashback tiling. One and one quarter bowl, stainless steel sink unit with chrome mixer tap. Integrated appliances to include a four ring halogen hob, with stainless steel pyramid style overhead extractor fan and tiled splashback. A low level combination oven and grill. Fridge freezer and Dishwasher. Separate utility area with additional matching kitchen units and integrated washing machine. Fully tiled flooring. Recessed low voltage downlighting. Double radiator. PVC double glazed door to rear.

FIRST FLOOR LANDING

Linen cupboard with shelving and single radiator. Single radiator to landing.

BEDROOM 1

13'0" x 9'9" (3.979 x 2.978)

Integrated bedroom storage with sliding mirror doors. High level Television points and power sockets. Double radiator.

BEDROOM 2

13'2" x 9'9" (at max) (4.038 x 2.979 (at max))

Integrated bedroom storage with sliding mirror doors. Double radiator.

BEDROOM 3

9'9" x 8'1" (at max) (2.984 x 2.488 (at max))

Integrated bedroom storage over stairs bulkhead. Double radiator.

FAMILY BATHROOM

8'9" x 6'6" (2.684 x 2.006)

Modern white four piece suite comprising a jet panel bath with featured chrome mixer tap, shower attachment and tiled splashback. The corner enclosed quadrant shower with fully tiled splashback and partially glazed sliding doors. A 'Vanity' wash hand basin with chrome 'Monobloc' mixer tap and storage below with addition of floor to ceiling tiled splashback and LED backlit touch mirror above. A low flush push button WC. Fully tiled flooring. Extractor fan. Chrome towel radiator.

OUTSIDE REAR

A fully enclosed rear garden offering superb sun orientation with six foot timber, fencing and pedestrian gate to front. Paved patio. Neat lawn. Raised brick built flower bed. Outside tap and outside lighting.

GARAGE

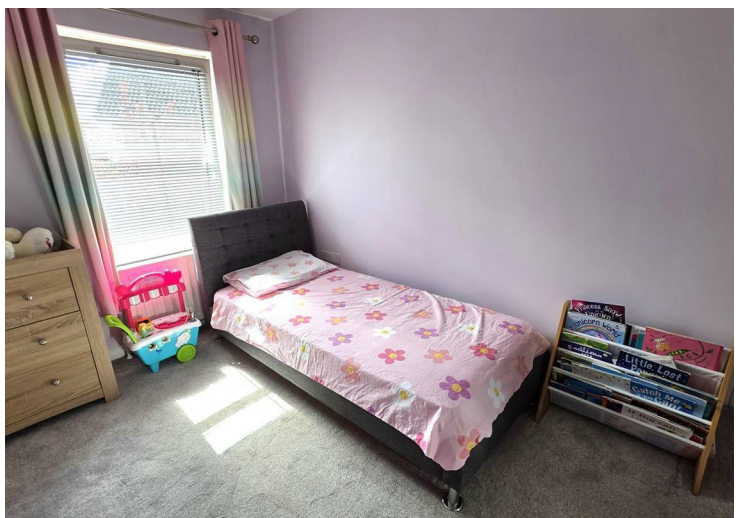
21'4" x 10'5" (6.520 x 3.185)

Power and lighting. Roller door. Integrated white contemporary style storage units. PVC double glazed service door to rear garden.

IMPORTANT NOTE TO ALL POTENTIAL PURCHASERS;

Please note, none of the services or appliances have been tested.

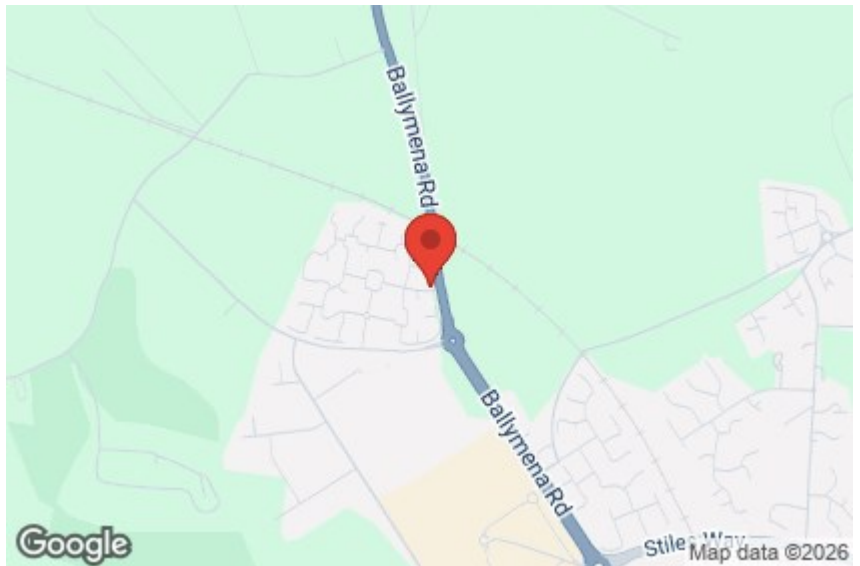
Please also be aware, property boundaries are an estimation and are to be confirmed via your solicitor.





Energy Efficiency Rating

	Current	Potential
<i>Very energy efficient - lower running costs</i>		
(92 plus) A		
(81-91) B		
(69-80) C		
(55-68) D		
(39-54) E		
(21-38) F		
(1-20) G		
<i>Not energy efficient - higher running costs</i>		
Northern Ireland	EU Directive 2002/91/EC	



Mortgage IQ

Talk to one of our advisers today

12 Church Street, Antrim, Co. Antrim, BT41 4BA
 T: 028 9417 0000
 E: antrim@mortgageIQ.co.uk

IQ
 WE KNOW WHAT IT TAKES

Country Estates (N.I) Ltd. for themselves and the Vendors of this property whose agents are, give notice that:

These particulars do not constitute any part of an offer or contract

All statements contained in these particulars as to this property are made without responsibility on the part of Country Estates (N.I) Ltd. or the vendor

None of the statements contained in these particulars as to this property are to be relied on as statements or representations of fact

Any intending purchaser must satisfy himself or otherwise as to the correctness of the statement contained in these particulars

The vendor does not make or give, and neither Country Estates (N.I) Ltd. nor any person in their employment, has any authority to make or give representation or warranty whatever in relation to this property.

PRS Property Redress Scheme