

87 Broom Park Okehampton EX20 1FT



Guide Price - £249,000



87 Broom Park, Okehampton, EX20 1FT.



A semi-detached family home situated within a modern development, with three bedrooms, an enclosed rear garden, off-road parking and an array of nearby local amenities...

- Semi-Detached Family Home
- Offering Three Bedrooms
- Contemporary Kitchen/Dining Room
- Family Bathroom & En-Suite
- Spacious Living Room
- Enclosed Rear Garden
- Off-Road Parking For Two Cars
- Close Proximity to Local Amenities
- Convenient Transport Links
- Street Parking Available
- Neutral Decor
- Council Tax Band - C
- EPC - C



Step into this beautifully presented semi-detached family home, where contemporary style meets everyday comfort in a highly convenient location. Offering generous living space, modern interiors, and a warm, welcoming atmosphere throughout, this impressive three-bedroom property is perfectly suited to growing families, professional couples, or anyone seeking a home that is ready to move straight into.

From the moment you arrive, the property makes an excellent first impression with off-road parking for two cars, additional street parking available, and attractive neutral décor that creates a bright and airy feel throughout the home. Inside, the spacious living room provides the perfect setting for relaxing evenings, entertaining guests, or enjoying quality family time. Large windows allow natural light to flood the space, enhancing the home's inviting atmosphere.

At the heart of the property is the stunning contemporary kitchen and dining room, thoughtfully designed to combine practicality with modern style. This impressive space offers ample storage and worktop space, making it ideal for busy family life as well as social occasions. The dining area provides plenty of room for family meals and entertaining"



Upstairs, the home continues to impress with three bedrooms, each tastefully decorated in neutral tones to suit a variety of styles and preferences. The principal bedroom benefits from its own en-suite shower room, offering added privacy and convenience, while the remaining bedrooms are served by a modern family bathroom finished to a high standard.

Outside, the enclosed rear garden offers a private and secure outdoor retreat, ideal for children to play, summer barbecues, or simply unwinding after a long day. Whether you enjoy gardening, entertaining, or peaceful outdoor living, this versatile space caters to every lifestyle.

Conveniently positioned close to a range of local amenities, schools, shops, and leisure facilities, the property also benefits from excellent transport links, making commuting and travel exceptionally easy.

Combining stylish interiors, practical living space, and a fantastic location, this superb home truly offers the best of modern family living.

Changing Lifestyles

Nestled on the northern edge of Dartmoor, Okehampton is a charming Devon market town that blends rural beauty with modern convenience. Often called the "Gateway to Dartmoor," it is surrounded by rugged moorland and rolling countryside, making it a haven for nature lovers and outdoor enthusiasts.

The town offers a vibrant community atmosphere and a wide range of amenities. Alongside independent shops, cosy cafés, and a historic market, Okehampton also has several supermarkets including a Waitrose. The recently reopened Okehampton railway station offers direct train services to Exeter, connecting residents and visitors to the wider region with ease.

Okehampton also has excellent local schools, a community hospital, and a strong sense of local pride. With easy access to Exeter and the A30, the town blends the tranquility of rural life with the convenience of city connections. For those seeking a balance between countryside charm and modern amenities, Okehampton offers an ideal lifestyle with the wild beauty of Dartmoor right on its doorstep.



Please do not hesitate to contact
the team at
Bond Oxborough Phillips
Sales & Lettings on
01837 500600
for more information or to
arrange an accompanied viewing
on this property.

Scan here for
our Virtual Tour:





Approximate total area⁽¹⁾

839 ft²

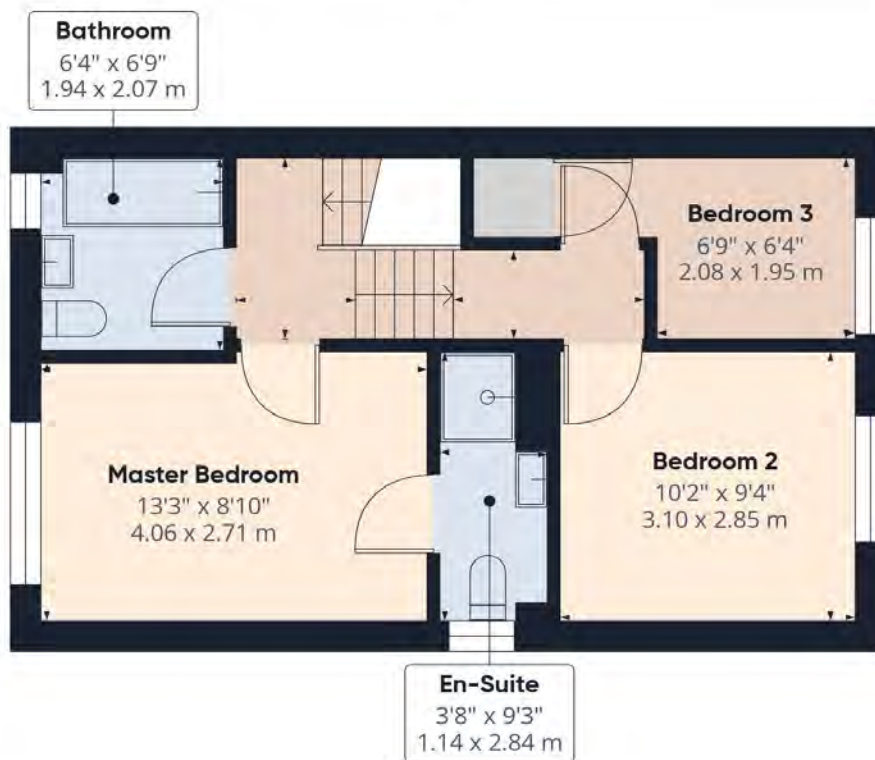
77.9 m²

Floor 0

Reduced headroom

4 ft²

0.4 m²



Floor 1

Have a property to sell or let?

If you are considering selling or letting your home, get in contact with us today on 01837 500600 to speak with one of our expert team who will be able to provide you with a free valuation of your home.

We have the facility to refer purchasers and vendors to conveyancing, mortgage advisors and Surveyors. It is your decision if you choose to deal with any of these companies however should you choose to use them we would receive a referral fee from them for recommending you. We will receive a referral fee between £50 - £300 depending on the company & individual circumstances. We have carefully selected these associates for the quality of their work and customer service levels.

Consumer Protection Regulations: We have not tested any apparatus, equipment, fixtures and fittings or services and so cannot verify that they are in working order or fit for the purpose. References to the Tenure of a Property are based on information supplied by the seller. We have not had sight of the Title Documents. A buyer is advised to obtain verification from their solicitor or surveyor. Floorplans shown are for guidance only and should not be relied upon. Items shown in photographs are NOT included unless specifically mentioned within these details. They may however be able by separate negotiation. You are advised to check the availability of this property before travelling any distance to view. Particulars are produced in good faith to the best of our knowledge and are set out as a general guide only.

PLEASE NOTE:

Before any sale is formally agreed, we have a legal obligation under the Money Laundering regulations and Terrorist Financing Act 2017 to obtain proof of your identity and of your address, take copies and retain on file for five years and will only be used for this purpose. We carry out this through a secure platform to protect your data. Each purchaser will be required to pay £29.99 upon an offer verbally being agreed to carry out these checks prior to the property being advertised as sale agreed.

Please let us know how we are doing;

