

## 29 Glenwell Gardens, Newtownabbey, BT36 7SZ



### PRICE Offers Over £289,950

*Positioned on an extensive mature private site within the highly regarded Collinbridge area just off the Antrim Road in Newtownabbey. This spacious detached chalet benefits from a flexible living layout incorporating three receptions, 4/5 bedrooms, ground floor and first floor four piece family bathroom suites. Externally the property further benefits from extensive gardens, a private driveway and attached garage. Priced to allow for modernisation this home will appeal to the buyer searching for a property in an enviable location with potential to create their forever home.*

> **Sales** > **New Homes** > **Commercial** > **Rentals** > **Mortgages**

**Antrim**  
12 Church Street  
Antrim  
BT41 4BA  
Tel: (028) 9446 6777

**Ballyclare**  
51 Main Street  
Ballyclare  
BT39 9AA  
Tel: (028) 9334 0726

**Glengormley**  
9A Ballyclare Road  
Glengormley  
BT36 5EU  
Tel: (028) 9083 0803

- **Impressive Detached Chalet Bungalow**
  - **Five Well Proportioned Bedrooms**
    - **Three Receptions**
  - **Open Plan Kitchen with Casual Dining Aspect**
  - **Ground Floor Four Piece Family Bathroom Suite**
  - **First Floor Four Piece Family Bathroom Suite**
- **Extensive Mature Site with Well Maintained Gardens**
  - **Large Private Driveway to Front**
  - **Attached Garage**
- **Highly Sought After Popular Location**



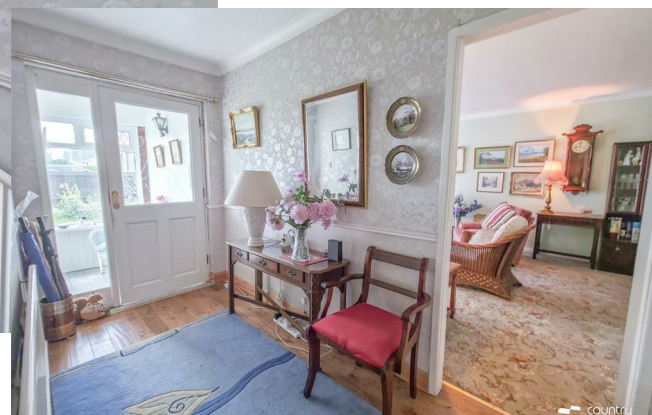
## ACCOMMODATION

### GROUND FLOOR

PVC double glazed front door with matching side screen into:

### ENTRANCE PORCH

Tiled floor. Glazed hardwood door into spacious well presented entrance hall with hardwood flooring.



### SPACIOUS LOUNGE 27'7" x 13'7"

(At widest Points). Feature fireplace with raised hearth. Picture style window to front. French doors into:

### FORMAL DINING ROOM/FAMILY ROOM 22'3" x 10'9"

Dual window aspect. Hardwood flooring. Cedar panelled ceiling.



## SUN LOUNGE 15'8" x 10'6"

Tiled flooring. PVC double glazed french door to rear patio. Pine Panelled ceiling.



## OPEN PLAN KITCHEN WITH CASUAL DINING ASPECT 19'8" x 14'9"

(At widest points). Equipped with a comprehensive range of high and low level fitted units and contrasting work surfaces. Double drainer stainless steel sink unit with mixer tap. Integrated eye-level twin oven, separate four ring electric hob, overhead extractor fan housed in stainless steel canopy. Plumbed for dishwasher. Space for free standing fridge freezer. Ample space for casual dining. Part tiled walls. Tiled floor. Pine panelled ceiling. Pantry cupboard. Glazed hard wood door to:



## REAR PORCH

Tiled floor. Plumbed for washing machine. PVC double glazed door to rear garden.

## BEDROOM 1 13'1" x 10'2"

Quality laminate flooring.

## BEDROOM 2 10'11" x 10'4"

Quality laminate flooring.

## BEDROOM 3 9'10" x 7'10"

Built in wardrobe.



## FAMILY BATHROOM SUITE

Four piece coloured suite comprising panel bath with shower over and glazed shower screen, tiled shower cubicle with electric shower unit, pedestal wash hand basin and a low flush WC. Tiled floor. Tiled walls.



## FIRST FLOOR

Landing with feature wood panelling.



### BEDROOM 4 13'5" x 9'11"

Wood panelled accent walls.

### BEDROOM 5 11'9" x 10'4"

Velux window. Wood panelled ceiling and walls.

### WALK IN DRESSER 7'10" x 3'11"

Built in slide robes.



## BATHROOM SUITE

Comprising double ended bath with telephone hand shower attachment, shower cubicle with electric shower unit, pedestal wash hand basin and a low flush WC. Tiled walls. Tiled floor. Wood panelled ceiling with velux window.



## OUTSIDE

Positioned on an extensive mature site.


Private 'Crazy-paving' driveway to front with ample space for a number of vehicles.

Neat well maintained mature gardens to front, side and rear, laid in lawn and stocked with a variety of trees and shrubs. Paved patio areas and walkways.

Garden sheds for storage.

Attached Garage.



Energy Efficiency Rating		
	Current	Potential
<i>Very energy efficient - lower running costs</i>		
(92 plus) <b>A</b>		
(81-91) <b>B</b>		
(69-80) <b>C</b>		
(55-68) <b>D</b>		<b>68</b>
(39-54) <b>E</b>	<b>41</b>	
(21-38) <b>F</b>		
(1-20) <b>G</b>		
<i>Not energy efficient - higher running costs</i>		
<b>Northern Ireland</b>	EU Directive 2002/91/EC	

**IMPORTANT NOTE TO ALL PURCHASERS:**  
**We have not tested any of the systems or appliances at this property.**

Country Estates (N.I.) Ltd. for themselves and the Vendors of this property whose agents are, give notice that:

These particulars do not constitute any part of an offer or contract

All statements contained in these particulars as to this property are made without responsibility on the part of Country Estates (N.I.) Ltd. or the vendor

None of the statements contained in these particulars as to this property are to be relied on as statements or representations of fact

Any intending purchaser must satisfy himself or otherwise as to the correctness of the statement contained in these particulars

The vendor does not make or give, and neither Country Estates (N.I.) Ltd. nor any person in their employment, has any authority to make or give representation or warranty whatever in relation to this property.