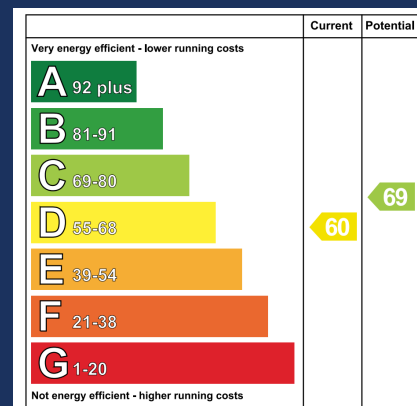


10 Massey Court
Belfast, BT4 3GJ

Asking Price
£580,000



- Large Bungalow on Elevate Site
- Quiet Cul De Sac off Massey Avenue
- 5 Double Bedrooms
- Master Bedroom with Luxury En Suite
- Fitted Dining Kitchen
- Utility Area
- Detached Double Garage
- Separate Dining Room with Snug area on Lower Split Level
- Grand Living Room with Dual Aspect and Open Fireplace
- Floored Loft Space with Drop Ladder
- Generous Parking Hardstand





Description

10 Massey Court, Belfast, BT4 3GJ

Description

A well-maintained family bungalow located in a quiet cul-de-sac, in a highly regarded and sought after area just off the picturesque tree-lined Massey Avenue, only a few minutes' walk from the Stormont Estate.

Situated on an elevated site within Massey Court, the property sees minimal traffic and is conveniently located within a two-mile radius of East Belfast's leading Primary, Secondary and Grammar schools. It is also close to the cafe and shopping hubs along Belmont Road and Ballyhackamore as well as local parks and sporting clubs.

The property is generous in proportion with 5 double bedrooms, 2 bathrooms including an ensuite to the oversized master bedroom, 3 reception rooms and a well-presented timber and granite kitchen. The oversized living room is bright, has an open fireplace and a very pleasant outlook.

Outside there is off street parking for multiple vehicles, with a tarmac driveway leading up to the detached double garage. The property features manicured gardens to the front and a mature raised terraced garden to the rear with a concrete paved perimeter.

The property has been held by the same





family for over 40 years, who have modernised it to include gas fired central heating and double glazing throughout. Originally built with 4 bedrooms, the property was extended to provide a fifth bedroom and ensuite.

Internal decoration is presented to a high standard with little to be done but move in and contemplate how to add your own personal touches.

Contact Stewart & Co. to arrange your personal, accompanied viewing today.



Accommodation

Entrance Hall

14'05" x 8'05" (4.41m x 2.58m) AWP

Recessed LED Ceiling Spots

Electrical Meter Cupboard

Living Room

16'03" x 19'09" (4.97m x 6.03m)

Dual Aspect Windows

Open Fire Place

Cornicing





Laminate Flooring

Downlighter

Dining Room

11'11" x 11'11" (3.64m x 3.64m)

Tiled Flooring

Downlighter

Snug/Family Room

11'03" x 10'06" (3.45m x 3.21m) AWP

Tiled Flooring

Aluminium Framed Double Glazed Sliding Doors

Vaulted Ceiling with Timber Tongue and Groove Finish

Directional Spot Downlighters

Kitchen

14'11" x 11'11" (4.56m x 3.63m)

Vinyl Tiled Flooring

Integrated Appliances

Recessed LED Downlighters

Double Bowl Sink with Drainer

Granite Worktop with Splashback

Access to Utility Room





Utility

5'03" x 7'10" (1.62m x 2.39m)

Tiled Flooring

Plumbed for Washing Machine

Gas Boiler

Access to Side Pathway



Bedroom One

11'11" x 11'09" (3.64m x 3.59m)

Built In Double Robe with Bi-Folding Doors

Laminate Flooring

Downlighters

Bedroom Two

10'01" x 11'11" (3.08m x 3.64m)

Built In Double Robe with Bi-Folding Doors

Laminate Flooring

Downlighters



Bedroom Three

9'11" x 12'00" (3.04m x 3.66m)

Carpet Flooring



Downlighters

Bedroom Four

9'07" x 14'01" (2.94m x 4.31m)

Laminate Flooring

Downlighters



Master Bedroom

18'08" x 16'04" (5.71m x 4.99m)

Laminate Flooring

Downlighters

Picture Window to Rear Garden

Access to En Suite

En Suite

7'11" x 6'11" (2.42m x 2.12m)

Fully Tiled Floor and Walls

Wall Mounted Sink with Storage

Long Base Shower Enclosure with Electric Shower

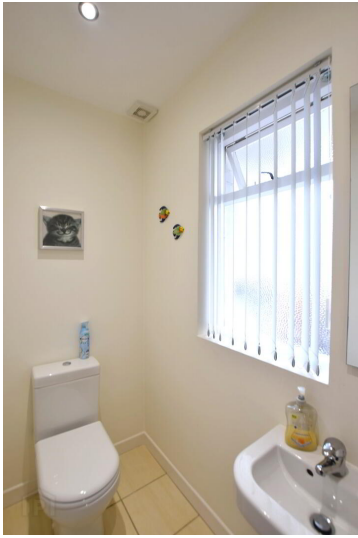
Centrally Heated Towel Rail

Low Flush WC

Recessed LED Downlighters

Mechanical Extraction





Bathroom

7'10" x 8'08" (2.40m x 2.64m)

Matching White Suite

Fully Tiled Floors & Walls

PVC Tongue & Groove Ceiling with Recessed LEDs

Mechanical Extraction

Wall Mounted Sink

White Suite including Bath, Low Flush WC & Quadrant Shower Cubicle

Electric Shower

Centrally Heated Towel Rail

Linen Cupboard

Separate WC

3'09" x 6'05" (1.15m x 1.97m)

Tiled Flooring

Wall Mounted Sink

Low Flush WC

Recessed LED Downlighters

Mechanical Extraction

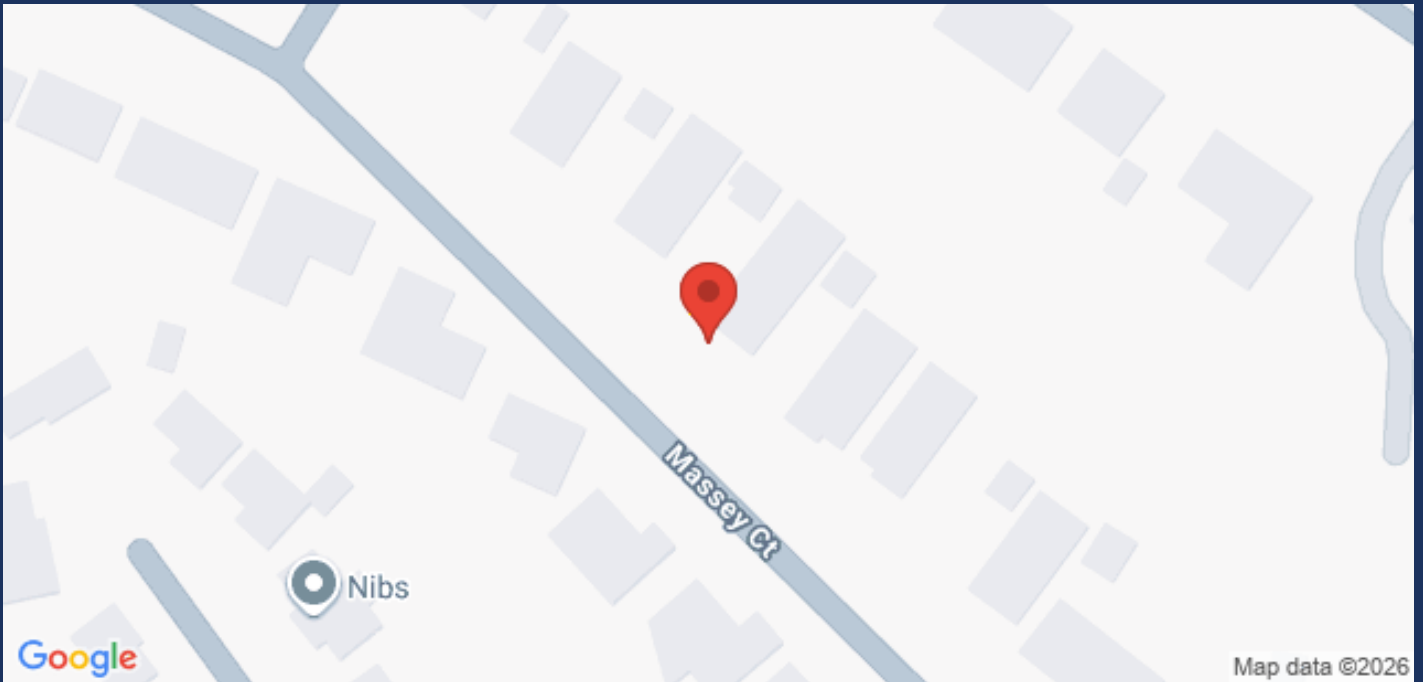
Detached Double Garage

17'00" x 18'00" (5.20m x 5.51m)



Additional Images





www.stewartbelfast.com

Your local property experts

We cover all aspects of property management and sales, within Belfast and beyond.

Free Valuations

Do you know the true value of your property?

Find out how much your house is really worth by speaking to a member of our staff about our FREE property valuations.

Sales Services

Find out what makes us stand out from the rest!

Property management is the operation, control, and oversight of real estate as used in its most broad terms.

[Visit our website for more information](http://www.stewartbelfast.com)

Brochure powered by PropertyPal.com

028 9065 1149 | stewartbelfast.com