



17 Orangefield Green , Belfast, BT5 6DT

Located right beside Orangefield Park yet within easy access of the City Centre - an incentive to get out the bicycle and take the Greenway or lace up the running shoes and get involved with the Park Run perhaps, this is a property that needs to be viewed to be appreciated.

It is presented to a lovely standard throughout and offers 3 bedrooms (which benefit from the additional space above the underpas), plus an attic store room with fixed staircase, a modern bathroom, a lounge and a modern kitchen/diner. The property benefits from uPVC double glazing & fascia and Phoenix gas central heating whilst, externally, there are pleasant and spacious gardens in lawn to front, side and enclosed to the rear - ideal perhaps for those with young children. The rear garden is south facing, making the most of any sunny days and, despite being so close to Belfast City, the sound of birdsong and nature here are something to experience for yourself.

This is a must see home for any aspiring home owner so call us today to secure an internal viewing and avoid the disappointment of missing out.

Offers Over £189,950

17 Orangefield Green

, Belfast, BT5 6DT



- Spacious semi detached/End terrace home
- Modern Kitchen/diner
- uPVC double glazing - Gas fired central heating
- Please see our website for full details
- 3 well proportioned bedrooms
- Modern family bathroom
- Generous gardens to front, side and south facing to rear
- Lounge
- Attic storage with velux window and radiator
- Great location right beside Orangefield Park

Entrance

Entrance Hall

Lounge

12'10x12'6 (3.91mx3.81m)

Kitchen/Diner

15'9x10'9 (4.80mx3.28m)

First Floor Landing

Bathroom

6'4x5'6 (1.93mx1.68m)

Bedroom 1

11'1x11 (3.38mx3.35m)

Bedroom 2

11x10'10 (3.35mx3.30m)

Bedroom 3

8x9'5 (2.44mx2.87m)

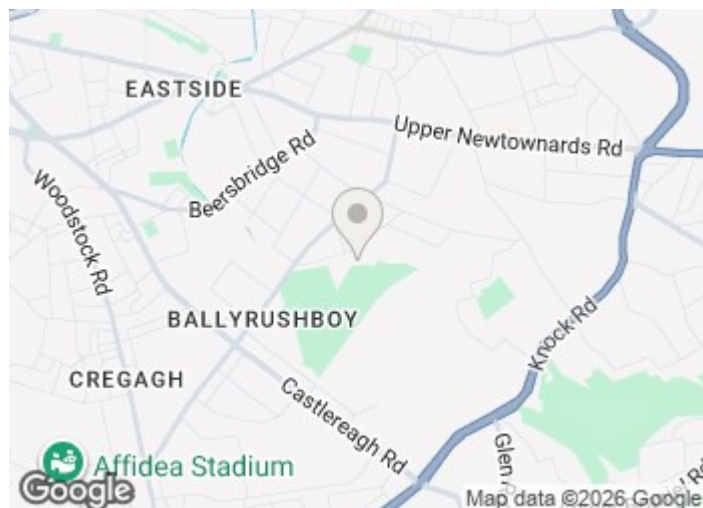
Attic Store Room

17'6x11 (5.33mx3.35m)

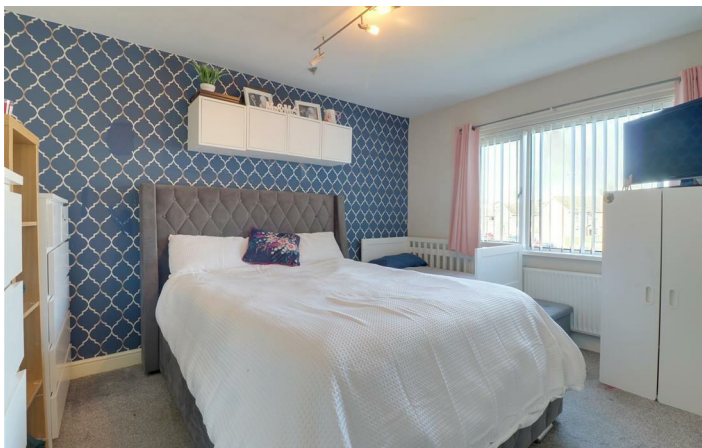
Outside

Tenure

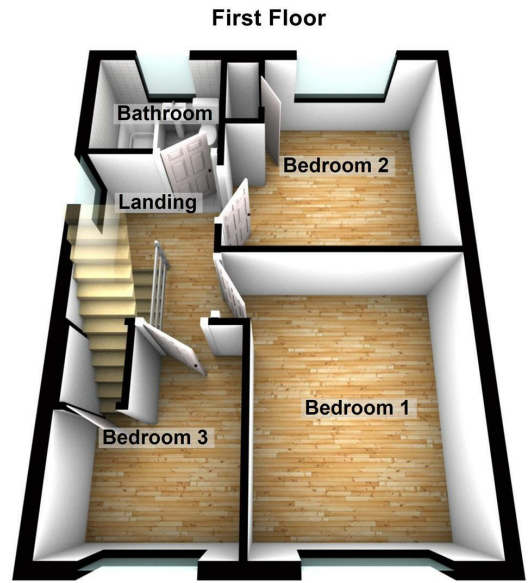
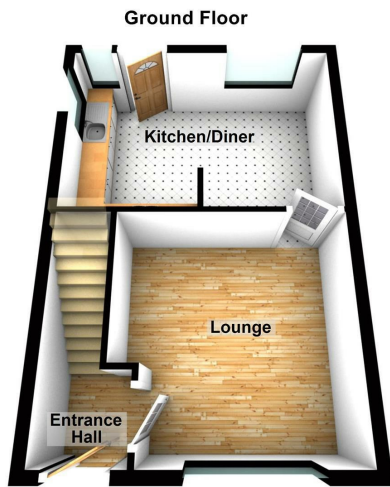
Property misdescriptions



Directions



Floor Plan



These particulars, whilst believed to be accurate are set out as a general outline only for guidance and do not constitute any part of an offer or contract. Intending purchasers should not rely on them as statements of representation of fact, but must satisfy themselves by inspection or otherwise as to their accuracy. No person in this firm's employment has the authority to make or give any representation or warranty in respect of the property.

