



Bond
Oxborough
Phillips

Changing Lifestyles

7 Wheelwright Court
Walkhampton
PL20 6LA

Guide Price £235,000



Changing Lifestyles

01822 600700
Tavistock@boproperty.com

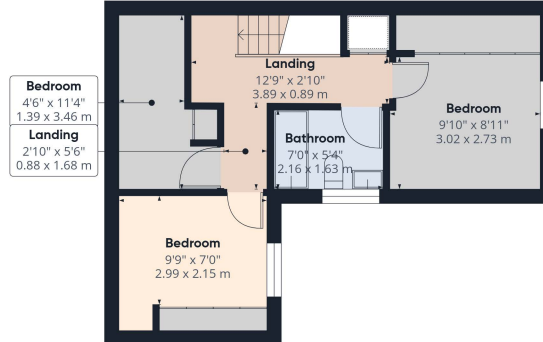
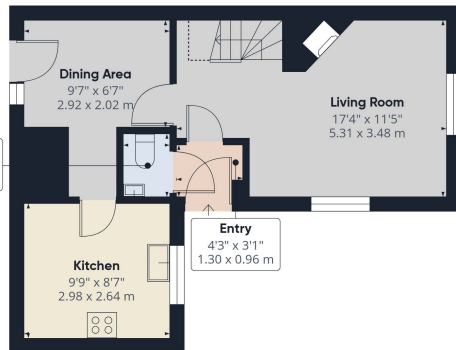
Tucked away from the main thoroughfare, this charming Dartmoor village retreat enjoys a peaceful position with uninterrupted views across open meadowland. The property benefits from a generously sized single garage providing off-road parking, a valuable asset in such a central village location.

The three-bedroom terraced home forms part of an exclusive mews of private residences, set behind a rare and listed former wheelwright's mill. Residents share beautifully maintained gardens, creating a secluded and tranquil environment at the very heart of the village.

The house has been thoughtfully upgraded to enhance comfort and efficiency, featuring a multi-fuel stove suitable for both wood and coal, newly installed thermostatically controlled electric heating, and updated lighting throughout the interior and exterior. Further improvements include a power shower, replacement immersion heater, and a fresh decorative scheme across the entire property.

There is a monthly charge of £25 to pay for the maintenance of the communal areas and cutting of the grass.

Changing Lifestyles



We have the facility to refer purchasers and vendors to conveyancing, mortgage advisors and Surveyors. It is your decision if you choose to deal with any of these companies however should you choose to use them we would receive a referral fee from them for recommending you. We will receive a referral fee between £50 - £300 depending on the company & individual circumstances. We have carefully selected these associates for the quality of their work and customer service levels.

Consumer Protection Regulations: We have not tested any apparatus, equipment, fixtures and fittings or services and so cannot verify that they are in working order or fit for the purpose. References to the Tenure of a Property are based on information supplied by the seller. We have not had sight of the Title Documents. A buyer is advised to obtain verification from their solicitor or surveyor. Floorplans shown are for guidance only and should not be relied upon. Items shown in photographs are NOT included unless specifically mentioned within these details. They may however be able by separate negotiation. You are advised to check the availability of this property before travelling any distance to view. Particulars are produced in good faith to the best of our knowledge and are set out as a general guide only.