



Bond
Oxborough
Phillips

Changing Lifestyles

31 Webbers Meadow
Woodbury
Exeter
Devon
EX5 1FH

Asking Price: £399,950 Freehold



Changing Lifestyles

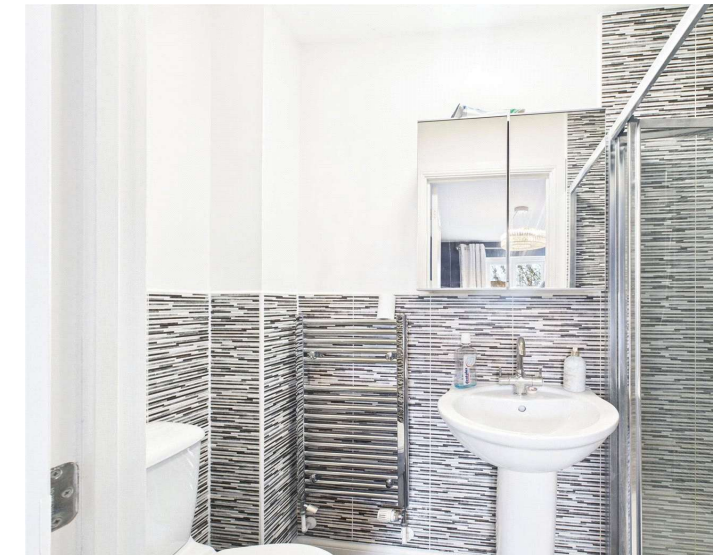
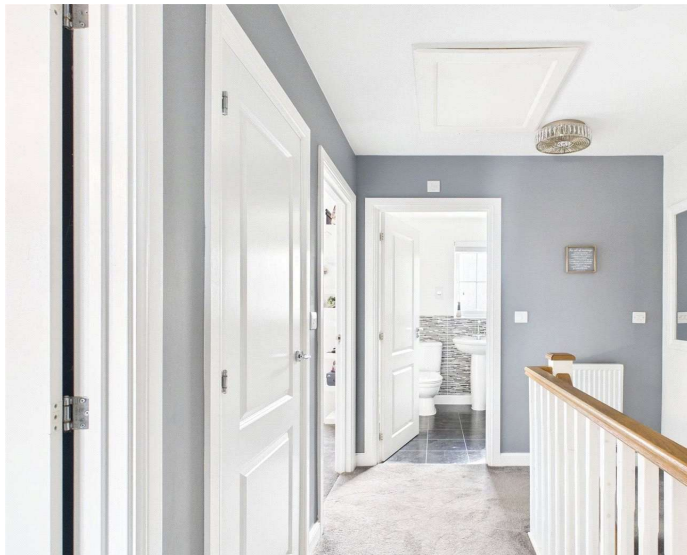
01822 600700
tavistock@boproperty.com

31 Webbers Meadow, Woodbury, Exeter, Devon, EX5 1FH

Beautifully Presented 3-Bedroom Semi-Detached Home in Sought-After Woodbury Village



- Three bedrooms, including ensuite master
- Bright and modern interiors throughout
- Enclosed rear garden
- Driveway parking and adjoining garage
- Sought-after village location in Woodbury
- EPC - B



Changing Lifestyles

01822 600700
tavistock@boproperty.com

Property Description

Nestled within a quiet cul-de-sac in the highly desirable village of Woodbury, this immaculately presented three-bedroom semi-detached home in Webbers Meadow offers an exceptional blend of modern living and village charm.

Finished to a high standard throughout, the property boasts a spacious and thoughtfully designed interior, ideal for both family life and entertaining. At the heart of the home is a stylish contemporary kitchen/dining room, providing the perfect space for social gatherings and everyday living. The bright and welcoming living room benefits from direct access to the enclosed rear garden, creating a seamless indoor-outdoor flow.

Upstairs, the property continues to impress with three well-proportioned bedrooms, including a superb principal bedroom complete with a private ensuite shower room. A modern family bathroom serves the remaining bedrooms.

Externally, the home features a secure and low-maintenance rear garden—ideal for relaxing or alfresco dining—along with the added convenience of an adjoining garage and private driveway parking.

Ideally positioned within easy reach of Woodbury's local amenities, picturesque countryside walks, and excellent transport links, this turnkey home offers the perfect opportunity for buyers seeking both comfort and convenience in a charming village setting.





Woodbury is one of East Devon's most desirable villages, offering a true sense of community and a relaxed pace of life, all while being just a short drive from Exeter and the stunning Jurassic Coast. Surrounded by rolling countryside, it's an ideal setting for those who love the outdoors, with nearby Woodbury Common providing miles of scenic walking and cycling trails through unspoiled heathland.

The village itself is full of character and charm, with a mix of historic buildings, cosy pubs, a well-regarded primary school, and a range of local amenities including a post office and village stores. Woodbury strikes the perfect balance between rural living and modern convenience—making it a popular choice for families, professionals, and retirees alike.

Service Charge - There is a monthly fee of circa £16 per month to cover the costs of the upkeep for the residential development.

Interested Party - The vendor of this property is related to a member of staff at Bond Oxborough Phillips

Under the provisions of the Estate Agents Act 1979, we hereby disclose that the owner of this property is an employee/associate of Bond Oxborough Phillips. This declaration is made in accordance with Section 21 of the Estate Agents Act 1979, which requires estate agents to disclose any personal interest in a property transaction.

Have a property to sell or let?

If you are considering selling or letting your home, please contact us today on 01822 600700 to speak with one of our expert team who will be able to provide you with a free valuation of your home.

We have the facility to refer purchasers and vendors to conveyancing, mortgage advisors and Surveyors. It is your decision if you choose to deal with any of these companies however should you choose to use them we would receive a referral fee from them for recommending you. We will receive a referral fee between £50 - £300 depending on the company & individual circumstances. We have carefully selected these associates for the quality of their work and customer service levels.

Consumer Protection Regulations: We have not tested any apparatus, equipment, fixtures and fittings or services and so cannot verify that they are in working order or fit for the purpose. References to the Tenure of a Property are based on information supplied by the seller. We have not had sight of the Title Documents. A buyer is advised to obtain verification from their solicitor or surveyor. Floorplans shown are for guidance only and should not be relied upon. Items shown in photographs are NOT included unless specifically mentioned within these details. They may however be able by separate negotiation. You are advised to check the availability of this property before travelling any distance to view. Particulars are produced in good faith to the best of our knowledge and are set out as a general guide only.

