

North Barwick
Iddesleigh
EX19 8BW



Guide Price - £950,000



North Barwick, Iddesleigh, EX19 8BW.



Charming Devon Longhouse with Detached One-Bedroom Cottage and Grounds Approaching Two Acres – Idyllic Setting in the Heart of Iddesleigh..

- Beautiful Devon Longhouse
- Charming Iddesleigh Location
- Detached One Bedroom Cottage
- Stunning Grounds Just Under Two Acres
- Long Private Driveway
- Spacious Living Room With Fireplace
- Bright Kitchen And Dining Room
- Three Generous Bedrooms
- Master Bedroom With Ensuite
- Additional Office And Laundry Room
- Character And Comfort Throughout
- Council Tax Band - F
- EPC - E



Tucked away on the peaceful outskirts of the picturesque village of Iddesleigh, this exceptional property offers a rare opportunity to acquire a beautifully presented three/four bedroom Devon longhouse together with a superbly converted one-bedroom cottage and a further detached office and further cottage. The home sits proudly within its own grounds of just under two acres, enjoying far-reaching views, a sweeping private driveway, and a wonderful sense of peace and privacy – all within one of Devon's most sought-after rural communities.

From the moment you approach along the impressive private driveway, the property exudes charm and character. The longhouse has been thoughtfully updated to blend traditional charm with modern comfort. The spacious living room features a large inglenook fireplace and wood-burning stove – the perfect space to relax and unwind. The adjoining dining room offers plenty of room for entertaining and flows seamlessly into a bright kitchen/breakfast room, fitted with an extensive range of units and enjoying direct access to the garden. To the rear, a delightful garden room/summer room provides a tranquil spot to enjoy the views and natural light, with French doors opening to the terrace and garden beyond.

Upstairs, the property continues to impress with three generous double bedrooms, each with its own charm and character. The principal bedroom benefits from an ensuite shower room, while the two further bedrooms are served by a spacious family bathroom and a separate WC. Throughout, the home has been maintained and decorated to an excellent standard, with a focus on comfort and practicality.

Beyond the main house, the detached one-bedroom cottage presents an exceptional opportunity for multi-generational living, a holiday let, or potential income from a rental business. The cottage features an open-plan living room with kitchen area, a modern shower room, and a bedroom upstairs, providing comfortable and flexible accommodation. The property also includes a further detached building, currently arranged as an office, bathroom, and laundry room – ideal for home working or potential conversion to further living space (subject to any necessary consents).

The grounds are a true highlight, extending to just under two acres and offering a superb mix of formal gardens, mature trees, and open space. There is plenty of room for children to play, space for animals, or the potential to create a small paddock or hobby garden. The long driveway provides ample parking for several vehicles and enhances the sense of seclusion and space.

Situated in the charming and highly desirable village of Iddesleigh, the property enjoys peace and tranquility while remaining convenient for access to Okehampton, Chulmleigh, and beyond. The village itself is steeped in heritage, with a welcoming community, a popular pub, and access to stunning countryside walks right on the doorstep.

This is a truly special home that combines character, flexibility, and rural charm in one of Devon's most sought-after settings.



Changing Lifestyles

Iddesleigh is a charming village known for its rich history, featuring the renowned Duke of York pub and a stunning 15th-century church. The village is also located along the famous Tarka Trail, a scenic route that stretches from the North Devon coast to the South Devon coast.

The larger village of Winkleigh, approximately 3 miles away, offers a range of shops, pubs, and amenities, while Dolton is home to a shop, three pubs, and a village school. Hatherleigh, the nearest town, provides a variety of local amenities, including a farmers' market, shops, and a supermarket. Okehampton, just a 15-minute drive away, offers a wider selection of services, including Waitrose and Lidl supermarkets. The surrounding North Devon countryside, including Dartmoor, Exmoor, and the dramatic coastline, is all within easy reach, offering plenty of opportunities for outdoor activities and exploration.



Please do not hesitate to contact the team at Bond Oxborough Phillips Sales & Lettings on **01837 500600** for more information or to arrange an accompanied viewing on this property.

Scan here for our Virtual Tour:





Approximate total area⁽¹⁾

2011 ft²
186.8 m²

Floor 0 Building 1



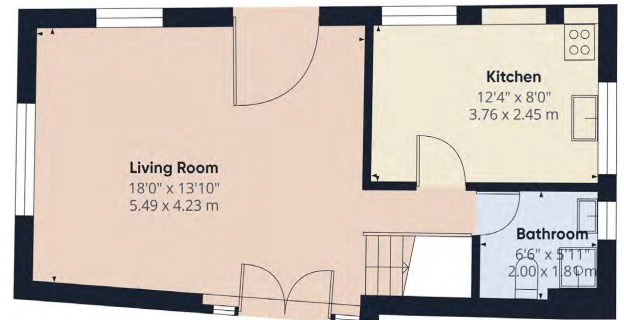
Floor 1 Building 1

Approximate total area⁽¹⁾

603 ft²
56 m²

Reduced headroom

6 ft²
0.6 m²



Floor 0 Building 2



Floor 1 Building 2

Have a property to sell or let?

If you are considering selling or letting your home, get in contact with us today on 01837 500600 to speak with one of our expert team who will be able to provide you with a free valuation of your home.

We have the facility to refer purchasers and vendors to conveyancing, mortgage advisors and Surveyors. It is your decision if you choose to deal with any of these companies however should you choose to use them we would receive a referral fee from them for recommending you. We will receive a referral fee between £50 - £300 depending on the company & individual circumstances. We have carefully selected these associates for the quality of their work and customer service levels.

Consumer Protection Regulations: We have not tested any apparatus, equipment, fixtures and fittings or services and so cannot verify that they are in working order or fit for the purpose. References to the Tenure of a Property are based on information supplied by the seller. We have not had sight of the Title Documents. A buyer is advised to obtain verification from their solicitor or surveyor. Floorplans shown are for guidance only and should not be relied upon. Items shown in photographs are NOT included unless specifically mentioned within these details. They may however be able by separate negotiation. You are advised to check the availability of this property before travelling any distance to view. Particulars are produced in good faith to the best of our knowledge and are set out as a general guide only.

PLEASE NOTE:

Before any sale is formally agreed, we have a legal obligation under the Money Laundering regulations and Terrorist Financing Act 2017 to obtain proof of your identity and of your address, take copies and retain on file for five years and will only be used for this purpose. We carry out this through a secure platform to protect your data. Each purchaser will be required to pay £29.99 upon an offer verbally being agreed to carry out these checks prior to the property being advertised as sale agreed.