



# 69 Woodvale

, Dromara, BT25 2JB

£239,950

Nestled in the charming village of Woodvale, Dromara, this delightful detached chalet bungalow offers a perfect blend of comfort and modern living. Spanning an impressive 1,475 square feet, the property boasts four well-appointed bedrooms, each designed to provide a serene retreat for the family. The two upstairs bedrooms feature en-suite bathrooms, ensuring privacy and convenience for all.

As you enter, you are welcomed into a spacious and bright family living room, complete with a feature fireplace that adds a touch of warmth and character to the home. The large kitchen and dining area is perfect for family gatherings and entertaining guests, providing ample space for culinary creations and shared meals.

The property is further enhanced by a good-sized rear enclosed garden, which features a lovely patio area ideal for outdoor dining and relaxation, a delightful spot for enjoying summer evenings with friends and family. Additionally, a detached garage provides practical storage solutions or potential for a workshop.

This chalet bungalow is not just a house; it is a family home that promises comfort, style, and a welcoming atmosphere. With its thoughtful layout and desirable location, it is an excellent opportunity for those seeking a peaceful yet vibrant community. Do not miss the chance to make this wonderful property your own.

## Viewing

Please contact our Cairns and Downing Office on 02896 223 011 if you wish to arrange a viewing appointment for this property or require further information.

- Fantastic detached family home
- 4 well proportioned bedrooms (2 downstairs) including 2 with en-suites (upstairs)
- Large family living room with feature fireplace and log burning stove
- Bright & airy modern kitchen & dining space
- Good size tiled family bathroom
- Excellent outside space including rear enclosed garden & patio
- Large driveway leading into a detached garage
- Oil fired central heating and UPVC double glazing throughout
- Excellent area for kids with great schools near by
- Book viewings now by calling Cairns & Downing on 02896223011



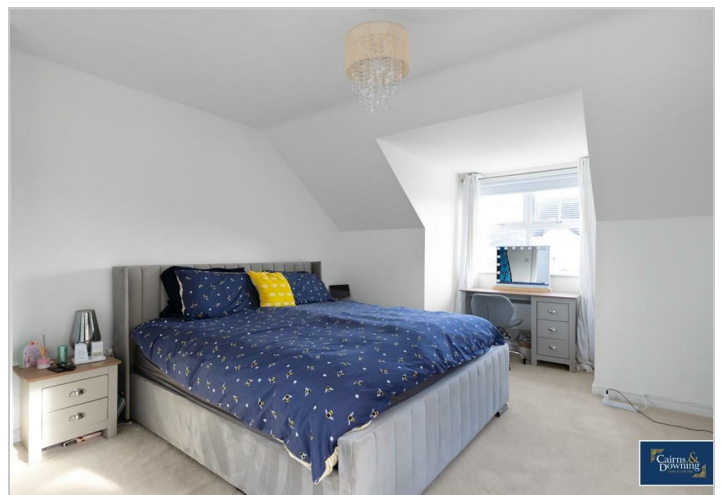
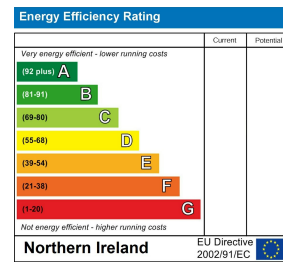
# Floor Plan



# Area Map



# Energy Efficiency Graph



These particulars, whilst believed to be accurate are set out as a general outline only for guidance and do not constitute any part of an offer or contract. Intending purchasers should not rely on them as statements of representation of fact, but must satisfy themselves by inspection or otherwise as to their accuracy. No person in this firm's employment has the authority to make or give any representation or warranty in respect of the property.