



32 Corcrain Drive, Portadown, Craigavon, County Armagh, BT62

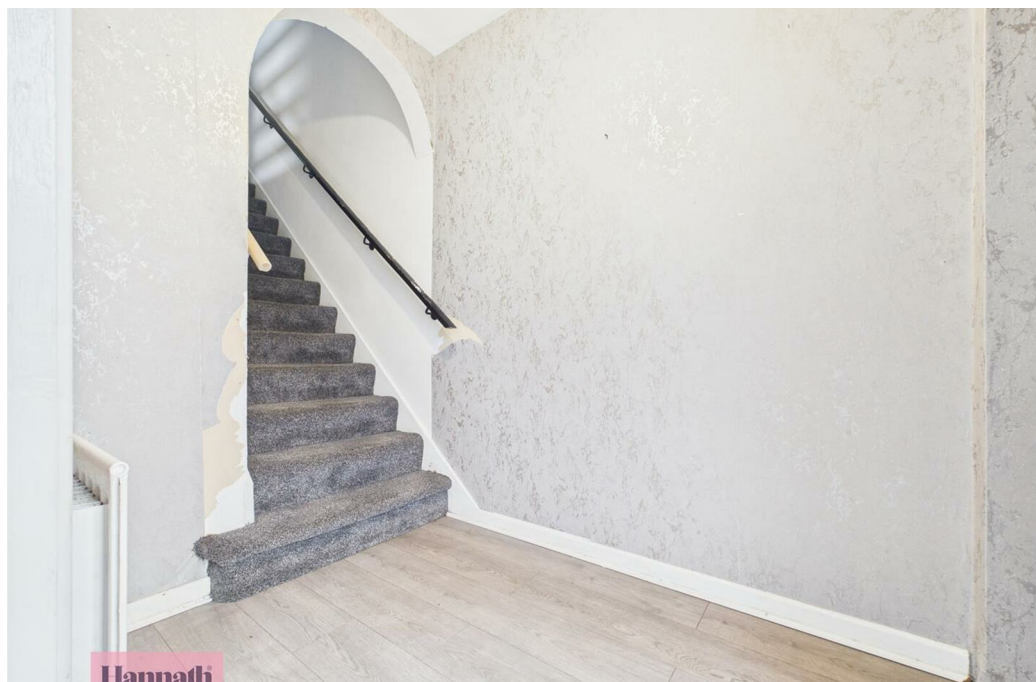
Asking Price £94,950

- Popular Residential Location
- Enclosed Rear Yard
- OFCH
- 3 bedroom end terrace property
- Three piece bathroom suite
- Spacious Property
- Ideal for first time buyers or investors

Energy Efficiency Rating		
	Current	Potential
Very energy efficient - lower running costs		
(92 plus) A		
(81-91) B		
(69-80) C		
(55-68) D		
(39-54) E		
(21-38) F		
(1-20) G		
Not energy efficient - higher running costs		
Northern Ireland EU Directive 2002/91/EC		

32 Corcrain Drive, Craigavon BT62 4AW

Hannath are delighted to bring to the market this three bedroom end terrace property in Corcrain Drive Portadown. Well positioned in an established residential area, it is ideally placed for families and professionals with its close proximity to an array of amenities and transport links. It also benefits from a generous sized garden and enclosed rear yard. Early viewings recommended.



Entrance Hall

6'7x4'10

Wood laminate flooring, radiator

Living Room

15'0x12'5

Feature fireplace, wood laminate flooring, radiator

Kitchen

15'8x8'4

Range of units, wood laminate flooring, patio doors to rear, radiator

Landing

8'6x5'10

In carpet

Bedroom 1

11'4x9'5

In carpet, radiator

Bedroom 2

12'1x7'8

In carpet, radiator

Bedroom 3

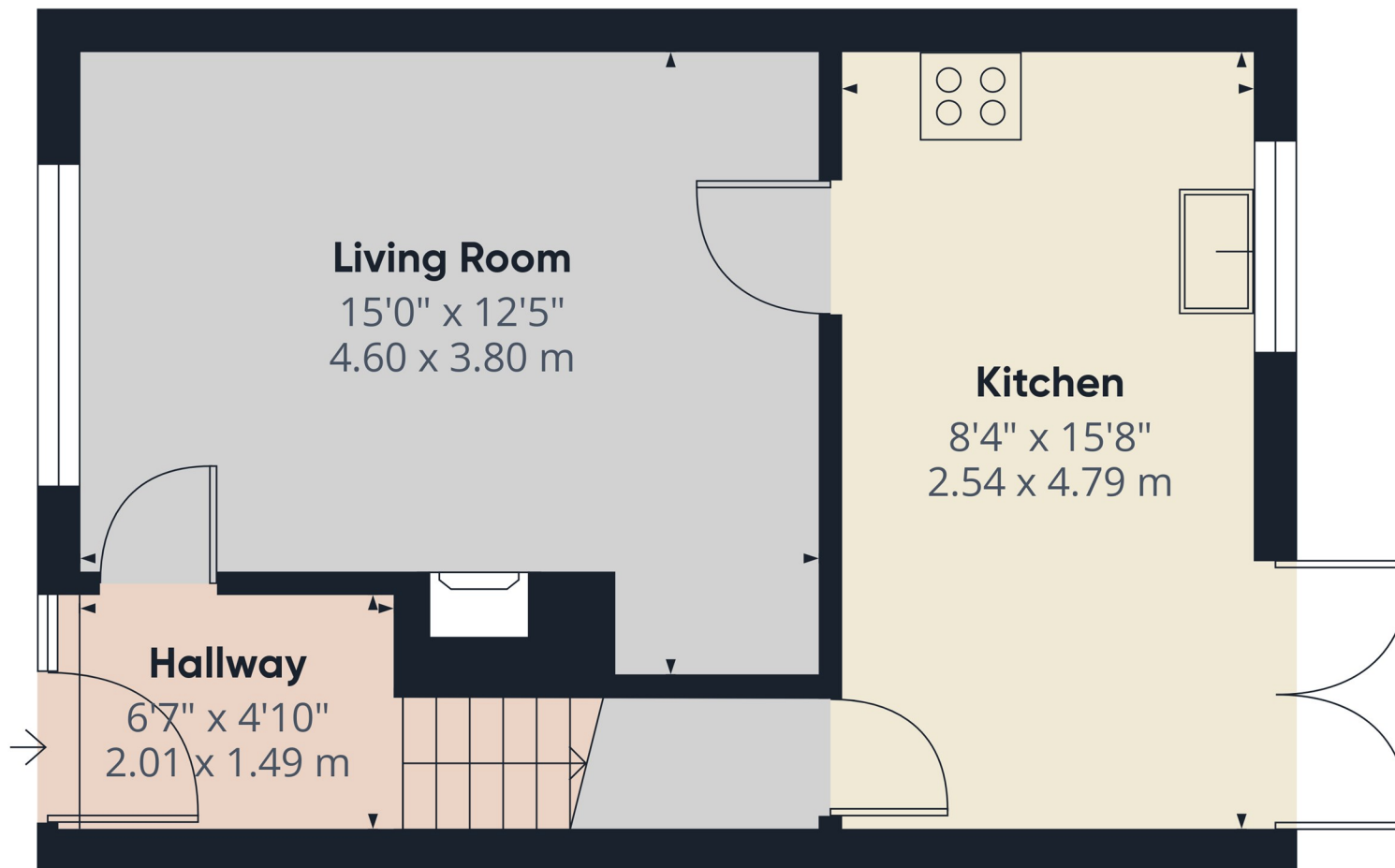
7'10x7'0

In carpet, radiator, built in storage

Bathroom

5'10x5'5

Electric shower over bath, wash hand basin, w.c., tiled walls, laminate flooring, radiator



Approximate total area⁽¹⁾

364 ft²
33.8 m²

(1) Excluding balconies and terraces

Calculations reference the RICS IPMS 3C standard. Measurements are approximate and not to scale. This floor plan is intended for illustration only.

GIRAFFE360



Ground Floor Building 1