



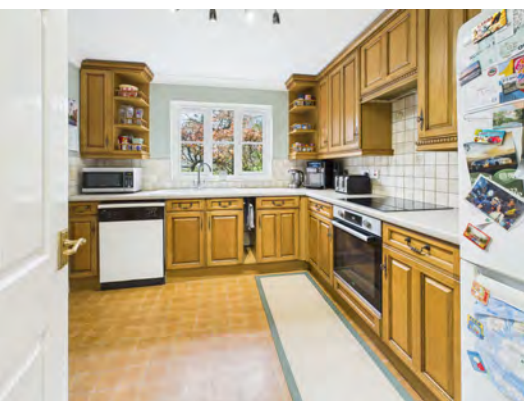
Bond
Oxborough
Phillips

Changing Lifestyles

East Grange Lydford EX20 4AR



Offers Over - £500,000



Changing Lifestyles

01822 600700

East Grange



- Central village location within the heart of Lydford
- Spacious four-bedroom family home
- Set back from the road with ample off-road parking
- Detached garage and private driveway
- Multiple reception rooms including garden room
- Kitchen with separate utility room and garden access
- Principal bedroom with en-suite and fitted wardrobes
- Private rear garden with patio and level lawn



the property enjoys an attractive approach with a tarmac driveway, additional gravel parking, and a detached garage, providing ample off-road parking for multiple vehicles. The sense of space continues to the rear, where a private and enclosed garden creates an ideal environment for family life and outdoor entertaining.

The accommodation begins with a welcoming entrance hall, complete with a ground-floor WC, leading through to a spacious central hallway that forms the hub of the home. The well-appointed kitchen is both practical and sociable, enhanced by a separate utility room with direct access to the garden — perfectly suited for busy households, pets, or returning from countryside walks. Adjacent to the kitchen, the dining room features French doors opening onto the patio, allowing for effortless indoor-outdoor living during the warmer months.

The dual-aspect lounge is a particularly inviting space, filled with natural light and offering pleasant views to both the front and rear of the property. Adjoining the lounge, a bright and versatile garden room provides flexible additional living space, ideal as a playroom, home office, snug, or entertaining area, with direct access to the garden further enhancing its appeal.

To the first floor, the principal bedroom is a standout feature, boasting four integrated wardrobes, a dedicated dressing area, and a modern en-suite shower room. Two further generously sized double bedrooms also benefit from fitted wardrobes, while the fourth bedroom, featuring an attractive bay window, enjoys a charming outlook to the front of the property. A contemporary family bathroom completes the accommodation on this level.

Externally, the property continues to impress. The driveway and detached garage offer excellent parking and storage options, while the rear garden has been thoughtfully designed to balance practicality with relaxation. A level lawn provides space for children to play, complemented by a patio seating area ideal for al fresco dining, and a garden shed offering additional storage.

Combining space, flexibility, and a prime village location, this substantial home presents a rare opportunity to secure a high-quality family residence in one of Lydford's most desirable positions.

01822 600700

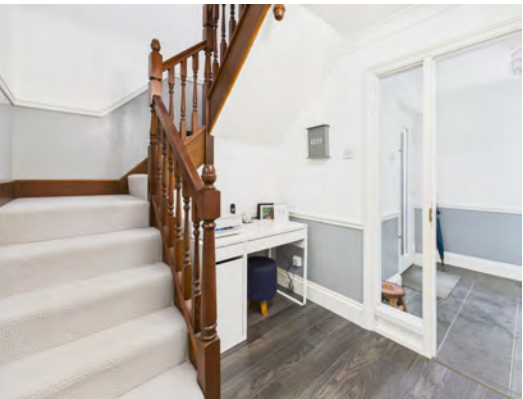
The historic village of Lydford is one of West Devon's most picturesque and sought-after locations, nestled on the western edge of Dartmoor National Park. Steeped in history, the village is famed for its Norman castle, the impressive Lydford Gorge (the deepest in the South West, cared for by the National Trust), and its charming mix of period cottages and traditional inns.

Lydford offers a welcoming community atmosphere with two popular pubs, a parish church, and stunning countryside walks right on the doorstep. The nearby town of Okehampton provides a wider range of shops, supermarkets, leisure facilities, and schooling, while the market town of Tavistock is also just a short drive away.

For those needing to commute, Lydford is well-positioned with easy access to the A30, connecting to Exeter and the M5 in under an hour. Rail links can be found in Okehampton, with a direct service to Exeter and beyond.

With its unique blend of history, natural beauty, and accessibility, Lydford offers an idyllic lifestyle in one of Devon's most desirable settings.

Changing Lifestyles



Please do not hesitate to contact
the team at
Bond Oxborough Phillips
Sales & Lettings on
01822 600700
for more information or to
arrange an accompanied viewing
on this property.

Scan here for
our Virtual Tour:





Floor 0



Floor 1

Have a property to sell or let?

If you are considering selling or letting your home, get in contact with us today on 01822 600700 to speak with one of our expert team who will be able to provide you with a free valuation of your home.

We have the facility to refer purchasers and vendors to conveyancing, mortgage advisors and Surveyors. It is your decision if you choose to deal with any of these companies however should you choose to use them we would receive a referral fee from them for recommending you. We will receive a referral fee between £50 - £300 depending on the company & individual circumstances. We have carefully selected these associates for the quality of their work and customer service levels.

PLEASE NOTE

Before any sale is formally agreed, we have a legal obligation under the Money Laundering regulations and Terrorist Financing Act 2017 to obtain proof of your identity and of your address, take copies and retain on file for five years and will only be used for this purpose. We carry out this through a secure platform to protect your data. Each purchaser will be required to pay £29.99 upon an offer verbally being agreed to carry out these checks prior to the property being advertised as sale agreed.

Consumer Protection Regulations: We have not tested any apparatus, equipment, fixtures and fittings or services and so cannot verify that they are in working order or fit for the purpose. References to the Tenure of a Property are based on information supplied by the seller. We have not had sight of the Title Documents. A buyer is advised to obtain verification from their solicitor or surveyor. Floorplans shown are for guidance only and should not be relied upon. Items shown in photographs are NOT included unless specifically mentioned within these details. They may however be able by separate negotiation. You are advised to check the availability of this property before travelling any distance to view. Particulars are produced in good faith to the best of our knowledge and are set out as a general guide only.