



Bond
Oxborough
Phillips

Changing Lifestyles

14 Tintagel Terrace

Port Isaac

PL29 3SE



BRITISH
PROPERTY
AWARDS

2023

★★★★★

GOLD WINNER

ESTATE AGENT
IN WADEBRIDGE
& ROCK



Guide Price - £825,000



Changing Lifestyles

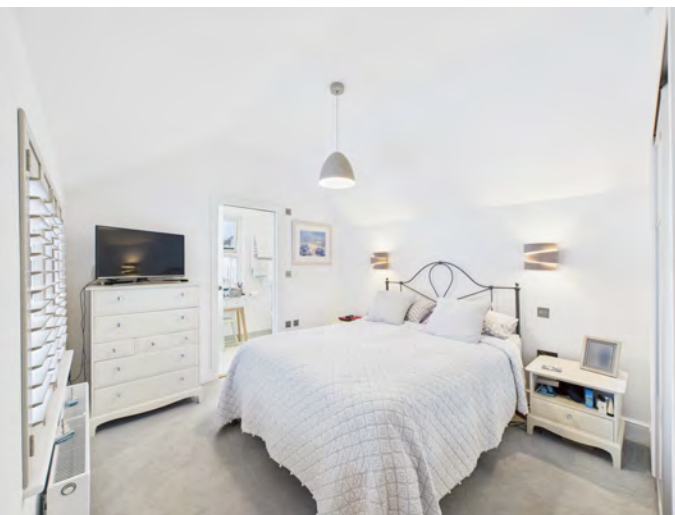
01208 814055

14 Tintagel Terrace, Port Issac, PL29 3SE



Discover this beautifully renovated 4-bedroom terraced home, offering modern comfort and style. Enjoy stunning, uninterrupted sea views across the picturesque North Coast.

- Impressive Terraced Modern Home
- Sleek Family Bathroom & Master En-Suite
- Stunning Coastal Sea Views
- Jaw Dropping Kitchen/Dining Extension
- Practical Utility Room
- Private Rear Garden
- Off-Road Parking
- Popular Coastal Location
- 4 Double Bedrooms
- Cosy Living Space
- 2 Minute Walk from the Harbour
- Council Banding - D
- EPC - E



Nestled within the historic and highly sought-after village of Port Isaac, 14 Tintagel Terrace is a beautifully renovated 4-bedroom family home that combines contemporary luxury with the charm of traditional Cornish living. This exceptional property, just moments from the vibrant harbor, offers an abundance of space, character, and modern convenience, making it the perfect home for families and those looking to embrace the picturesque coastal lifestyle.

Upon entry, you are greeted by a spacious porch area that immediately sets the tone for the rest of the home. This welcoming space leads you into a grand hallway, providing an inviting first impression with its high ceilings and natural light. To the left, the cosy yet generous living room awaits. The focal point of this room is a stunning bay window with fitted shutters that allow natural light to flood in, enhancing the room's airy and light-filled ambiance. A wood-burning stove adds warmth and charm, making this the ideal spot to unwind during cooler months. There is also ample space for a variety of furniture, allowing you to create a comfortable, inviting living area that suits your family's needs.

As you continue down the hallway, the property offers a convenient utility room that serves as an ideal space to hide away white goods, keeping the main living areas neat and tidy. Adjacent to this is a separate ground-floor toilet, providing practicality for family living and guests alike.

At the back of the property sits the real heart of the home: an impressive kitchen and dining room extension that has been meticulously designed to meet modern living standards. This expansive space features bi-fold doors that open out onto the private rear garden, creating a seamless connection between indoor and outdoor living and providing an excellent setting for al fresco dining. A large skylight, enhanced with LED lighting, fills the room with natural light during the day and offers an additional touch of luxury in the evenings. The fully fitted kitchen is equipped with sleek, high-end appliances and a centrally positioned island, perfect for preparing meals or enjoying casual gatherings. The dining area offers generous space for a large dining table, creating an inviting environment for family meals and entertaining friends. To complement this, a hidden snug can be found tucked away from the hustle and bustle of the main living areas. This cosy retreat features its own wood-burning stove, providing a perfect setting to relax with a glass of wine or read a book.

Moving upstairs, the home offers four generously sized double bedrooms, all tastefully designed with comfort and style in mind. Two of the front-facing bedrooms enjoy breathtaking, panoramic sea views stretching across the North Coast, offering a truly unique feature that enhances the appeal of this property. The master bedroom is a true standout, offering not only built-in storage for convenience but also a private en suite bathroom. The en suite features a walk-in shower, WC, and basin, creating a private sanctuary that complements the spaciousness of the master bedroom.

The family bathroom is equally impressive, featuring high-quality fittings and luxurious touches, including a freestanding bath, separate shower, WC, basin, and an illuminated LED mirror. This bathroom has been carefully designed to provide a spa-like atmosphere, perfect for unwinding after a long day.

Externally, 14 Tintagel Terrace continues to impress with its beautifully landscaped private rear garden. The garden features a stylish patio area and a raised terrace, offering plenty of room to enjoy the sunny Cornish weather and entertain guests. The garden is a tranquil space where you can relax, dine, or simply enjoy the peaceful surroundings. The property also includes private parking for two vehicles, a rare and valuable feature in such a desirable village location.

Opportunities to purchase a property of this quality, in such a highly desirable location, are rare. Whether you're seeking a family home or a luxurious retreat by the sea, 14 Tintagel Terrace presents a unique opportunity to live in one of Cornwall's most picturesque and sought-after coastal villages. A viewing is highly recommended to fully appreciate everything this outstanding home has to offer.

Changing Lifestyles

Port Isaac is a captivating fishing village nestled on the rugged North Cornwall coast, known for its narrow, winding streets, traditional stone cottages, and working harbor. Surrounded by dramatic cliffs and offering stunning views of the wild Atlantic Ocean, the village is a haven for nature lovers, with coastal paths that lead to breathtaking vistas and hidden coves. The village's rich maritime history is still evident today, with local fishing boats bringing in fresh catches and the harbor bustling with activity.

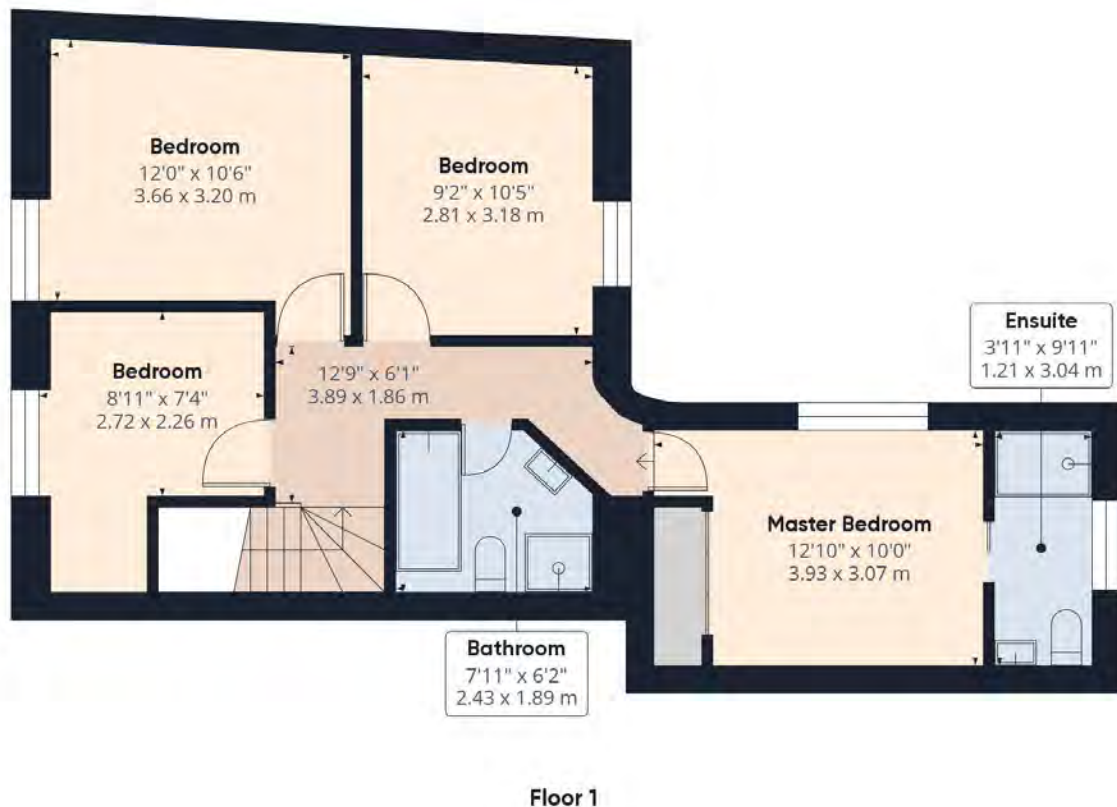
Port Isaac's timeless charm has been immortalized as the filming location for the popular TV series Doc Martin, drawing visitors from around the world to explore its quaint streets and iconic locations. The village's warm, welcoming atmosphere invites visitors to unwind and immerse themselves in its beauty, whether they're enjoying fresh seafood at one of the cozy restaurants, browsing the unique shops, or simply taking in the serene surroundings. With its blend of coastal charm, rich heritage, and stunning natural beauty, Port Isaac offers the perfect escape for those seeking a quintessential Cornish experience.



Please do not hesitate to contact
the team at
Bond Oxborough Phillips
Sales & Lettings on
01208 814055
for more information or to
arrange an accompanied viewing
on this property.

Scan here for
our Virtual Tour:





Have a property to sell or let?

If you are considering selling or letting your home, get in contact with us today on 01208 814055 to speak with one of our expert team who will be able to provide you with a free valuation of your home.

We have the facility to refer purchasers and vendors to conveyancing, mortgage advisors and Surveyors. It is your decision if you choose to deal with any of these companies however should you choose to use them we would receive a referral fee from them for recommending you. We will receive a referral fee between £50 - £300 depending on the company & individual circumstances. We have carefully selected these associates for the quality of their work and customer service levels.

Consumer Protection Regulations: We have not tested any apparatus, equipment, fixtures and fittings or services and so cannot verify that they are in working order or fit for the purpose. References to the Tenure of a Property are based on information supplied by the seller. We have not had sight of the Title Documents. A buyer is advised to obtain verification from their solicitor or surveyor. Floorplans shown are for guidance only and should not be relied upon. Items shown in photographs are NOT included unless specifically mentioned within these details. They may however be able by separate negotiation. You are advised to check the availability of this property before travelling any distance to view. Particulars are produced in good faith to the best of our knowledge and are set out as a general guide only.