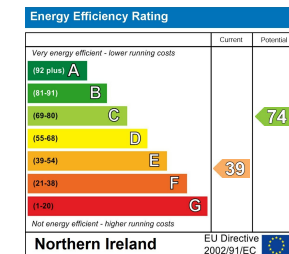




18 Lurgan Road, Portadown, Craigavon, BT63 5BJ

£199,950

- Three bedroom semi detached home
- Recently renovated internals
- Enclosed rear garden
- Desirable Location
- Detached garage
- Kitchen/diner with patio doors to rear
- Tarmac Driveway
- Reception room with open fire
- Family Bathroom
- Oil fired central heating



# 18 Lurgan Road, Craigavon BT63 5BJ

Hannath are delighted to welcome to the market this spacious and recently redecorated three bedroom semi detached property with detached garage in a very desirable location. Located on the Lurgan Road, Portadown this home benefits a lounge with feature open fire, an open plan kitchen/dining room with ample storage, three bedrooms and family bathroom. Externally the property has an enclosed rear garden, large tarmac drive way and spacious rear garden.



### **Entrance Hall**

15'7x6'2

Tiled flooring, radiator

### **Living Room**

14'1x11'9

Feature fireplace, bay window, in carpet, radiator

### **Kitchen/Diner**

18'7x12'4

Range of high and low level units, integrated appliances, tiled flooring, radiator, patio doors to rear

### **Landing**

9'7x4'2

In carpet

### **Bedroom 1**

14'2x10'2

In carpet, bay window, radiator

### **Bedroom 2**

12'4x10'9

In carpet, radiator

### **Bedroom 3**

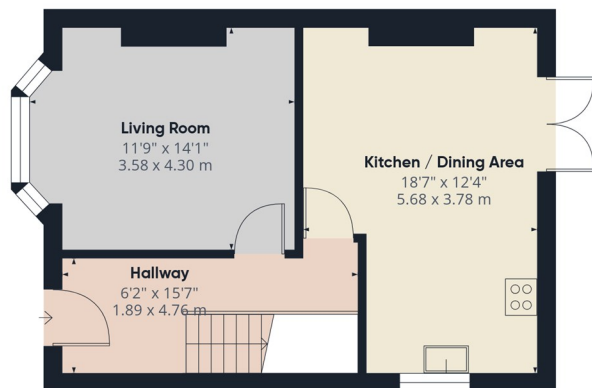
8'6x7'11

In carpet, radiator

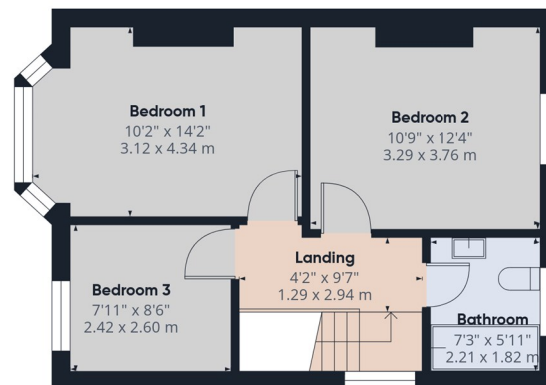
### **Bathroom**

7'3x5'11

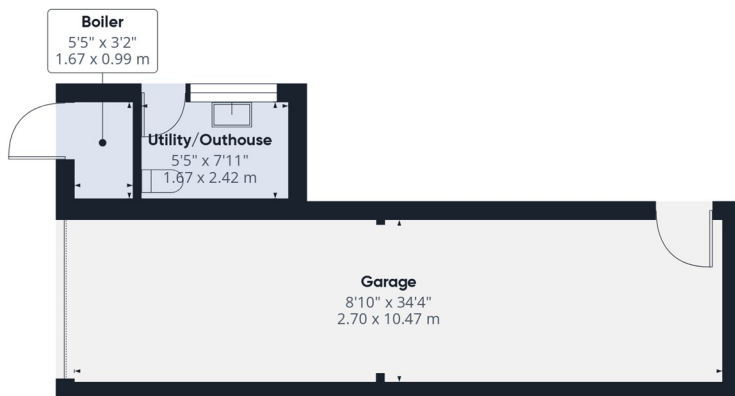
Three piece bathroom suite, bath with shower over, wash hand basin, w.c., heated towel rail, tiled walls and flooring



Ground Floor Building 1



Floor 1 Building 1



Ground Floor Building 2

**Hannath®**

Approximate total area<sup>(1)</sup>

1248 ft<sup>2</sup>

116 m<sup>2</sup>

(1) Excluding balconies and terraces

Calculations reference the RICS IPMS 3C standard. Measurements are approximate and not to scale. This floor plan is intended for illustration only.

GIRAFFE360