

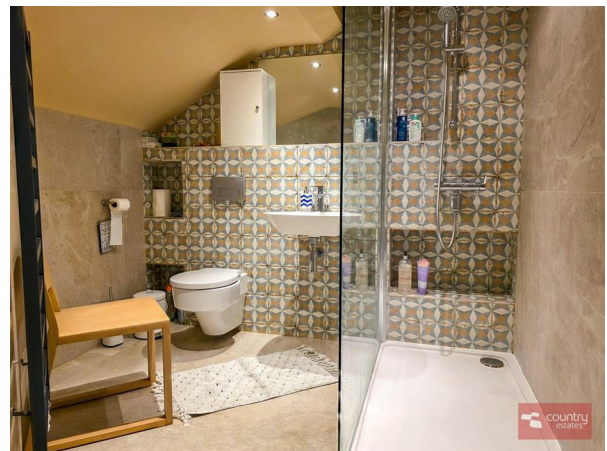
## 252c - Apartment 66 Whitewell Road, Newtownabbey, BT36 7NH



- Spacious Duplex Apartment
- Two Well Presented Bedrooms
- Open Plan Kitchen/Living/Dining
- Contemporary Shaker Style Fitted Kitchen
- Luxurious Fully Tiled Shower Room
- Popular Convenient Location
- Recently Renovated and Immaculately Presented Throughout
- Gas Fired Central Heating
- PVC double Glazed Windows
- Ideal for First Time Buyers

### PRICE Offers Over £129,950

*Recently renovated and beautifully presented throughout, this spacious duplex apartment is ideally located just off the Whitewell Road. Within close proximity to local shops, schools and public transport links. Briefly comprising 2 well proportioned bedrooms, open plan kitchen/living/dining space and a luxurious Spanish tiled shower room. An early viewing is highly recommended.*



**>Sales >New Homes >Commercial >Rentals >Mortgages**

Antrim  
12 Church Street  
BT41 4BA  
Tel: (028) 9446 6777

Ballyclare  
51 Main Street  
BT39 9AA  
Tel: (028) 9334 0726

Glengormley  
9A Ballyclare Road  
BT36 5EU  
Tel: (028) 9083 0803

## ACCOMMODATION

Communal front door into entrance hall.

## ENTRANCE

Hard wood front door into well presented entrance hall with tiled floor. Storage cupboard with plumbing for washing machine. Boot bench with overhead storage.

## OPEN PLAN KITCHEN/LIVING/DINING

16'11" x 13'8" at widest points (5.16m x 4.17m at widest points)

Lounge with high quality laminate flooring. Open into contemporary fitted kitchen equipped with a comprehensive range of high and low level shaker style units and contrasting work surfaces. One and a half bowl composite sink unit with swan neck mixer tap. Integrated oven with separate conduction hob and over head extractor fan housed in matching pull out canopy. Plumbed for dishwasher. Space for free standing fridge freezer. Tiled floor. Part tiled walls. Recessed down lighting.

## BEDROOM 2

10'9" x 9'7" (3.29 x 2.93)

Presently used as home gym. Quality laminate flooring.

## FIRST FLOOR

Landing with quality laminate flooring.

## BEDROOM 1

13'7" x 12'11" at widest points (4.14m x 3.94m at widest points)

Quality laminate flooring. Built in wardrobes.

## LUXURIOUS SHOWER ROOM

Comprising large step in shower cubicle with thermostatically controlled shower unit, wall mounted wash hand basin with monobloc tap and a wall hung button flush WC. Fully tiled with imported Spanish tiles. Recessed down lighting. Towel radiator.

## OUTSIDE

Communal parking forecourt to front.



## Floor Plan

This plan is for illustrative purposes only



Energy Efficiency Rating		
	Current	Potential
Very energy efficient - lower running costs		
(92 plus) <b>A</b>		
(81-91) <b>B</b>		
(69-80) <b>C</b>		
(55-68) <b>D</b>		
(39-54) <b>E</b>		
(21-38) <b>F</b>		
(1-20) <b>G</b>		
Not energy efficient - higher running costs		
Northern Ireland		EU Directive 2002/91/EC

**IMPORTANT NOTE TO ALL PURCHASERS. WE HAVE NOT TESTED ANY OF THE SYSTEMS OR APPLIANCES AT THIS PROPERTY.**



Country Estates (N.I.) Ltd. for themselves and the Vendors of this property whose agents are, give notice that:

These particulars do not constitute any part of an offer or contract

All statements contained in these particulars as to this property are made without responsibility on the part of Country Estates (N.I.) Ltd. or the vendor

None of the statements contained in these particulars as to this property are to be relied on as statements or representations of fact

Any intending purchaser must satisfy himself or otherwise as to the correctness of the statement contained in these particulars

The vendor does not make or give, and neither Country Estates (N.I.) Ltd. nor any person in their employment, has any authority to make or give representation or warranty whatever in relation to this property.