



## 24 Drumford Meadow, Portadown, Craigavon, County Armagh, BT62 5GD £950 Per Month

- Three bedroom End Terrace
- Deposit: £950
- Popular Residential Development
- Beautifully Presented Throughout
- Unfurnished
- GFCH
- Ideally situated close to Craigavon Area Hospital, Rushmere Shopping Centre and Portadown Town Centre
- Driveway

Energy Efficiency Rating		
Very energy efficient - lower running costs	Current	Potential
(82 plus) <b>A</b>		
(81-81) <b>B</b>		
(69-80) <b>C</b>		
(55-68) <b>D</b>		
(39-54) <b>E</b>		
(21-38) <b>F</b>		
(1-20) <b>G</b>		
Not energy efficient - higher running costs		
Northern Ireland EU Directive 2002/91/EC		

# 24 Drumford Meadow, Craigavon BT63 5GD

We are delighted to offer for rental this beautifully presented, three bedroom end-terrace property in Drumford Meadow, Portadown.

Ideally situated in the a popular, modern development beside Craigavon Area hospital; it is also within minutes of Rushmere shopping centre, Craigavon Omniplex and Portadown town centre, as well as other local amenities.

Internally, the property is immaculate, with high specification finishes throughout.

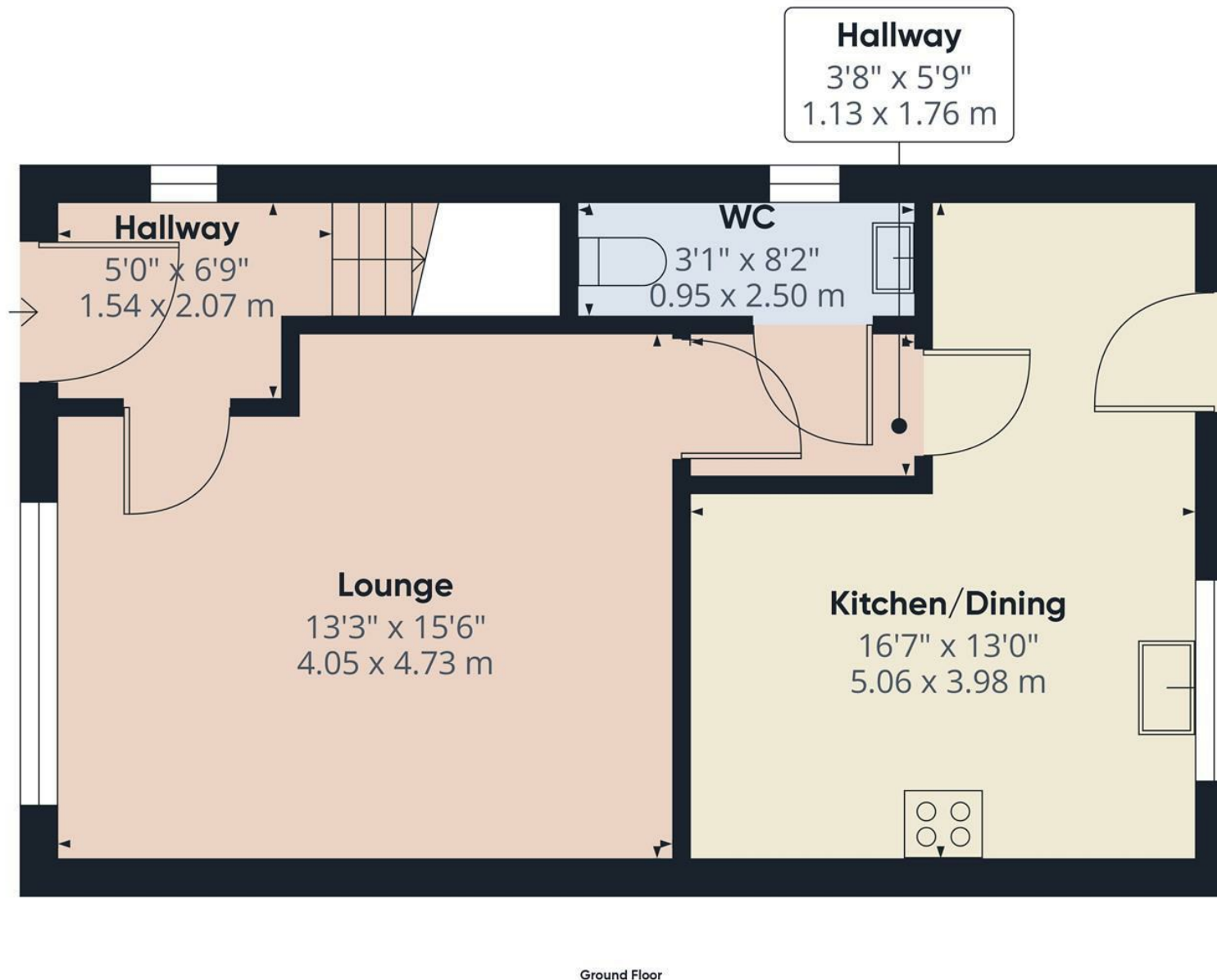
Entering into the spacious entrance hallway, the ground floor comprises a large and bright lounge leading to an open, modern kitchen. There is also a downstairs W.C and cloakroom space off the kitchen.

The first floor offers three good-size double bedrooms as well as a master bathroom with bath and separate shower enclosure.

Externally, there is a private and enclosed rear garden with both patio and grassed areas. The front features a driveway that can accommodate two cars.







Approximate total area<sup>(1)</sup>

467.47 ft<sup>2</sup>

43.43 m<sup>2</sup>

(1) Excluding balconies and terraces

While every attempt has been made to ensure accuracy, all measurements are approximate, not to scale. This floor plan is for illustrative purposes only.

Calculations are based on RICS IPMS 3C standard.

GIRAFFE360