



House - Mid Terrace (EPC Rating: )

40 LICHFIELD AVENUE, BELFAST, BT5 5JQ

Per month

£1,300 Per



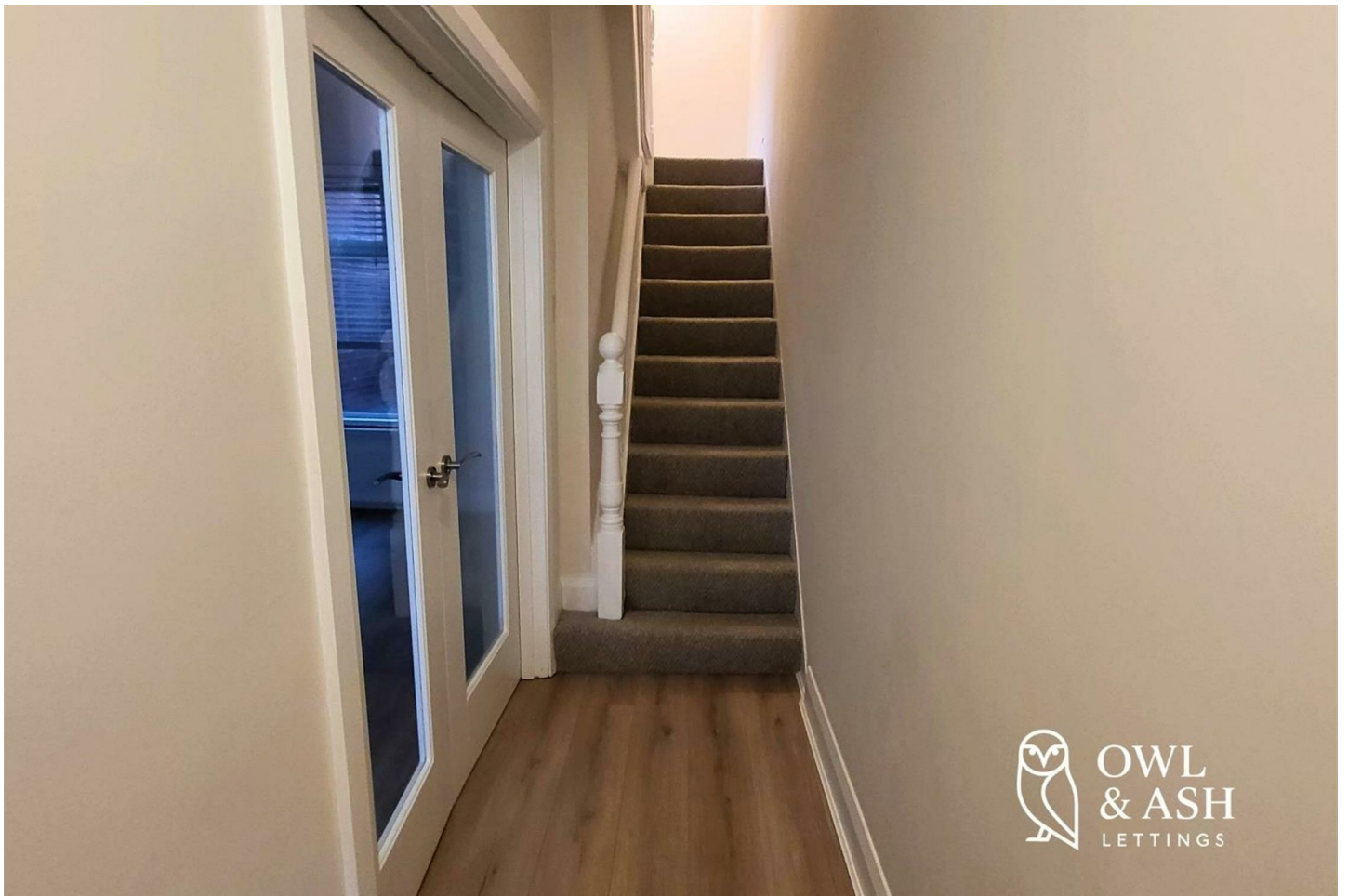
# 4 Bedroom House – Mid Terrace located in Belfast

Owl & Ash Lettings are pleased to present this beautifully refurbished three-storey townhouse, perfectly positioned in the heart of East Belfast. Thoughtfully finished throughout, this charming home offers a welcoming space that will suit both growing families and busy professionals looking to put down roots in a friendly and inviting neighbourhood.

Set across three generous floors, the property boasts three bright and comfortable bedrooms, each offering plenty of room to make your own. The layout feels effortless and practical, giving you the flexibility to unwind, work from home, or host friends with ease. The house carries the character of its era, with the addition of modern and sleek interior finishes, beautifully blending historic charm and modern home design.

Lichfield Avenue is known for its friendly community feel, and residents enjoy excellent access to local shops, cafés, schools, and green spaces. With reliable transport links close by, travelling into the city centre or further afield couldn't be simpler.

More than just a place to live, this lovely townhouse home offers the chance to settle into a warm and welcoming part of Belfast and to create lasting memories. If you're searching

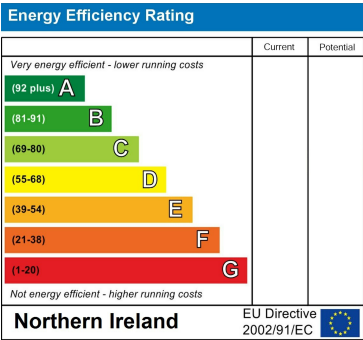




Council Tax Band

Northern Ireland

Energy Performance Graph



Call us on

Eimear@owlandashlettings.com

owlandashlettings.com

Agents Note: Whilst every care has been taken to prepare these particulars, they are for guidance purposes only. All measurements are approximate and are for general guidance purposes only and whilst every care has been taken to ensure their accuracy, they should not be relied upon and potential buyers are advised to recheck the measurements.