



Bond
Oxborough
Phillips

Changing Lifestyles

Yennadon House, Dousland, PL20 6NA



Offers Over - £900,000



Yennadon House, Dousland, PL20 6NA



- Magnificent late Victorian home
- Gated entrance & sweeping drive
- Striking period façade
- Multiple elegant reception rooms
- Up to seven versatile bedrooms
- Sauna & basement storage
- Two acres of private grounds
- Tennis court, orchard & double garage



Yennadon House in Dousland is a truly magnificent late Victorian residence that captivates from the moment you pass through its electric gates and approach via a sweeping private driveway. Behind its breathtaking façade lies a home of exceptional character and charm, offering multiple reception rooms, flexible accommodation of up to seven bedrooms, and thoughtful features including a sauna and basement storage. Set in around two acres of beautifully landscaped grounds, the property enjoys complete privacy with formal gardens, a tennis court, orchard, and double garage — a rare opportunity to own a home of such elegance and distinction in this idyllic Dartmoor setting

Yennadon House, Dousland, PL20 6NA



Location:

Changing Lifestyles

Nestled on the edge of the Dartmoor National Park, Dousland is a peaceful and picturesque village offering a wonderful balance of rural tranquillity and accessibility. Surrounded by breathtaking moorland scenery, it's the perfect setting for those who enjoy walking, cycling, and outdoor pursuits, with miles of trails and open countryside on the doorstep. Despite its idyllic location, Dousland remains well-connected, with local amenities including a traditional pub, village hall, and excellent access to nearby Yelverton.

Just a short distance away, Yelverton serves as the area's main hub, providing a wider range of everyday facilities such as shops, cafés, a post office, health centre, and primary school. The area is also well placed for commuting, with Plymouth only around 10 miles to the south, offering mainline rail services and access to the A38 for travel further afield.

Together, Dousland and Yelverton offer a rare combination of country living and modern convenience — a sought-after location where you can enjoy the beauty of Dartmoor while remaining close to the coast, city, and excellent local amenities.





Internal Description:

From the moment you pass through the electronically operated gates and follow the sweeping private driveway, a first glimpse of Yennadon House is certain to take your breath away. Its striking late Victorian façade, rich in period detail, is nothing short of magnificent – and it's easy to see why the current owners fell in love at first sight.

Beyond its impressive exterior, Yennadon House continues to enchant at every turn. The interior is a celebration of timeless character, combining generous proportions with exquisite original features. The ground floor offers an abundance of reception space, ideal for both everyday living and entertaining. From elegant drawing and dining rooms to cosy family areas and hobby spaces – there is a place for every mood and occasion. There's even a sauna for the ultimate in-home relaxation.

A sweeping, galleried staircase leads to the first floor, where the sense of history continues. The property offers flexible accommodation, with up to seven bedrooms depending on your needs. A delightful loft room makes an ideal private office, studio, or additional bedroom. One bedroom enjoys a connecting door to the next – perfect for families with younger children or guests.

Not to be overlooked, the basement provides excellent storage but also offers exciting potential for further use, subject to imagination and the usual consents.

Set in approximately two acres of private, mature grounds, the outside space is every bit as impressive as the home itself. The landscaped formal gardens are beautifully framed by established trees, providing peace and privacy from the outside world. To one side, a double garage and ample parking cater easily for multiple vehicles, while to the other, the property's private tennis court is sure to delight any Wimbledon enthusiast. Beyond this lies a small orchard and a large garden store – perfect for the ride-on mower and garden essentials.

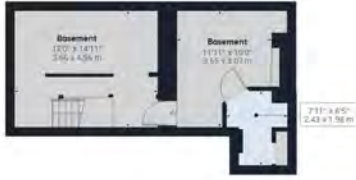
Quite simply, Yennadon House is a home that must be experienced to be fully appreciated. It offers grandeur, warmth, and a true sense of escape – all within easy reach of local amenities and the beauty of Dartmoor.

Arrange your private viewing today – and prepare to fall in love with your next home.

Changing Lifestyles







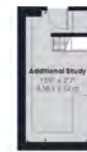
Floor -1



Floor 0



Floor 1



Floor 2

Have a property to sell or let?

If you are considering selling or letting your home, get in contact with us today on 01822 600700 to speak with one of our expert team who will be able to provide you with a free valuation of your home.

We have the facility to refer purchasers and vendors to conveyancing, mortgage advisors and Surveyors. It is your decision if you choose to deal with any of these companies however should you choose to use them we would receive a referral fee from them for recommending you. We will receive a referral fee between £50 - £300 depending on the company & individual circumstances. We have carefully selected these associates for the quality of their work and customer service levels.

Consumer Protection Regulations: We have not tested any apparatus, equipment, fixtures and fittings or services and so cannot verify that they are in working order or fit for the purpose. References to the Tenure of a Property are based on information supplied by the seller. We have not had sight of the Title Documents. A buyer is advised to obtain verification from their solicitor or surveyor. Floorplans shown are for guidance only and should not be relied upon. Items shown in photographs are NOT included unless specifically mentioned within these details. They may however be able by separate negotiation. You are advised to check the availability of this property before travelling any distance to view. Particulars are produced in good faith to the best of our knowledge and are set out as a general guide only.