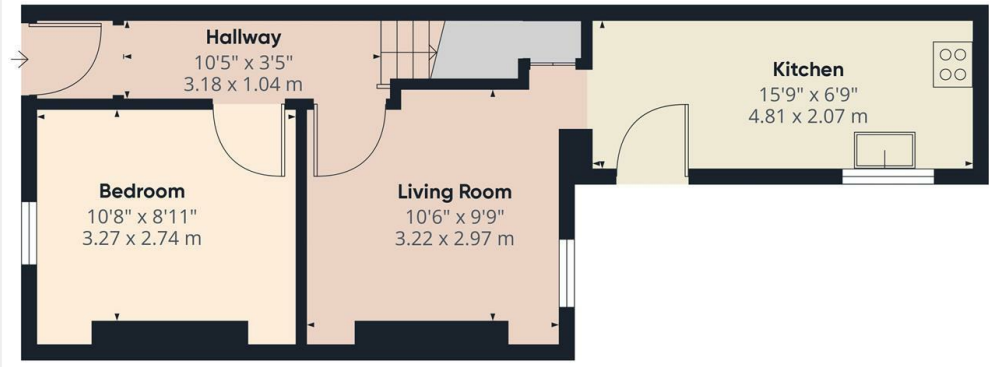


Room 5, 46 Portmore Street, Portadown, Craigavon, County

£95 Per Week

- Beautifully Presented House Share
- Single Occupancy per room
- Cleaning - A cleaner will attend bi-monthly - Cost included in Rent
- Situated in the heart of Portadown town centre
- Fully Furnished
- GFCH
- Property finished to an excellent standard throughout
- Superfast WIFI Throughout Property - Cost included in Rent
- FOUR ROOMS CURRENTLY AVAILABLE - ENQUIRE TODAY

Hannath



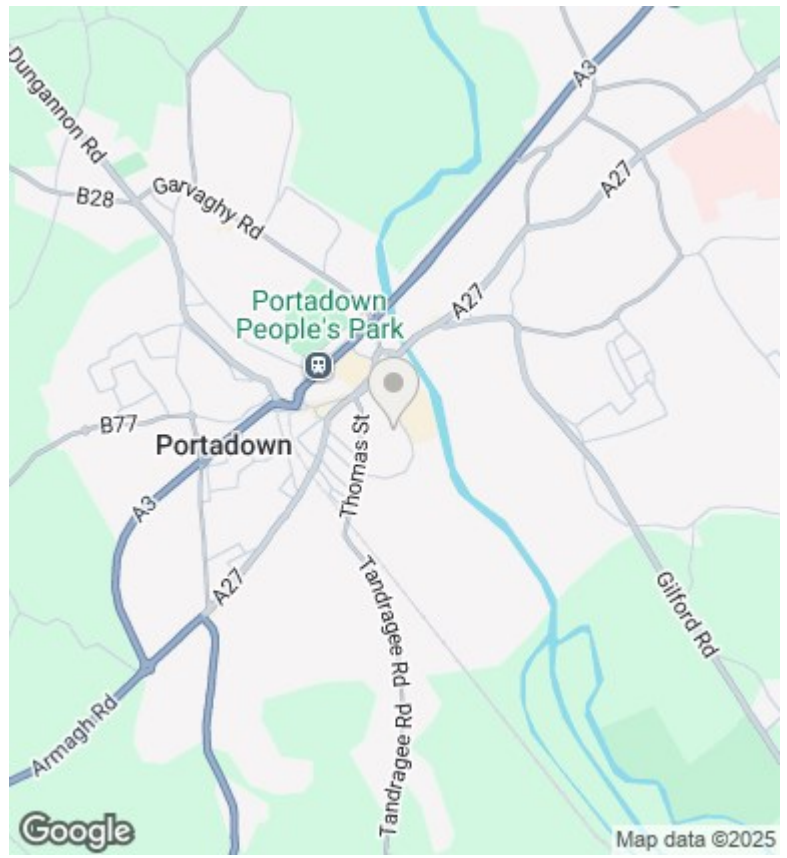
Approximate total area⁽¹⁾
387.9 ft²
36.04 m²

(1) Excluding balconies and terraces

While every attempt has been made to ensure accuracy, all measurements are approximate, not to scale. This floor plan is for illustrative purposes only.

GIRAFFE360

Ground Floor



Directions

Viewings

Viewings by arrangement only. Call 02838 399911 to make an appointment.

Council Tax Band

Northern Ireland

EPC Rating:

