



3 Hantona Close Highampton EX21 5BW



Guide Price - £475,000



3 Hantona Close, Highampton, EX21 5BW.

A modern detached family home with four bedrooms, triple glazing, spacious living areas, a low-maintenance garden, workshop, ample parking, and excellent energy-efficient features...



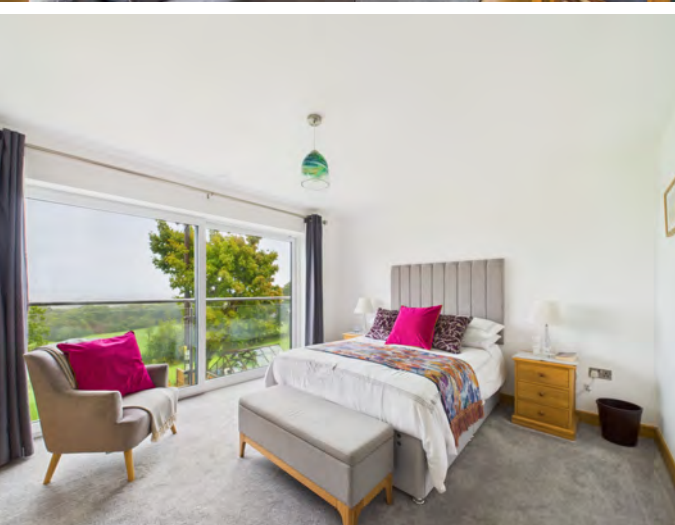
- Four Bedroom Detached Home
- Energy-Efficient With Triple Glazing
- Driveway Parking And Garage
- Modern Kitchen-Diner With Appliances
- Large Utility With Garden Access
- Dual-Aspect Living Room With Burner
- Spacious Ground Floor Cloakroom
- Principal Suite With Juliet Balcony
- State of the Art MVHR System
- Luxury Bathroom and En-Suite Bathroom
- Well Established Garden
- Council Tax Band - E
- EPC - A



Would you benefit from additional living space, a move to a more rural setting, or the perfect balance of modern efficiency and countryside charm? This exceptional four-bedroom detached home offers just that, with breathtaking views, energy-efficient features, and a spacious, versatile layout.

Set within the heart of Highampton, this property enjoys a private driveway with ample parking for multiple vehicles, a garage with a rolling electric door, and a beautifully presented frontage framed by mature planting. The home itself is designed with sustainability in mind, boasting an air source heat pump, solar panels, underfloor heating across both floors, and the added benefit of triple glazing throughout.

Upon entry, the welcoming hallway provides access to the ground floor accommodation, where a spacious kitchen-diner takes centre stage. This contemporary space is complete with high and low-level cabinetry and integrated appliances, including a halogen hob, eye-level double ovens, warming drawer, fridge, and dishwasher. A seating area makes the most of the far-reaching countryside views, with bi-fold doors leading seamlessly onto the private patio, ideal for entertaining or al-fresco dining. A particularly large utility space offers excellent storage, a granite sink, and side access to the garden.



The living room is a beautifully designed space, flooded with natural light through its dual-aspect windows and doors. A log burner creates a cosy focal point, while another set of bi-fold doors further enhances the indoor-outdoor flow. A generous under-stairs cupboard provides practical storage, alongside a spacious cloakroom that offers potential for conversion to a wet room if required.

Ascending to the first floor, the master suite is the true star, featuring a walk-in wardrobe, a stylish en-suite shower room, and a Juliet balcony overlooking rolling fields. Three further double bedrooms, each with built-in storage, offer versatile accommodation. The family bathroom is finished to a high standard, boasting a bath with a rainfall shower, vanity storage, and a heated towel rail.

The rear garden provides a peaceful external retreat, designed with low maintenance in mind and enhanced by mature shrubs, raised vegetable beds, and a greenhouse. A well-positioned patio, directly accessible from both the kitchen and living room, offers the perfect space for outdoor dining and relaxation. An additional shed/workshop provides further external storage, making the most of this wonderful countryside setting.

Changing Lifestyles

Highampton is a charming rural village in the heart of Devon, offering a peaceful countryside lifestyle with excellent accessibility. Surrounded by rolling farmland and picturesque landscapes, it's ideal for those seeking tranquility while remaining close to Hatherleigh, Okehampton, and Holsworthy.

The village boasts a welcoming community, featuring the well-regarded Highampton Community Primary School and the traditional Golden Inn, a thatched 16th-century pub known for its cozy atmosphere. Local amenities enhance the village's appeal.

Outdoor enthusiasts will find fantastic walking, cycling, and horse-riding opportunities, with Dartmoor National Park and the North Devon coastline just a short drive away.

With its blend of rural charm and convenience, Highampton attracts families, retirees, and those looking to escape to the countryside. Whether searching for a character cottage, modern home, or property with land, Highampton offers diverse options. If you're considering a move, this delightful village is worth exploring.



Please do not hesitate to contact
the team at
Bond Oxborough Phillips
Sales & Lettings on
01837 500600
for more information or to
arrange an accompanied viewing
on this property.

Scan here for
our Virtual Tour:





Floor 0

Approximate total area⁽¹⁾

1691 ft²

157.2 m²

Balconies and terraces

238 ft²

22.1 m²

Reduced headroom

8 ft²

0.8 m²



Have a property to sell or let?

If you are considering selling or letting your home, get in contact with us today on 01837 500600 to speak with one of our expert team who will be able to provide you with a free valuation of your home.

We have the facility to refer purchasers and vendors to conveyancing, mortgage advisors and Surveyors. It is your decision if you choose to deal with any of these companies however should you choose to use them we would receive a referral fee from them for recommending you. We will receive a referral fee between £50 - £300 depending on the company & individual circumstances. We have carefully selected these associates for the quality of their work and customer service levels.

Consumer Protection Regulations: We have not tested any apparatus, equipment, fixtures and fittings or services and so cannot verify that they are in working order or fit for the purpose. References to the Tenure of a Property are based on information supplied by the seller. We have not had sight of the Title Documents. A buyer is advised to obtain verification from their solicitor or surveyor. Floorplans shown are for guidance only and should not be relied upon. Items shown in photographs are NOT included unless specifically mentioned within these details. They may however be able by separate negotiation. You are advised to check the availability of this property before travelling any distance to view. Particulars are produced in good faith to the best of our knowledge and are set out as a general guide only.

PLEASE NOTE:

Before any sale is formally agreed, we have a legal obligation under the Money Laundering regulations and Terrorist Financing Act 2017 to obtain proof of your identity and of your address, take copies and retain on file for five years and will only be used for this purpose. We carry out this through a secure platform to protect your data. Each purchaser will be required to pay £29.99 upon an offer verbally being agreed to carry out these checks prior to the property being advertised as sale agreed.