



15 Ashvale Drive , Royal Hillsborough, BT26 6DN £1,200 Per month

Cairns and Downing Sales & Lettings are thrilled to bring to the rental market this fully renovated three-Bedroom Semi-Detached Home in Royal Hillsborough.

This property is situated in a quiet cul-de-sac in a highly sought-after development just off Ballynahinch Road. Fully renovated to an exceptionally high standard throughout, the property offers stylish, modern living in a tranquil yet convenient location.

Just a short walk from Hillsborough Forest Park and the local Primary School, this home is perfect for families or professionals seeking comfort, quality, and accessibility in their next home.

Step into a beautifully upgraded interior featuring a spacious lounge with a feature wood burner, a bright, open-plan kitchen/dining area finished to a contemporary standard. All three bedrooms are generously sized, while the recently modernized bathroom and separate W.C. add to the home's turnkey appeal.

Externally, the property offers a detached garage, a spacious driveway with room for multiple cars, and private front and rear gardens laid in lawn – ideal for relaxing or entertaining outdoors.

This immaculate home offers modern comfort in a peaceful, family-friendly setting — ready for immediate occupation.

- Fully renovated throughout to a high standard
- Three well-proportioned bedrooms
- Quiet cul-de-sac location on an elevated site
- Detached garage & ample driveway parking
- Front and rear gardens in lawn
- PVC double glazed windows & doors
- Oil-fired central heating
- Walking distance to Hillsborough Forest Park & local Primary School

Viewing

Please contact our Cairns and Downing Office on 02896 223 011 if you wish to arrange a viewing appointment for this property or require further information.



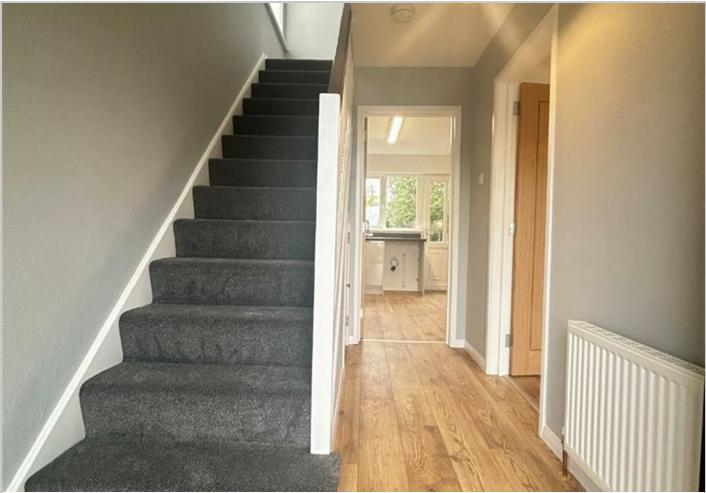
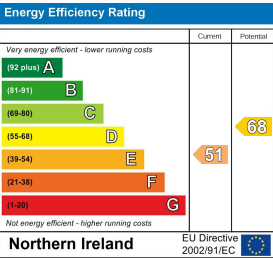
Floor Plan



Area Map



Energy Efficiency Graph



These particulars, whilst believed to be accurate are set out as a general outline only for guidance and do not constitute any part of an offer or contract. Intending purchasers should not rely on them as statements of representation of fact, but must satisfy themselves by inspection or otherwise as to their accuracy. No person in this firms employment has the authority to make or give any representation or warranty in respect of the property.