



Henrys Cottage

Northlew

EX20 3NZ



Offers in Excess of - £200,000



Henry's Cottage, Northlew, EX20 3NZ.



A characterful two-bedroom cottage nestled in the heart of the picturesque village of Northlew, offering spacious yet cosy interiors, a private rear courtyard, and a pretty front garden...

- Charming Two-Bedroom Cottage
- Sought-After Northlew Village
- Spacious Character Living Room
- Exposed Beams And Fireplace
- Bright Bay Window Feature
- Fitted Kitchen With Utility Area
- Two Comfortable Double Bedrooms
- Family Bathroom Upstairs
- Small Front Lawn Garden
- Enclosed Rear Courtyard
- Close To Local Amenities And Pub
- Council Tax Band - C
- EPC - TBC



Nestled in the heart of the picturesque village of Northlew, this delightful two-bedroom cottage is full of character and charm, offering a wonderful opportunity for those seeking village life with a strong sense of community. With a pretty front garden, an enclosed courtyard to the rear, and spacious yet cosy interiors, this home would make an ideal first-time buy, downsizing option, or investment.

On approach, the cottage immediately captures the eye with its traditional façade and welcoming red front door, complemented by a small lawned front garden bordered by established planting. Stepping inside, you are greeted by a generous living room, brimming with character features including exposed ceiling beams, a charming fireplace, and a large bay window that fills the space with natural light. This versatile room easily accommodates both living and dining areas, creating the perfect setting for family life or entertaining.

The kitchen is found to the rear of the property and is fitted with a range of units, offering good storage and workspace. Beyond the kitchen lies a useful utility area, with direct access to the rear courtyard, ideal for enjoying morning coffee or al fresco dining during the warmer months.



Upstairs, the cottage continues to impress with two comfortable double bedrooms, each with its own character and charm. The principal bedroom is a particularly inviting space with room for wardrobes, while the second bedroom provides flexibility as a guest room, home office, or nursery. A family bathroom serves both bedrooms, completing the first floor.

Externally, the property features a charming front garden that enhances the cottage's kerb appeal and offers a welcoming touch of greenery, setting the scene beautifully as you approach. This space provides the main outdoor area to enjoy, ideal for planting or simply relaxing in a pleasant setting. To the rear, there is a useful enclosed courtyard, low-maintenance and practical, offering additional outdoor space with security and peace of mind.

Situated within walking distance of the village square, local pub, and community amenities, this property offers the best of traditional village living while still being within easy reach of Okehampton and the A30 for wider connections.

With its blend of charm, character, and practical living spaces, this cottage presents a rare chance to purchase a home in one of Devon's most desirable rural locations.

Changing Lifestyles

Northlew is a charming village nestled in the heart of Devon, with a rich history and strong community spirit. Located near the town of Okehampton, it offers a quiet and scenic rural setting, making it a great location for those seeking peace and tranquillity. The village is renowned for its traditional character, including the notable St Thomas of Canterbury Church, which features a magnificent rood screen. Northlew is also associated with a local legend, which suggests the Devil met his demise here due to the cold—a story that adds a unique element to the village's character.

The community in Northlew is tight-knit, with active local clubs and events, including the village's efforts to preserve its historic telephone box and the impressive memorial to its fallen soldiers from the First World War. This memorial includes a world record-breaking avenue of poppies, making it a poignant feature of the area.

For those who appreciate a village with history, folklore, and a close community, Northlew offers a peaceful and attractive setting.



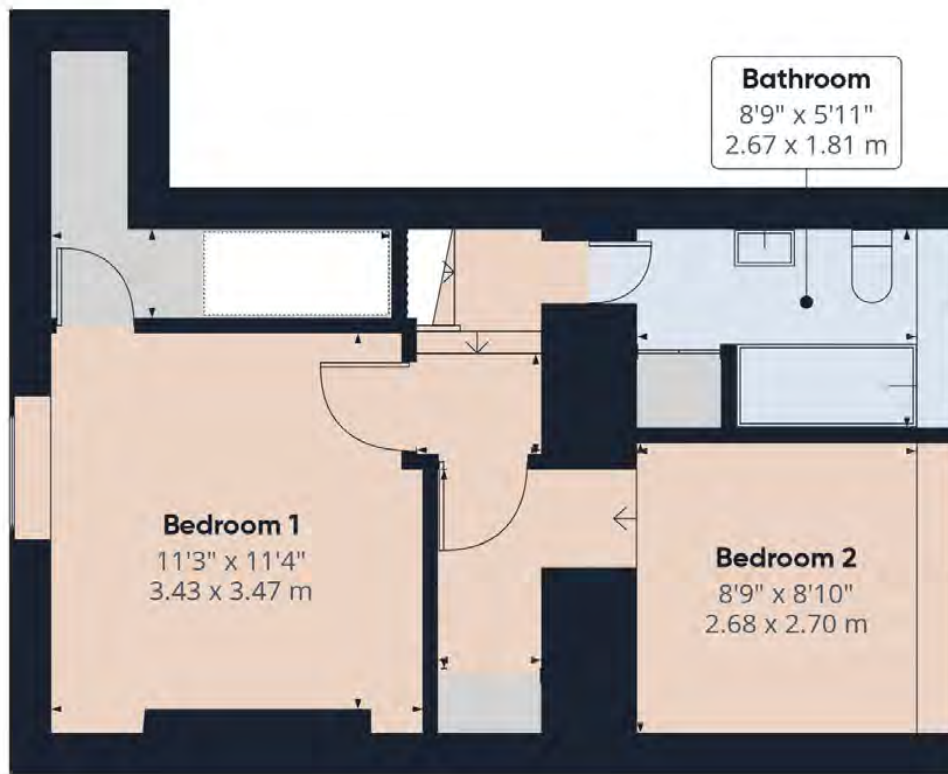
Please do not hesitate to contact the team at Bond Oxborough Phillips Sales & Lettings on **01837 500600** for more information or to arrange an accompanied viewing on this property.

Scan here for our Virtual Tour:





Floor 0



Have a property to sell or let?

If you are considering selling or letting your home, get in contact with us today on 01837 500600 to speak with one of our expert team who will be able to provide you with a free valuation of your home.

We have the facility to refer purchasers and vendors to conveyancing, mortgage advisors and Surveyors. It is your decision if you choose to deal with any of these companies however should you choose to use them we would receive a referral fee from them for recommending you. We will receive a referral fee between £50 - £300 depending on the company & individual circumstances. We have carefully selected these associates for the quality of their work and customer service levels.

Consumer Protection Regulations: We have not tested any apparatus, equipment, fixtures and fittings or services and so cannot verify that they are in working order or fit for the purpose. References to the Tenure of a Property are based on information supplied by the seller. We have not had sight of the Title Documents. A buyer is advised to obtain verification from their solicitor or surveyor. Floorplans shown are for guidance only and should not be relied upon. Items shown in photographs are NOT included unless specifically mentioned within these details. They may however be able by separate negotiation. You are advised to check the availability of this property before travelling any distance to view. Particulars are produced in good faith to the best of our knowledge and are set out as a general guide only.

PLEASE NOTE:

Before any sale is formally agreed, we have a legal obligation under the Money Laundering regulations and Terrorist Financing Act 2017 to obtain proof of your identity and of your address, take copies and retain on file for five years and will only be used for this purpose. We carry out this through a secure platform to protect your data. Each purchaser will be required to pay £29.99 upon an offer verbally being agreed to carry out these checks prior to the property being advertised as sale agreed.