



Bond
Oxborough
Phillips

Changing Lifestyles

12 Goldfinch Gardens
Tavistock
PL19 9FR

Asking Price - £160,000



Changing Lifestyles

01822 600700
Tavistock@boproperty.com

Nestled along the peaceful edge of Tavistock in the highly desirable Tiddy Brook Meadows, this beautifully maintained second-floor, two-bedroom flat presents an exceptional blend of comfort, style, and convenience. Accessed via a private entrance with a welcoming hallway, the flat immediately feels both secure and inviting.

The bright, open-plan living area is bathed in natural light, offering a warm and airy space perfect for relaxation or entertaining.

The modern kitchen/diner is thoughtfully designed with integrated appliances and generous space for dining.

Both bedrooms are well-proportioned and accommodate double beds with ease. The principal bedroom benefits from its own en-suite shower room, while a sleek, fully-fitted family bathroom serves the second bedroom and guests.

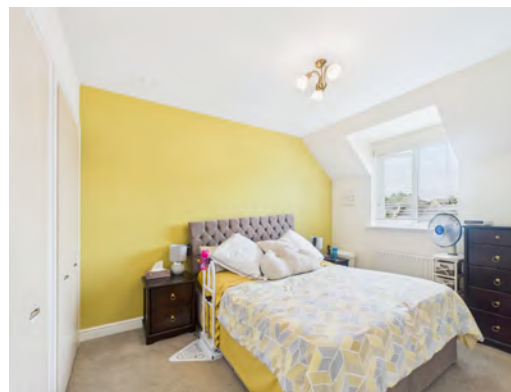
Further highlights include efficient gas central heating, double glazing throughout, and an allocated parking space—plus the added convenience of a garage.

Located within easy reach of Whitchurch and Tavistock amenities, schools, scenic countryside walks, and main transport routes including the A386, this flat strikes the ideal balance between tranquillity and accessibility.

Perfect for downsizers, first-time buyers, investors, or those seeking a low-maintenance yet stylish home, this property is a rare find in a sought-after setting. Arrange your viewing today to fully appreciate its appeal.



Changing Lifestyles



We have the facility to refer purchasers and vendors to conveyancing, mortgage advisors and Surveyors. It is your decision if you choose to deal with any of these companies however should you choose to use them we would receive a referral fee from them for recommending you. We will receive a referral fee between £50 - £300 depending on the company & individual circumstances. We have carefully selected these associates for the quality of their work and customer service levels.

Consumer Protection Regulations: We have not tested any apparatus, equipment, fixtures and fittings or services and so cannot verify that they are in working order or fit for the purpose. References to the Tenure of a Property are based on information supplied by the seller. We have not had sight of the Title Documents. A buyer is advised to obtain verification from their solicitor or surveyor. Floorplans shown are for guidance only and should not be relied upon. Items shown in photographs are NOT included unless specifically mentioned within these details. They may however be able by separate negotiation. You are advised to check the availability of this property before travelling any distance to view. Particulars are produced in good faith to the best of our knowledge and are set out as a general guide only.

Changing Lifestyles

01822 600700
Tavistock@bopproperty.com