



**JOYCE CLARKE**  
TAKING YOU HOME PROVINCEWIDE



**213 Parkmore, Craigavon, BT64 2AQ**

**£750**

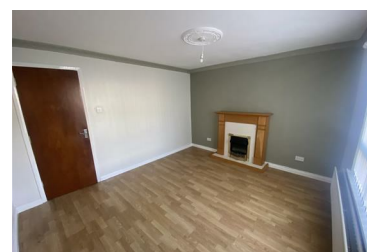


213 Parkmore is located within close proximity of Craigavon Hospital, Rushmere Shopping Centre, South Lake Leisure Centre and the M1.

The property has been fitted with new kitchen, bathroom, flooring and painted throughout. Consisting of lounge with decorative fireplace, kitchen with electrical appliances/open plan dining, ground floor WC, three bedrooms and bathroom with shower over bath. Externally the property has been freshly painted, the gardens are fully enclosed and low maintenance; the rear paved and the front stoned.

No pets  
None smokes

- Immaculate semi detached home
- Ground floor WC
- New bathroom with electric shower over bath
- PVC windows/doors
- New kitchen with electrical appliances/open plan dining
- Three bedrooms
- OFCH
- Enclosed low maintenance gardens (paved rear/stoned front)



2 West Street, Portadown, Co. Armagh, BT62 3PD

Tel: 02838 331111 Email: [lesley@joyceclarke.team](mailto:lesley@joyceclarke.team) <https://www.joyceclarke.team/>