



1 Crossways Northlew EX20 3NN



Guide Price - £260,000



1 Crossways, Northlew, EX20 3NN.

A semi-detached cottage style home situated opposite Northlew Village Square, boasting three bedrooms, a separate kitchen and dining room, a utility room and garage for additional storage...



- Beautiful Semi-Detached Cottage
- Heart Of Charming Northlew
- Traditional Character Modern Comfort
- Cosy Lounge Woodburning Stove
- Rustic Fireplace Period Features
- Separate Dining Room Connection
- Country Kitchen Utility Access
- Stylish Modern Family Bathroom
- Above-Garage Versatile Annex
- Quiet Location Village Amenities
- Strong Welcoming Community Spirit
- Council Tax Band - C
- EPC - D



Nestled in the heart of the charming and sought-after village of Northlew, this beautiful three-bedroom semi-detached cottage offers a rare opportunity to enjoy peaceful rural living without compromising on comfort or style. With its mix of traditional character and modern updates, this home is ideal for those seeking a welcoming country retreat or a permanent residence in a vibrant community setting.

The property is brimming with period charm, featuring exposed wooden beams, thick stone walls, and characterful windows that allow plenty of natural light to flood through. The cosy lounge is a standout space, centred around a traditional woodburning stove set within a rustic fireplace. This warm and inviting room is perfect for relaxing on cooler evenings, offering both visual appeal and practical warmth throughout the seasons.

A separate dining room connects seamlessly to the living room, offering the perfect setting for family meals or entertaining guests. The kitchen features wooden cabinetry, ample worktop space, and easy access to the utility room – combining country cottage aesthetics with day-to-day functionality.

Upstairs, three comfortable bedrooms provide plenty of space for a growing family, visiting guests, or the option to work from home. The stylish family bathroom has been tastefully modernised, boasting contemporary fittings, quality tiling, and a clean, calming finish – ideal for unwinding at the end of the day.

One of the property's most appealing features is the above-garage annex, offering a versatile space that could be used as a guest suite, home office, studio, or hobby room. It sits above the detached garage, which also provides ample additional storage.

Located in a quiet position within Northlew, the cottage benefits from the village's peaceful atmosphere while remaining just a short walk from local amenities, including a popular pub, primary school, and community events. The village is known for its strong community spirit, making it a welcoming place for both new residents and long-time locals.

Whether you're looking for a weekend escape or a forever home, this property offers an exceptional combination of charm, practicality, and location. The cottage is listed under Council Tax Band C and holds an EPC rating of D.



Changing Lifestyles

Northlew is a charming village nestled in the heart of Devon, with a rich history and strong community spirit. Located near the town of Okehampton, it offers a quiet and scenic rural setting, making it a great location for those seeking peace and tranquillity. The village is renowned for its traditional character, including the notable St Thomas of Canterbury Church, which features a magnificent rood screen. Northlew is also associated with a local legend, which suggests the Devil met his demise here due to the cold—a story that adds a unique element to the village's character.

The community in Northlew is tight-knit, with active local clubs and events, including the village's efforts to preserve its historic telephone box and the impressive memorial to its fallen soldiers from the First World War. This memorial includes a world record-breaking avenue of poppies, making it a poignant feature of the area.

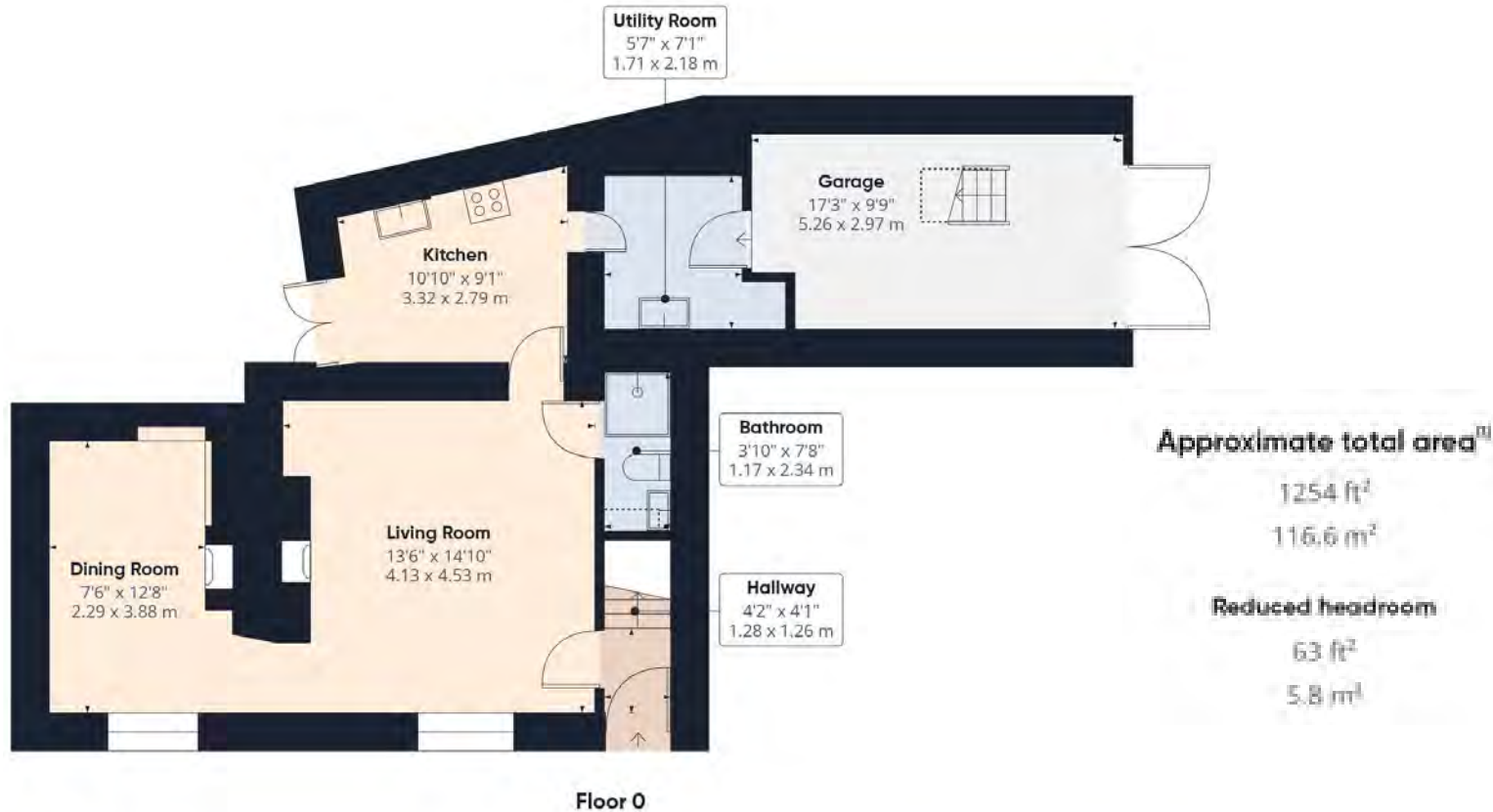
For those who appreciate a village with history, folklore, and a close community, Northlew offers a peaceful and attractive setting.



Please do not hesitate to contact
the team at
Bond Oxborough Phillips
Sales & Lettings on
01837 500600
for more information or to
arrange an accompanied viewing
on this property.

Scan here for
our Virtual Tour:





Have a property to sell or let?

If you are considering selling or letting your home, get in contact with us today on 01837 500600 to speak with one of our expert team who will be able to provide you with a free valuation of your home.

We have the facility to refer purchasers and vendors to conveyancing, mortgage advisors and Surveyors. It is your decision if you choose to deal with any of these companies however should you choose to use them we would receive a referral fee from them for recommending you. We will receive a referral fee between £50 - £300 depending on the company & individual circumstances. We have carefully selected these associates for the quality of their work and customer service levels.

Consumer Protection Regulations: We have not tested any apparatus, equipment, fixtures and fittings or services and so cannot verify that they are in working order or fit for the purpose. References to the Tenure of a Property are based on information supplied by the seller. We have not had sight of the Title Documents. A buyer is advised to obtain verification from their solicitor or surveyor. Floorplans shown are for guidance only and should not be relied upon. Items shown in photographs are NOT included unless specifically mentioned within these details. They may however be able by separate negotiation. You are advised to check the availability of this property before travelling any distance to view. Particulars are produced in good faith to the best of our knowledge and are set out as a general guide only.

PLEASE NOTE:

Before any sale is formally agreed, we have a legal obligation under the Money Laundering regulations and Terrorist Financing Act 2017 to obtain proof of your identity and of your address, take copies and retain on file for five years and will only be used for this purpose. We carry out this through a secure platform to protect your data. Each purchaser will be required to pay £29.99 upon an offer verbally being agreed to carry out these checks prior to the property being advertised as sale agreed.