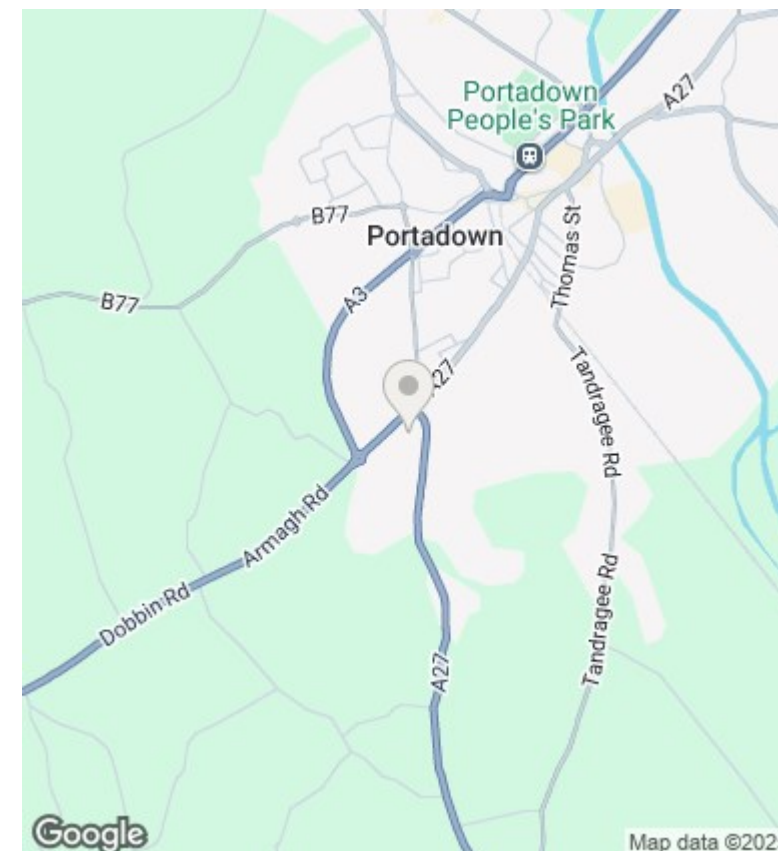
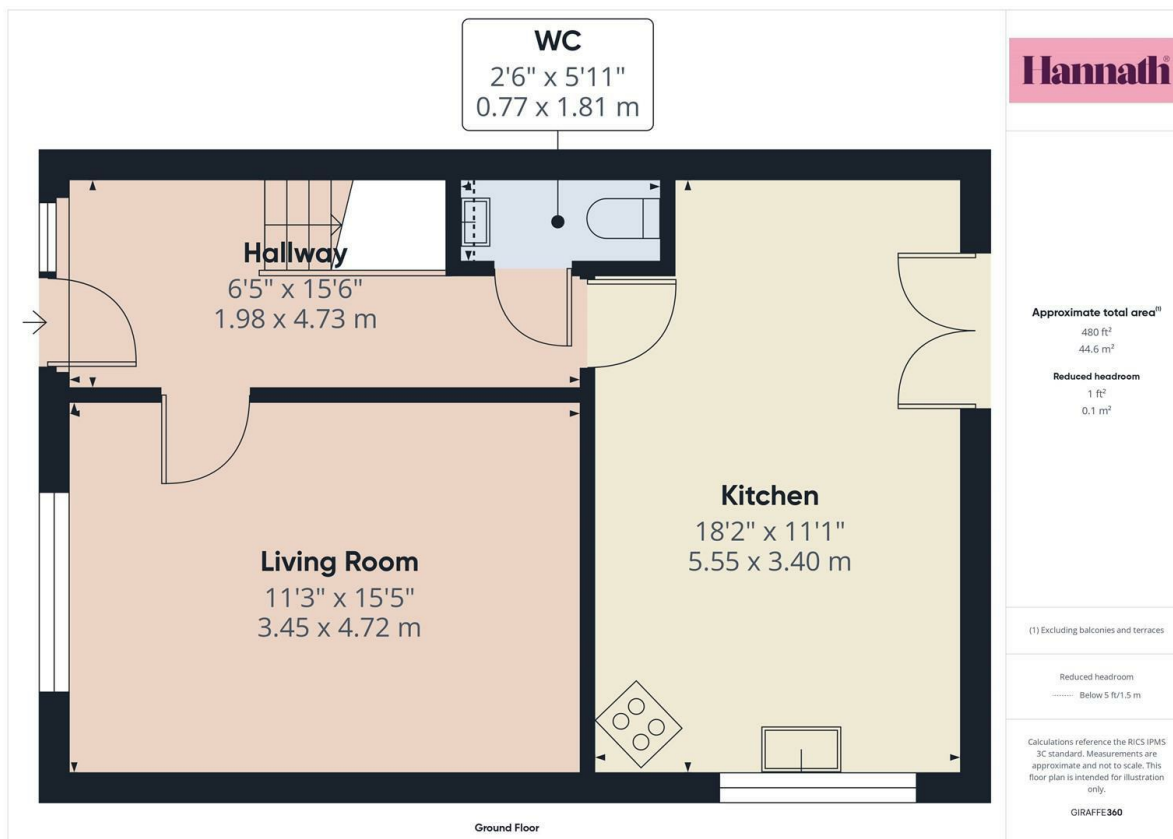




19 Inglewood Lodge, Portadown, Craigavon, County Armagh, Asking Price £154,950

- Three bedroom semi detached family home
- Three well proportioned bedrooms
- Downstairs w.c.
- Situated near Craigavon Area hospital, Rushmere shopping centre, Craigavon Omniplex, South Lake Leisure Centre, Portadown town centre, schools, restaurants, nightlife and other local amenities as well as M1 interchange.
- Spacious living room that enjoys plenty of natural light
- Four piece family bathroom suite
- Private and secure rear garden
- Viewing is strictly via agent
- Kitchen / Dining with an array of fitted units and integrated appliances
- PVC double glazed windows and doors
- Popular residential location



Directions

Viewings

Viewings by arrangement only. Call 02838 399911 to make an appointment.

Council Tax Band

Northern Ireland

EPC Rating:

Energy Efficiency Rating		
	Current	Potential
Very energy efficient - lower running costs		
(92 plus) A		
(81-91) B		
(69-80) C		
(55-68) D		
(39-54) E		
(21-38) F		
(1-20) G		
Not energy efficient - higher running costs		
Northern Ireland	EU Directive 2002/91/EC	