



111 Main Road , Portavogie, BT22 1EL

"And now for something completely different! If you like properties that are different, charming, quirky but full of character then this step this way."

Where to start? The property has undergone significant but "light touch" modernisation by the current owner and retains much of its "olde worlde" cottage charm but with modern elements. It is currently used as a single storey dwelling plus a separate, intere-connected, 2 storey apartment (with rental potential) but is extremely versatile with two bathrooms and two kitchens.

The main dwelling is currently set up as a formal lounge, with feature multi fuel stove, and open plan kitchen/living/dining room, a double bedroom and a bathroom. The apartment currently comprises a kitchen/diner, a bathroom, a bedroom and a 1st floor lounge/additional bedroom.

Externally there are hints of "The Good Life" with chicken coup, fruit trees, pond, mature shrubs and pebbled parking area. It benefits from uPVC double glazing and oil fired central heating.

"It's not going to suit everyone but I can guarantee that you won't see another just like it anytime soon so, book a viewing, and see for yourself what 111 Main Road has to offer - It could be your ideal home".

Offers Around £179,950

111 Main Road

, Portavogie, BT22 1EL



- Charming & unique detached cottage
- Kitchen/living/dining room
- 1st floor lounge/bedroom with countryside views
- uPVC double glazing - Oil fired central heating
- A single detached cottage or dwelling with integral apartment
- Lounge with feature stone walling and multi fuel stove
- Second kitchen in apartment
- Up to 3 bedrooms
- Two bathrooms
- Gardens to front, side & rear

Entrance

Main dwelling

Kitchen/living/dining room

21'1x14 (6.43mx4.27m)

Lounge

18'2x13 (5.54mx3.96m)

Bedroom

17'7x16'4 (5.36mx4.98m)

Bathroom 1

7'11x6'4 (2.41mx1.93m)

Apartment

Kitchen/diner

16'9x10'8 (5.11mx3.25m)

Bathroom 2

11'5x4'11 (3.48mx1.50m)

Bedroom

11'5x7'2 (3.48mx2.18m)

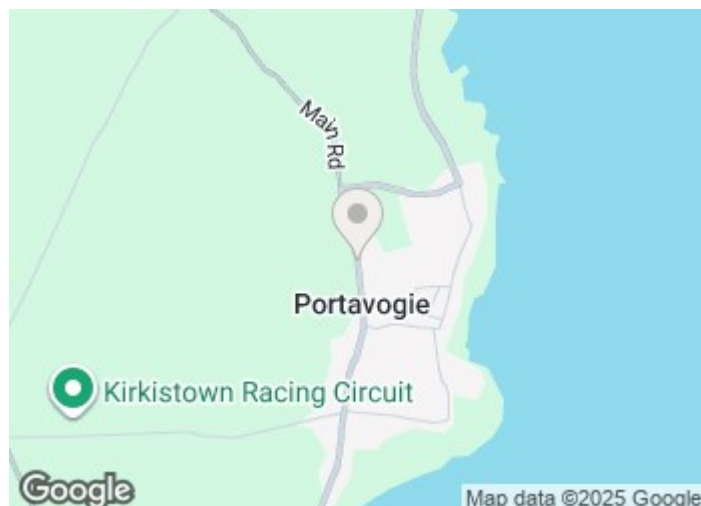
1st floor Lounge/Bedroom

17'5x10'9 (5.31mx3.28m)

Outside

Tenure

Property misdescriptions

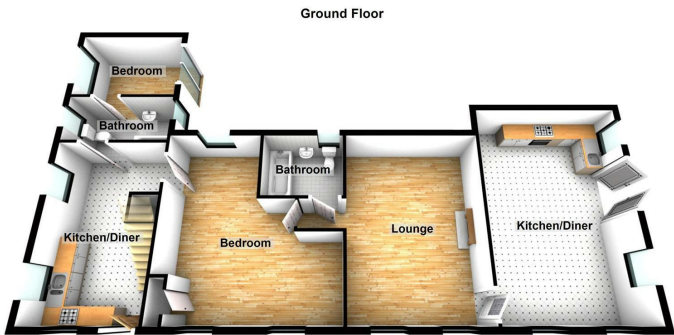


Directions

Located on Main Road in Portavogie close to Warnocks Road.



Floor Plan



First Floor



These particulars, whilst believed to be accurate are set out as a general outline only for guidance and do not constitute any part of an offer or contract. Intending purchasers should not rely on them as statements of representation of fact, but must satisfy themselves by inspection or otherwise as to their accuracy. No person in this firms employment has the authority to make or give any representation or warranty in respect of the property.

