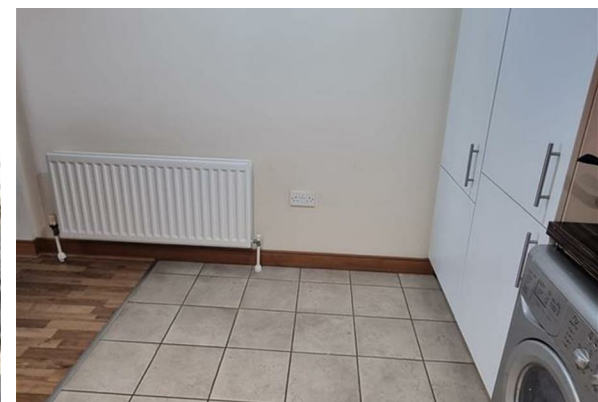




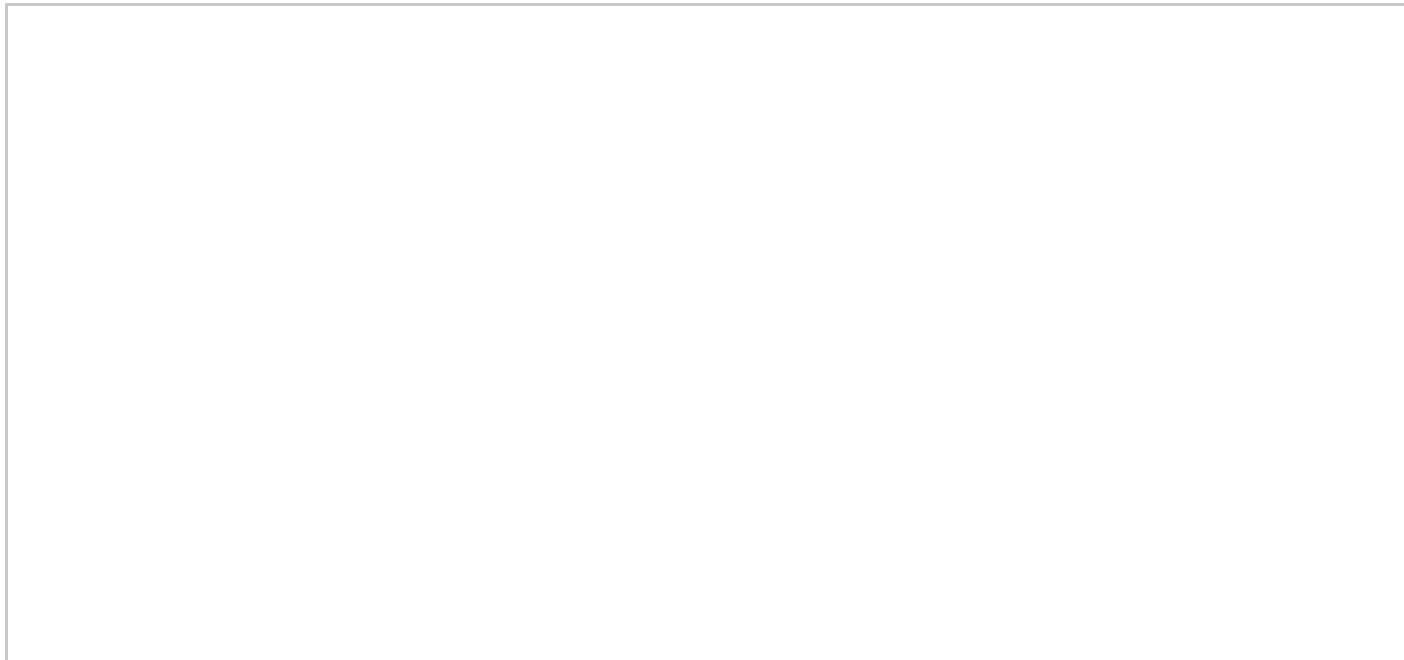
TO LET

Apartment 115, 20 Wellwood Street, Victoria Place, Belfast, County
Antrim, BT12 5GE
£925 Per month



**LAVERY
MITCHELL**

- Beautifully presented 1-bedroom apartment in Victoria Place
- Spacious double bedroom with ample storage
- Contemporary fitted kitchen with integrated appliances
- Bright, airy living room with access to private balcony
- Modern bathroom with shower over full-sized bathtub
- Secure underground car parking space included
- Secure door entry system for added safety
- Prime location just minutes from Belfast City Centre
- Walking distance to Botanic, shops, cafes, and nightlife
- Ideal for professionals or couples seeking city living



Directions

THE PROPERTY

Welcome to Apt 115, Victoria Place – a beautifully presented 1-bedroom apartment. This modern property offers convenience, comfort, and city living at its finest.

Situated just a short stroll from Belfast City Centre and the vibrant Botanic area, this apartment is ideal for professionals seeking easy access to work, public transport, and the city's buzzing social scene.

This well-maintained apartment is perfect for young professionals or couples looking to enjoy a modern lifestyle in a convenient central location. Don't miss out on this opportunity to live in the heart of Belfast.

The property features a spacious double bedroom with ample storage, a contemporary fitted kitchen with integrated appliances, a bright and airy living room with access to a private balcony and a modern bathroom with shower over full-sized bathtub. Additional benefits include one secure underground parking space and a secure door entry system into the building.

SITUATION

Wellington Park Business Centre, 3 Wellington Park, Belfast BT9 6DJ.
Unit C11 The Business Centre, 80-82 Rainey Street, Magherafelt, BT45 5AJ.
Tel: 028 95 575555 Email: info@laverymitchell.com www.laverymitchell.com