

The Courtyard, Winkleigh EX19 8HZ



Guide Price - £425,000



Changing Lifestyles

01837 500600

The Courtyard, Winkleigh, EX19 8HZ.

One of four properties split from a manor house, fully renovated with a modernised touch boasting 4 bedrooms on the outskirts of Winkleigh...



- Impressive Manor House Conversion
- Offering Four Spacious Bedrooms
- Character Features w/Modern Touches
- Generous Living Room In Each
- Additional Hobbies Or Study Room
- Beautiful Private Garden
- Peaceful Winkleigh Village Location
- Off-Road Parking For Multiple Vehicles
- Countryside Views And Rural Ambience
- Large Kitchen Diner
- Designated Dressing Room
- Inglenook Fireplace
- En-Suite for Convenience
- Council Tax - E
- EPC - D



A Unique Opportunity to Own a Distinctive Residence Within an Impressive Manor House Conversion in the Sought-After Village of Winkleigh

Set within the picturesque countryside of Mid Devon, this remarkable home forms part of an exclusive manor house conversion. Carefully and sympathetically restored, the property seamlessly blends period charm with modern living, offering a unique combination of elegance, comfort, and practicality.

Offering four generously proportioned bedrooms, the home caters perfectly to families, those seeking additional guest space, or even buyers working from home. The principal bedroom benefits from a private en-suite, providing added convenience, while a designated dressing room enhances the sense of luxury and thoughtful design.

The heart of the home lies in the large open-plan kitchen diner – a bright and sociable space ideal for both family meals and entertaining guests. Period features have been retained throughout, most notably the beautiful inglenook fireplace, adding warmth and character to the main living space. A generous living room and a separate hobbies or study room provide versatile areas for relaxation, creativity, or work.

To the rear of the property lies a private, enclosed garden – a tranquil space ideal for outdoor dining, gardening, or simply enjoying the peaceful surroundings. The home also benefits from off-road parking for multiple vehicles, a rare and practical feature for a property of this style and age.

Located in the charming and well-connected village of Winkleigh, residents can enjoy both rural tranquillity and access to local amenities including shops, pubs, a school, and community facilities. The area is well-served by convenient transport links, making it easy to reach Exeter, Okehampton, and beyond.

This home is perfect for buyers looking for a slice of countryside living with all the comforts of a modern interior. Whether you're seeking a family base, a peaceful retreat, or an investment opportunity, this property offers flexibility, character, and enduring appeal.

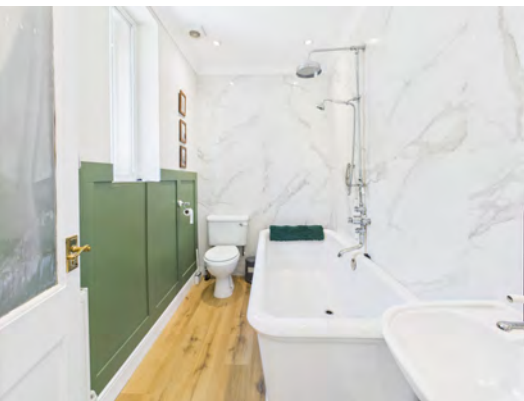
Viewings are highly recommended to appreciate the full charm and scope of this exceptional home.



Changing Lifestyles

Winkleigh is a charming village located in North Devon, rich in history and nestled amidst picturesque countryside. Dating back to Saxon times, the village has retained much of its rural charm with a lovely village square, surrounded by traditional white cottages. With a population of around 1,400, Winkleigh maintains a close-knit community atmosphere, offering a range of local amenities including a village shop, a pub, and a primary school. The surrounding countryside offers plenty of opportunities for outdoor activities, such as hiking and cycling, with scenic routes that provide stunning views of the Devon landscape.

The village is also well-connected, with easy access to nearby towns like Barnstaple and Bideford, making it ideal for those seeking a peaceful, rural lifestyle without sacrificing convenience. In addition, Winkleigh hosts various cultural events, including the traditional "Burning the Ashen Faggot," reflecting the village's long-standing heritage. For those looking for a blend of history, community, and natural beauty, Winkleigh is an ideal place to call home.



Please do not hesitate to contact
the team at
Bond Oxborough Phillips
Sales & Lettings on
01837 500600
for more information or to
arrange an accompanied viewing
on this property.

Scan here for
our Virtual Tour:





Have a property to sell or let?

If you are considering selling or letting your home, get in contact with us today on 01837 500600 to speak with one of our expert team who will be able to provide you with a free valuation of your home.

We have the facility to refer purchasers and vendors to conveyancing, mortgage advisors and Surveyors. It is your decision if you choose to deal with any of these companies however should you choose to use them we would receive a referral fee from them for recommending you. We will receive a referral fee between £50 - £300 depending on the company & individual circumstances. We have carefully selected these associates for the quality of their work and customer service levels.

Consumer Protection Regulations: We have not tested any apparatus, equipment, fixtures and fittings or services and so cannot verify that they are in working order or fit for the purpose. References to the Tenure of a Property are based on information supplied by the seller. We have not had sight of the Title Documents. A buyer is advised to obtain verification from their solicitor or surveyor. Floorplans shown are for guidance only and should not be relied upon. Items shown in photographs are NOT included unless specifically mentioned within these details. They may however be able by separate negotiation. You are advised to check the availability of this property before travelling any distance to view. Particulars are produced in good faith to the best of our knowledge and are set out as a general guide only.

PLEASE NOTE:

Before any sale is formally agreed, we have a legal obligation under the Money Laundering regulations and Terrorist Financing Act 2017 to obtain proof of your identity and of your address, take copies and retain on file for five years and will only be used for this purpose. We carry out this through a secure platform to protect your data. Each purchaser will be required to pay £29.99 upon an offer verbally being agreed to carry out these checks prior to the property being advertised as sale agreed.