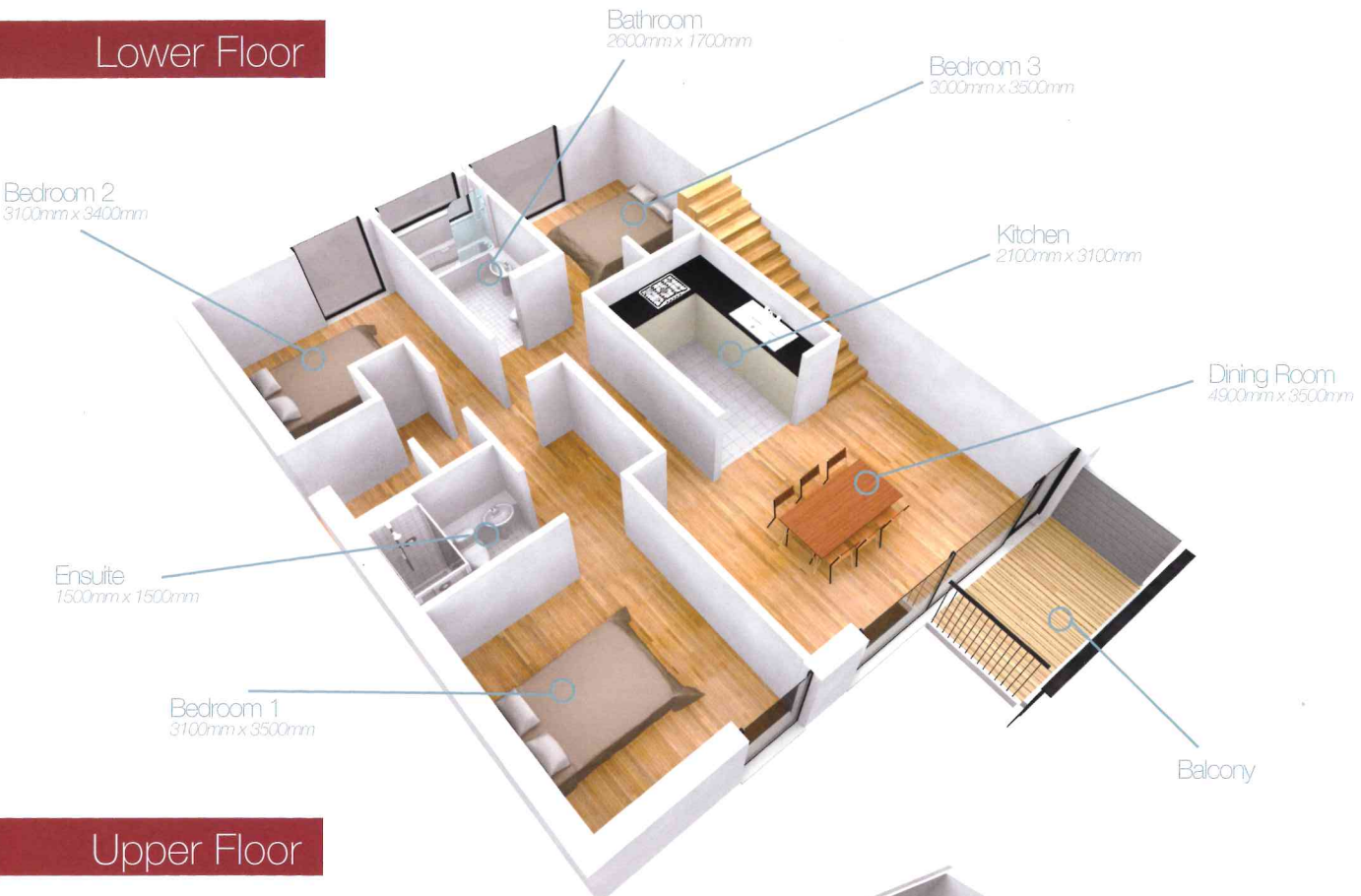
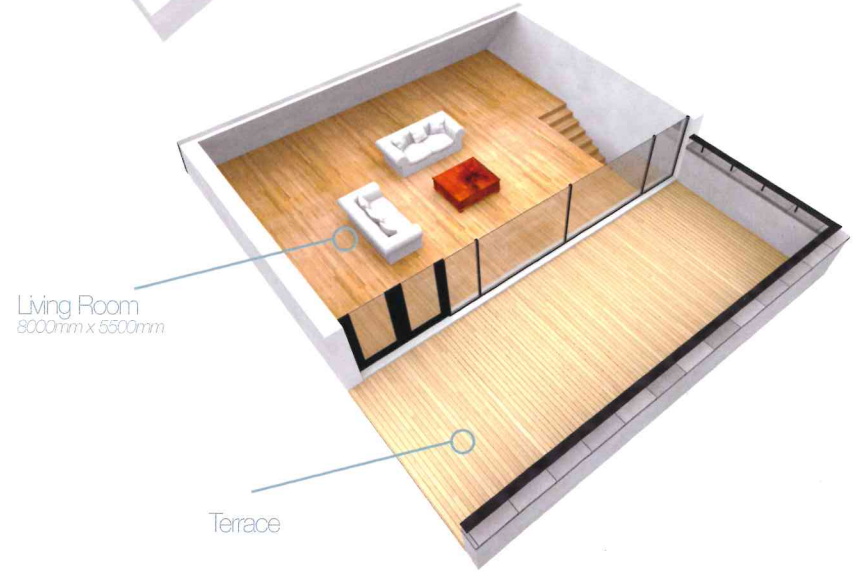


Duplex Penthouse 3 Bedroom

Lower Floor

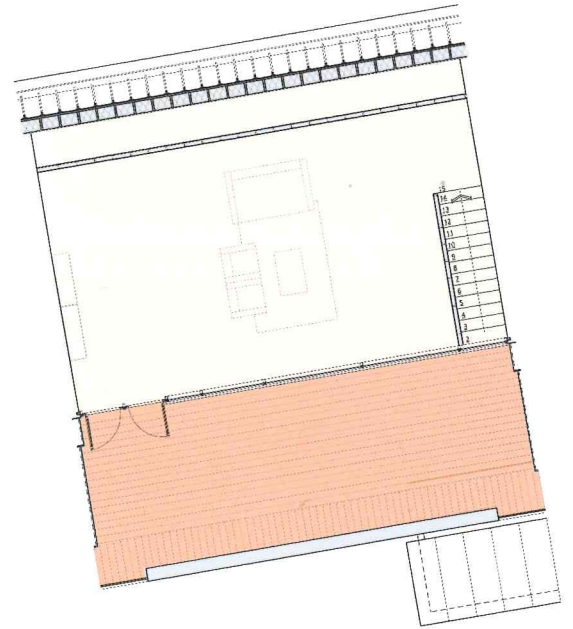


Upper Floor

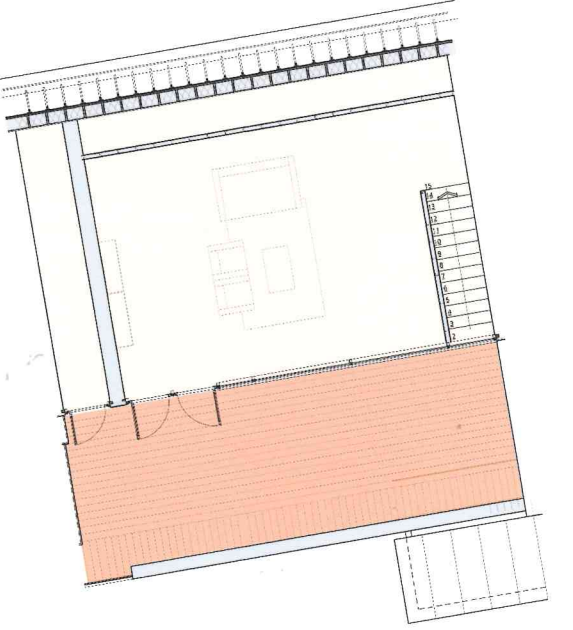


Upper Floor Variations

17(i) (135 Sq.m.)



17(ii) (127 Sq.m.)



DUPLEX PENTHOUSE

The Duplex Penthouse is on two levels. The lower level comprises of a kitchen and a dining room, three bedrooms (one ensuite) and a bathroom. The upper level is accessed by an internal staircase and is an open plan living area of approx 22 sq m opening onto a very large south facing balcony of approx. 17.5 Sq m.

The Duplex Penthouse kitchen is upgraded to include black granite worktops to contrast the hi-gloss porcelain cream doors.

Type 17 only downstairs – type 17i to 17ii upstairs

6C	WILLOW	2nd & 3rd Floor	upper floor type 17ii
6D	WILLOW	2nd & 3rd Floor	upper floor type 17i
6E	WILLOW	2nd & 3rd Floor	upper floor type 17ii
5C	WILLOW	2nd & 3rd Floor Mirrored	upper floor type 17i
5D	WILLOW	2nd & 3rd Floor Mirrored	upper floor type 17i
5E	WILLOW	2nd & 3rd Floor Mirrored	upper floor type 17i
5A	MAPLE	2nd & 3rd Floor Mirrored	upper floor type 17i

6A	MAPLE	2nd & 3rd Floor	upper floor type 17ii
3B	MAPLE	2nd & 3rd Floor Mirrored	upper floor type 17i
8A	LIME	2nd & 3rd Floor Mirrored	upper floor type 17ii
5B	LIME	2nd & 3rd Floor	upper floor type 17i
6B	LIME	2nd & 3rd Floor Mirrored	upper floor type 17i
6C	LIME	2nd & 3rd Floor	upper floor type 17i
5C	LIME	2nd & 3rd Floor Mirrored	upper floor type 17i
8A	BEECH	2nd & 3rd Floor	upper floor type 17ii

