

Sir Richard Wallace Walk, Lisburn,
County Antrim, BT28

Asking Price: £130,000
Leasehold

 **Reeds Rains**

[reedsrains.co.uk](https://www.reedsrains.co.uk)

Sir Richard Wallace Walk, Lisburn, County Antrim, BT28

Asking Price: £130,000 Leasehold

Council Tax Band:
EPC Rating: TBC

Upper Floor Apartment with 2 bedrooms, located in a sought-after area. This property boasts a spacious living area, modern kitchen, and stunning views towards Mourne Mountains.

Close to amenities and excellent transport links. Ideal for first-time buyers or investment opportunity. Viewing highly recommended.

Communal Entrance Hall

Stairs to top floor.

Entrance Hall

Built-in cloaks cupboard.

Living Room/ Kitchen

19'7" x 10'11" (5.97m x 3.33m)

Luxury range of high and low level units, laminate work tops, built -in gas hob and electric oven, single drainer stainless steel sink unit, built-in fridge/ freezer, plumbed for washing machine, gas fired boiler, laminate flooring, open to living area, with views towards Mourne Mountains.

Bedroom1

15' x 10'10" (4.57m x 3.104m)

Dormer window

En-Suite

Separate shower cubicle with controlled shower unit, wash hand basin, low level WC, wall and floor tiling, velux window, extractor fan.

Bedroom 2

9'5" x 9'5" (2.87m x 2.87m)

Velux window.

Bathroom

White suite comprising panelled bath, wash hand basin, low level WC, wall and floor tiling, extractor fans.

Communal Gardens/ Car parking

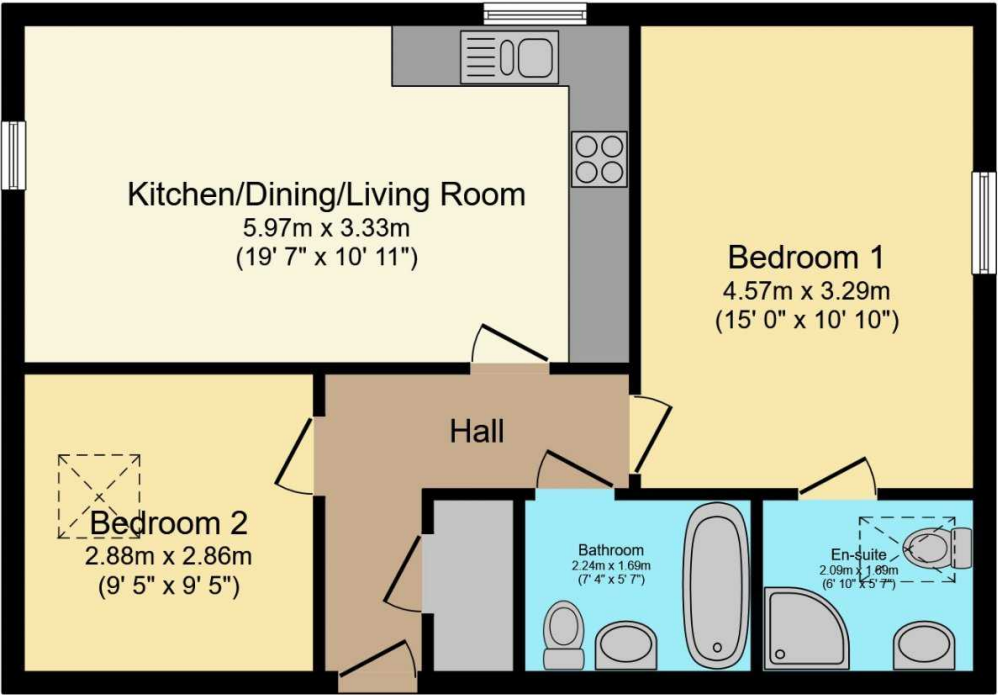
The Reeds Rains branches at 350 Upper Newtownards Road, Ballyhackamore, Belfast, N Ireland BT4 3EX, 18 Main Street, Bangor, Co Down, N Ireland BT20 5AG, Somerset House, 240-242 Ormeau Road, Belfast, Co Antrim, N Ireland BT7 2FZ, 10 High Street, Carrickfergus, Co Antrim, N Ireland BT38 7AF, 8/8A Carnmoney Road, Glengormley, County Antrim, N Ireland BT36 6HN, 14/16 Market Street, Lisburn, County Antrim , N Ireland BT28 1AB and 2 Frances Street, Newtownards, County Down, N Ireland BT23 4JA are operated by Favsko NI Limited which is independently owned and operated under a Licence from Reeds Rains Limited.

All Measurements
All Measurements are Approximate.

Laser Tape Clause
All measurements have been taken using a laser tape measure and therefore, may be subject to a small margin of error.

Floorplan Clause
Measurements are approximate. Not to Scale. For illustrative purposes only.

For full EPC please contact the branch.



Total floor area 59.6 sq.m. (642 sq.ft.) approx

This floor plan is for illustrative purposes only. It is not drawn to scale. Any measurements, floor areas (including any total floor area), openings and orientation are approximate. No details are guaranteed, they cannot be relied upon for any purpose and they do not form part of any agreement. No liability is taken for any error, omission or misstatement. A party must rely upon its own inspection(s).
Powered by www.focalagent.com

We may refer you to recommended providers of ancillary services such as Conveyancing, Mortgages, Insurance and Surveying. We may receive a referral fee for recommending their services. You are not under any obligation to use the services of the recommended provider, which may also be an associated company of Reeds Rains.

Other important information which you will need to know about this property can be found at reedsrains.co.uk