



6 MEADOW CLOSE

NEWTOWNARDS BT22 2NS

Offers Around

£112,000



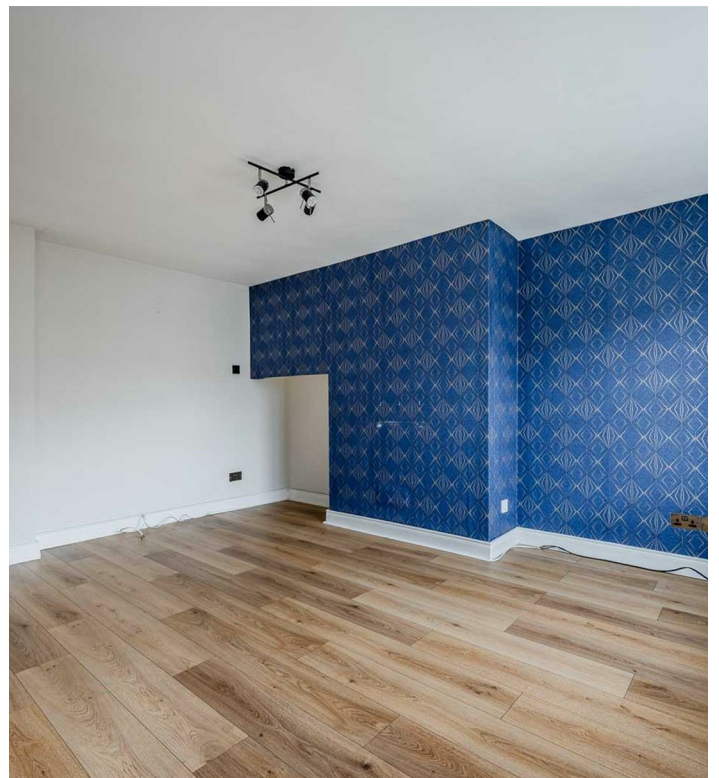
HOUSE - TERRACED | 4  | 1  | 1 

Add text here

Nestled in the picturesque coastal town of Ballywalter, this beautifully presented mid-terrace property offers an excellent opportunity for first-time buyers, young professionals, investors, or those looking to downsize. With its prime location just a short stroll from the bustling town centre, local shops, schools, and the stunning Ballywalter beachfront, this home combines convenience with coastal charm.

Step inside to find a bright and inviting living room with stylish laminate wooden flooring, leading to a spacious kitchen with a casual dining area, perfect for entertaining. The ground floor also boasts a versatile double bedroom and a three-piece white suite bathroom. Upstairs, you'll find three well-proportioned bedrooms and a fully tiled bathroom with a contemporary three-piece suite. Additional benefits include oil-fired central heating, uPVC double-glazed windows, a handy pantry, and under-stairs storage.

With demand expected to be high, early viewing is highly recommended to fully appreciate everything this wonderful home has to offer. Don't miss out, make this charming Ballywalter property yours today!



ROOM DETAILS

Entrance

Wheelchair friendly access ramp

RECEPTION

HALL:

Composite front door to reception hallway

LIVING ROOM:

Feature wallpapered wall, laminate wood effect floor, with spandrel storage

KITCHEN:

Range of high and low Shaker style units with wood effect work surfaces, single drainer stainless steel sink unit, laminate tiled floor effect, part tiled walls. Plumbed for

washing machine and space for a cooker with extractor fan above.

HALLWAY:

Laminate wood effect flooring with a wooden effect composite door leading to outside space

Storage

Built-in shelving

BEDROOM (4):

Laminate wood effect flooring

BATHROOM:

Three piece suite comprising panelled bath, pedestal procelain wash hand basin and low flush WC.

Ground Floor

STAIRS TOO..

LANDING:

Access to roofspace

BEDROOM (1):

Carpeted flooring with built-in storage

BEDROOM (2):

Laminate wood effect flooring

BEDROOM (3):

Laminate wood effect flooring

BATHROOM:.

Three piece suite comprising tiled panelled bath and

electric shower, pedestal procelain wash hand basin and low flush WC.

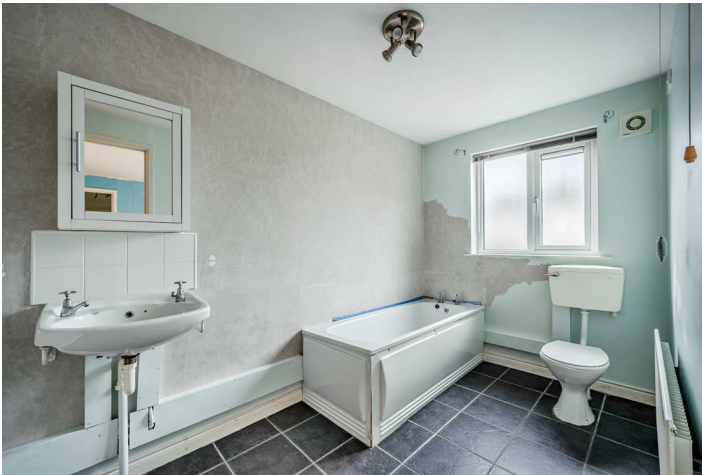
Outside

Fully enclosed rear yard with oil fired boiler, PVC oil tank and outside tap

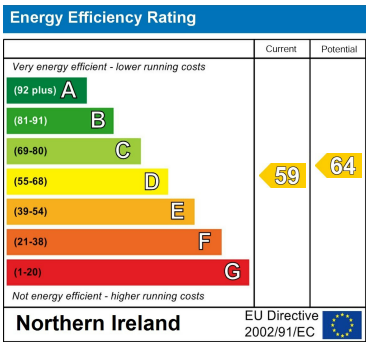


DIRECTIONS

From Ballywalter Main Street, turn onto Meadow Park.
Continue straight, then turn left into Meadow Close.
Number 6 is on the right.



THE LOCAL AREA



Scan QR code for more details and to arrange a viewing.

OUR BRANCHES

B' FAST (028) 9065 3333 H'WOOD (028) 9042 8888 BANGOR (028) 9131 3833 D'DEE (028) 9188 8881 COMBER (028) 9187 1212

property@johnminnis.co.uk

JOHNMINNIS.CO.UK

