



73 Slievenagarragh

Hilltown, Newry, BT34 5BF

Offers Over £274,950

Located in the scenic area of Slievenagarragh, Hilltown, Newry, this charming home offers a perfect mix of comfort and convenience. Just 15 minutes from the City of Newry, it allows you to enjoy the peace of the countryside without giving up easy access to shops, schools, and transport links.

The property enjoys beautiful views of the Mourne Mountains, creating a stunning natural backdrop that adds to its appeal. Whether you love the outdoors or simply enjoy a quiet moment surrounded by nature, the area offers plenty of space to explore and unwind.

Inside, the home has a warm, welcoming feel—ideal for families or anyone looking for a quiet place to settle. With daily essentials close by and great connections to the surrounding area, it's a location that balances rural charm with everyday practicality.

This is a great opportunity for anyone seeking a more relaxed lifestyle without being too far from the action. With its beautiful setting and convenient location, this home in Slievenagarragh is sure to catch the eye of those who value both comfort and nature.

73 Slievenagarragh

Hilltown, Newry, BT34 5BF



- Off Street Parking
 - Corner site
- Oil Central Heating
- Large garden area

ADDITIONAL INFORMATION

Accommodation in brief

Ground Floor

Entrance Hallway

10'7" x 16'5" (3.25m x 5.02m)

Living Room

13'0" x 16'5" (3.97m x 5.02m)

Kitchen/ Dinning Room

23'8" x 10'11" (7.22m x 3.35m)

Utility

7'5" x 9'0" (2.27m x 2.76m)

Bedroom 1

11'7" x 12'2" (3.55m x 3.71m)

Bathroom

7'5" x 9'1" (2.27m x 2.79m)

First Floor

Bedroom 2

13'1" x 11'7" (3.99m x 3.54m)

Bedroom 3

14'2" x 10'0" (4.32m x 3.05m)

Bedroom 4

10'11" x 8'2" (3.35m x 2.49m)

W.C

6'6" x 9'9" (2.00m x 2.98)

Exterior

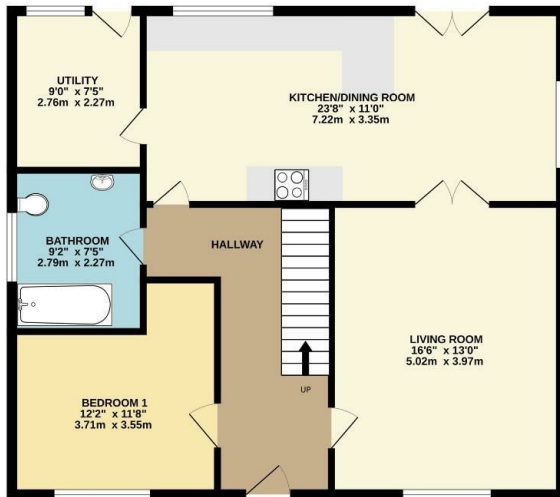


Energy Efficiency Rating		
	Current	Potential
Very energy efficient - lower running costs		
(92 plus) A		
(81-91) B		
(69-80) C		
(55-68) D	63	66
(39-54) E		
(21-38) F		
(1-20) G		
Not energy efficient - higher running costs		
Northern Ireland		EU Directive 2002/91/EC

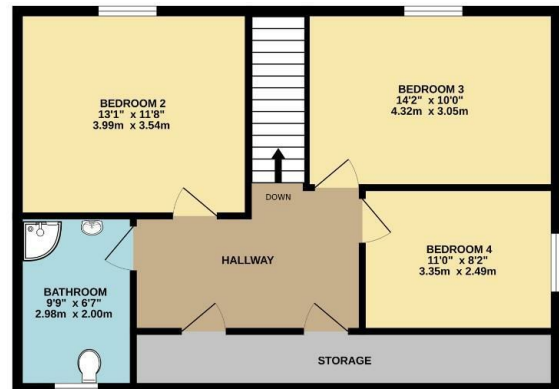


Floor Plan

GROUND FLOOR
855 sq.ft. (79.4 sq.m.) approx.



1ST FLOOR
654 sq.ft. (60.7 sq.m.) approx.



TOTAL FLOOR AREA : 1508 sq.ft. (140.1 sq.m.) approx.

Whilst every attempt has been made to ensure the accuracy of the floorplan contained here, measurements of doors, windows, rooms and any other items are approximate and no responsibility is taken for any error, omission or mis-statement. This plan is for illustrative purposes only and should be used as such by any prospective purchaser. The services, systems and appliances shown have not been tested and no guarantee as to their operability or efficiency can be given.
Made with Metropix ©2025

We look forward to working with you...



We get there together

Our experienced and trusted team have assisted 1000's of people with buying, selling and letting.



We're here for you

Client care is at the very heart of what we do. We will guide and support you every step of the way.



Always close by

With multiple offices and a leading marketing team, we will make sure that you get the very best result.

Newry:
30 Monaghan Street, Newry, Co.Down, BT35 6AA
T: 028 300 50633 E: newry@bradleyjni.com

Warrenpoint:
25 Duke Street, Warrenpoint, Co.Down, BT34 3JY
T: 028 417 73777 E: warrenpoint@bradleyjni.com

Rostrevor:
14 Bridge Street, Rostrevor, Co.Down, BT34 3BG
T: 028 417 39999 E: rostrevor@bradleyjni.com

Belfast:
55-59 Adelaide Street, Belfast, Co.Antrim, BT2 8FE
T: 028 962 09909 E: belfast@bradleyjni.com

These particulars, whilst believed to be accurate are set out as a general outline only for guidance and do not constitute any part of an offer or contract. Intending purchasers should not rely on them as statements of representation of fact, but must satisfy themselves by inspection or otherwise as to their accuracy. No person in this firm's employment has the authority to make or give any representation or warranty in respect of the property.