



Bond
Oxborough
Phillips

Changing Lifestyles

6 Abbeyford Court Okehampton EX20 1TU



BRITISH
PROPERTY
AWARDS

2023
★★★★★

GOLD WINNER

ESTATE AGENT
IN OKEHAMPTON



Offers in Excess of - £140,000



Changing Lifestyles

01837 500600

6 Abbeyford Court, Okehampton, EX20 1TU.

A brilliant investment opportunity in Okehampton, with a tenant in situ. Offering two bedrooms and open living spaces...



- Current Investment Property
- First Time Buyer Property
- Two Double Bedrooms
- Living / Dining Room
- Modern Kitchen
- Family Bathroom
- Short Walk to Town
- Parking Available
- Current Rental Yield 4.3%
- NO ONWARD CHAIN
- EPC - D



Description;

A perfect opportunity for investors, or first time buyers who are looking to get onto the ladder for the first time!

6 Abbeyford Court is a well presented two bedroom flat located on the second floor of this popular development, within touching distance of Okehampton Hospital.

With a simple layout and spacious bedrooms, no6 also offers a large living dining room, and a useful kitchen area that offers space for white goods. There is also a family bathroom located between bedroom two and the kitchen space.

A dedicated parking space also comes with the property.

Lease - 155 years from 1 January 2002

Ideal investment or for first time buyer.

Available with No Onward Chain.

Situation;

The town offers an extensive range of shops, services and facilities. There are three supermarkets (including a Waitrose) a range of nationally and locally owned shops and businesses, together with a modern hospital and leisure centre in the attractive setting of Simmons Park.

There is schooling from infant to sixth form level with the college rated 'Outstanding' by Ofsted. The Dartmoor National Park offers hundreds of square miles of superb unspoilt scenery.

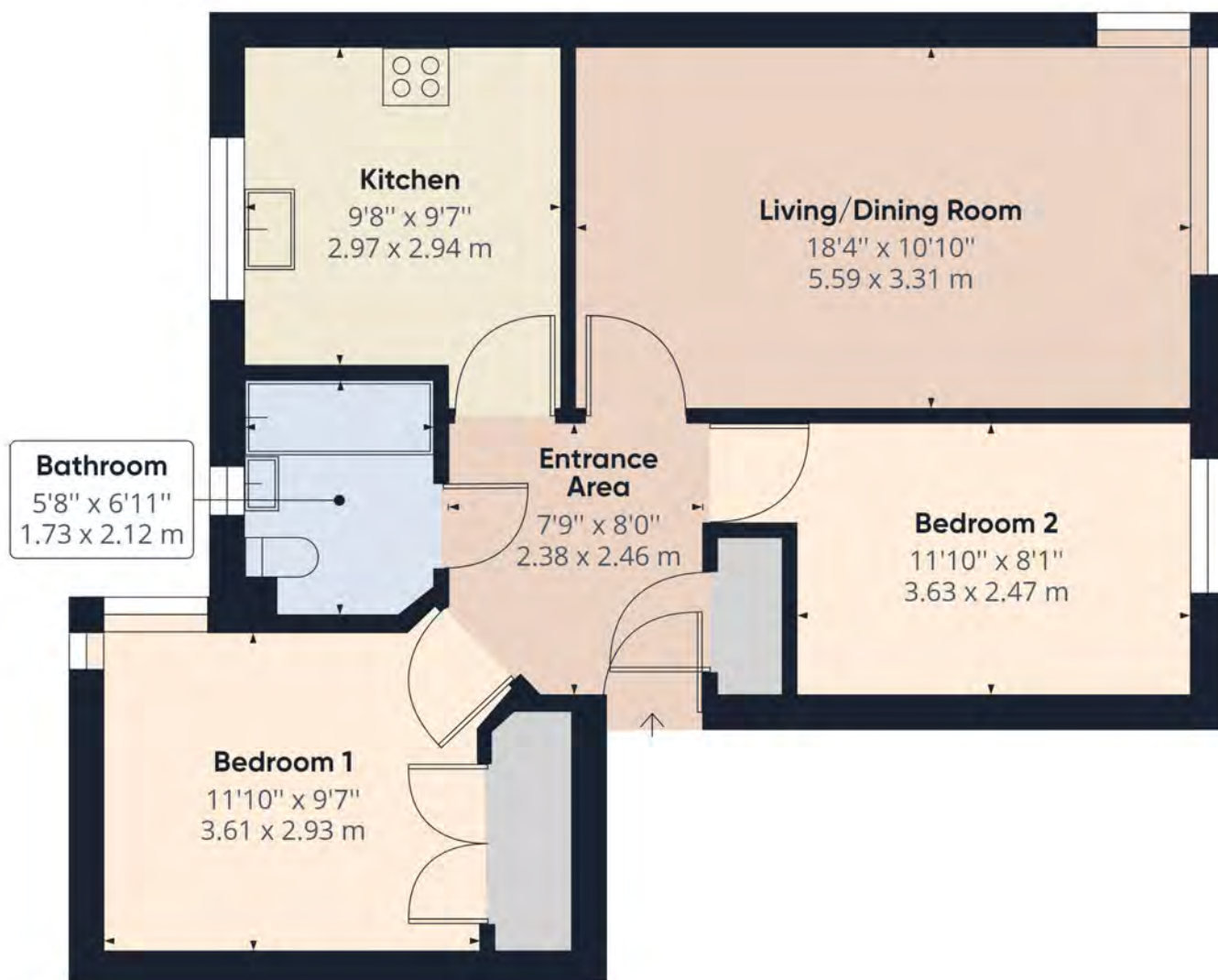
Changing Lifestyles



Please do not hesitate to contact
the team at
Bond Oxborough Phillips
Sales & Lettings on
01837 500600
for more information or to
arrange an accompanied viewing
on this property.

Scan here for
our Virtual Tour:





Have a property to sell or let?

If you are considering selling or letting your home, get in contact with us today on 01837 500600 to speak with one of our expert team who will be able to provide you with a free valuation of your home.

We have the facility to refer purchasers and vendors to conveyancing, mortgage advisors and Surveyors. It is your decision if you choose to deal with any of these companies however should you choose to use them we would receive a referral fee from them for recommending you. We will receive a referral fee between £50 - £300 depending on the company & individual circumstances. We have carefully selected these associates for the quality of their work and customer service levels.

Consumer Protection Regulations: We have not tested any apparatus, equipment, fixtures and fittings or services and so cannot verify that they are in working order or fit for the purpose. References to the Tenure of a Property are based on information supplied by the seller. We have not had sight of the Title Documents. A buyer is advised to obtain verification from their solicitor or surveyor. Floorplans shown are for guidance only and should not be relied upon. Items shown in photographs are NOT included unless specifically mentioned within these details. They may however be able by separate negotiation. You are advised to check the availability of this property before travelling any distance to view. Particulars are produced in good faith to the best of our knowledge and are set out as a general guide only.