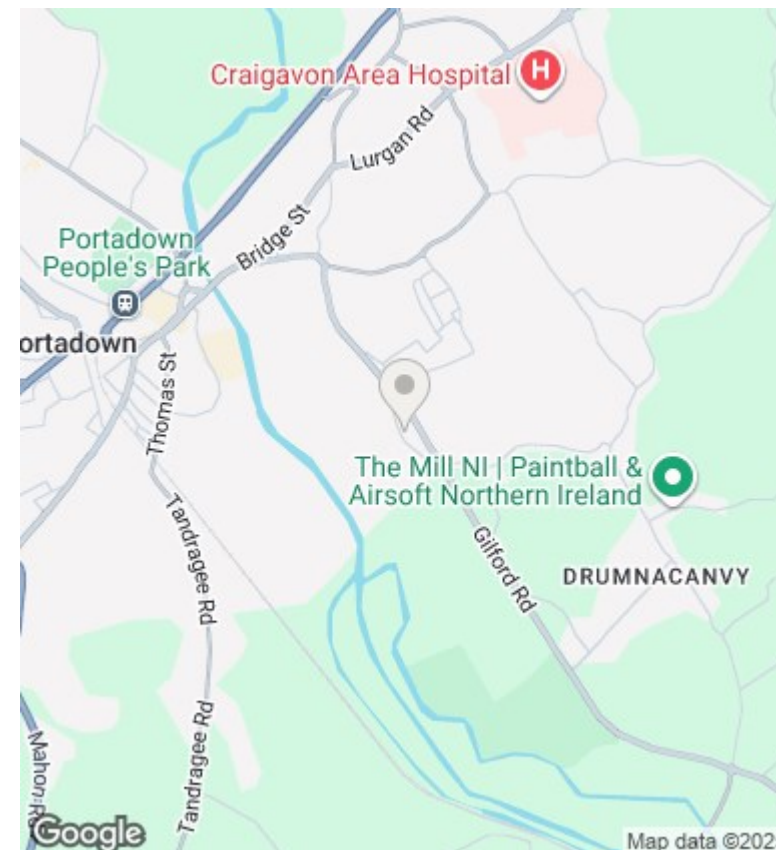
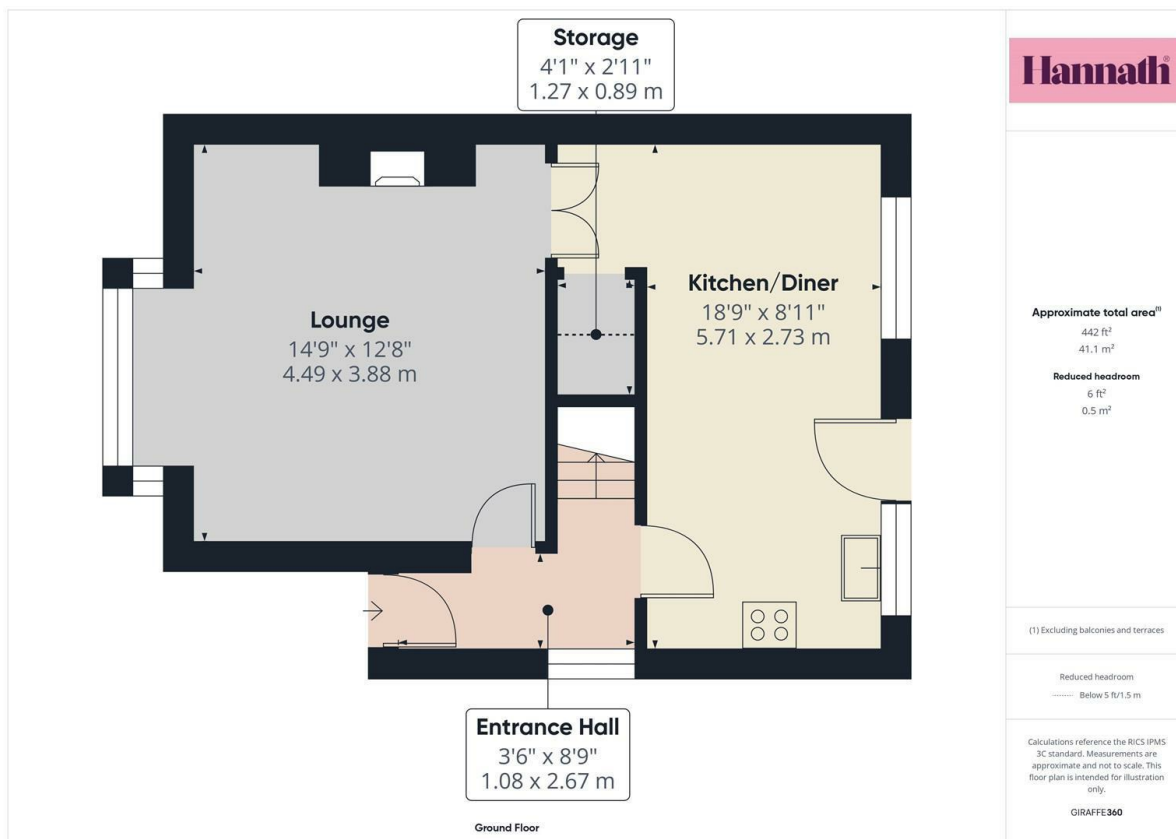




## 18 Manderley Court, Portadown, Craigavon, County Armagh, Asking Price £154,950

- Well presented three bedroom semi-detached home
- Bedrooms with built in storage
- PVC double glazed windows
- Ideal purchase for first time buyers and investors
- Spacious lounge with feature fireplace
- Three piece bathroom suite
- Off street parking
- Modern kitchen/diner with integrated appliances
- Fully enclosed rear garden
- Popular residential location



## Directions

Located just off the Old Gilford Road, Portadown.

## Viewings

Viewings by arrangement only. Call 02838 399911 to make an appointment.

## Council Tax Band

Northern Ireland

## EPC Rating:

Energy Efficiency Rating		
	Current	Potential
Very energy efficient - lower running costs		
(92 plus) <b>A</b>		
(81-91) <b>B</b>		
(69-80) <b>C</b>		
(55-68) <b>D</b>		
(39-54) <b>E</b>		
(21-38) <b>F</b>		
(1-20) <b>G</b>		
Not energy efficient - higher running costs		
<b>Northern Ireland</b>	EU Directive 2002/91/EC	