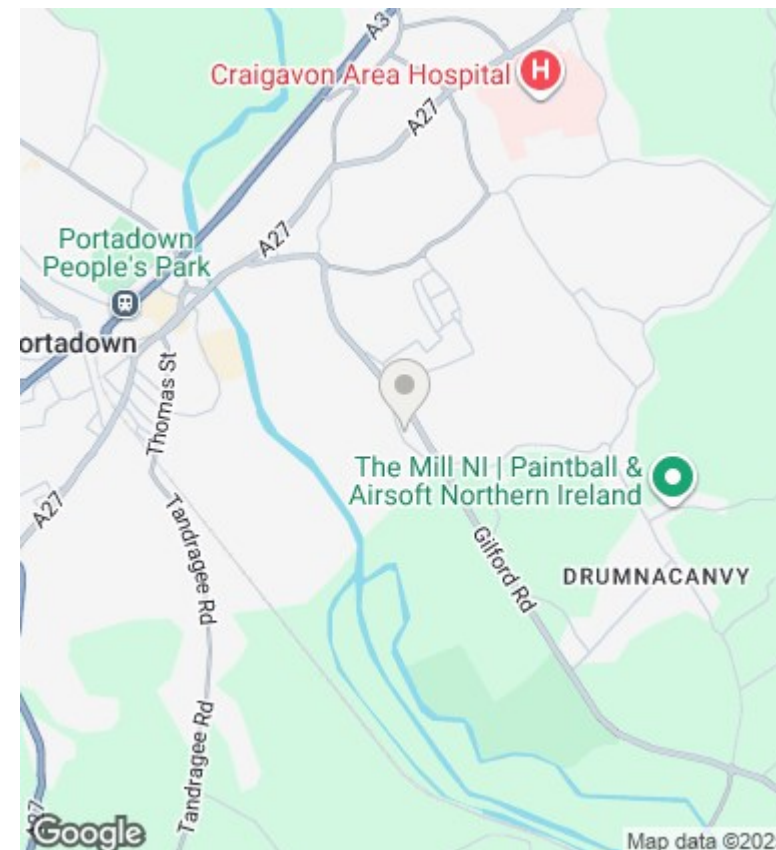
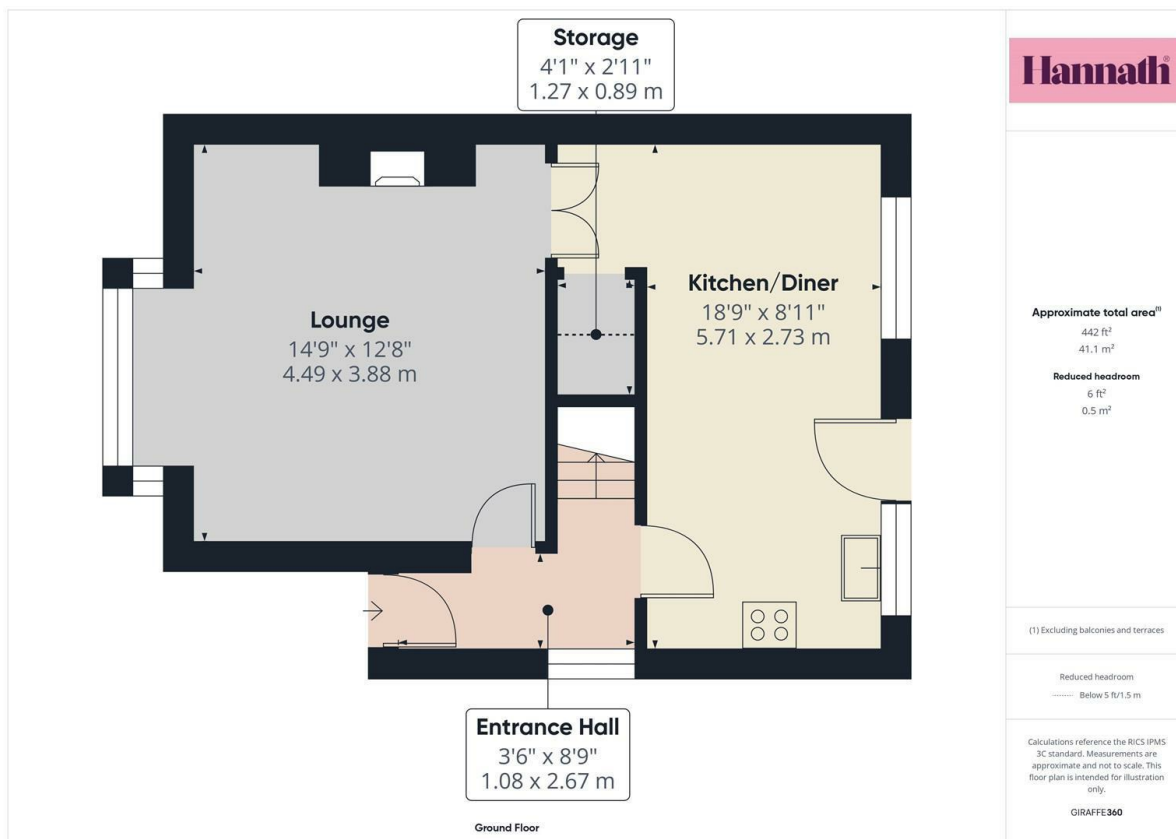




## 18 Manderley Court, Portadown, Craigavon, County Armagh, Offers Over £160,000

- Well presented three bedroom semi-detached home
- Bedrooms with built in storage
- PVC double glazed windows
- Ideal purchase for first time buyers and investors
- Spacious lounge with feature fireplace
- Three piece bathroom suite
- Off street parking
- Modern kitchen/diner with integrated appliances
- Fully enclosed rear garden
- Popular residential location



## Directions

Located just off the Old Gilford Road, Portadown.

## Viewings

Viewings by arrangement only. Call 02838 399911 to make an appointment.

## Council Tax Band

Northern Ireland

## EPC Rating:

| Energy Efficiency Rating                    |                         |           |
|---|-------------------------|-----------|
|   | Current                 | Potential |
| Very energy efficient - lower running costs |                         |           |
| (92 plus) <b>A</b>                          |                         |           |
| (81-91) <b>B</b>                            |                         |           |
| (69-80) <b>C</b>                            |                         |           |
| (55-68) <b>D</b>                            |                         |           |
| (39-54) <b>E</b>                            |                         |           |
| (21-38) <b>F</b>                            |                         |           |
| (1-20) <b>G</b>                             |                         |           |
| Not energy efficient - higher running costs |                         |           |
| <b>Northern Ireland</b>                     | EU Directive 2002/91/EC |           |