

Coronation Gardens, Lisburn,
County Down, BT27

**Asking Price: £130,000 To be
advised**

 **Reeds Rains**

[reedsrains.co.uk](https://www.reedsrains.co.uk)

Coronation Gardens, Lisburn, County Down, BT27

Asking Price: £130,000 To be advised

Council Tax Band:
EPC Rating: E

End of Terrace House. This charming 2-bedroom property boasts a spacious garden, ideal for outdoor entertaining. With a modern kitchen and comfortable living space, this home offers a perfect blend of style and functionality. Prime location with easy access to amenities and transport links.

Entrance Hall

Living Room

12'9" x 10'10" (3.89m x 3.3m)
Feature fireplace with back boiler, laminate flooring.

Kitchen/ Diner

16'9" x 7'3" (5.1m x 2.2m)
Exceptional range of modern fitted high and low level units, laminate work tops, inlaid sink unit, built-in ceramic hob and electric oven, over head extractor fan. Open to dining area.

Landing

Bedroom 1

12' x 10'2" (3.66m x 3.1m)

Bedroom 2

10'9" x 7'1" (3.28m x 2.16m)

Bathroom

White suite comprising panelled bath, wash handbasin, low level WC, panelling.

Rear Gardens

Enclosed to rear, oil fired boiler and oil storage tank.

Driveway/ Car Parking To Side.

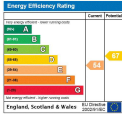
To side

Road, Belfast, Co Antrim, N Ireland BT7 2FZ, 10 High Street, Carrickfergus, Co Antrim, N Ireland BT38 7AF, 8/8A Carnmoney Road, Glengormley, County Antrim, N Ireland BT36 6HN, 14/16 Market Street, Lisburn, County Antrim , N Ireland BT28 1AB and 2 Frances Street, Newtownards, County Down, N Ireland BT23 4JA are operated by Favsko NI Limited which is independently owned and operated under a Licence from Reeds Rains Limited.

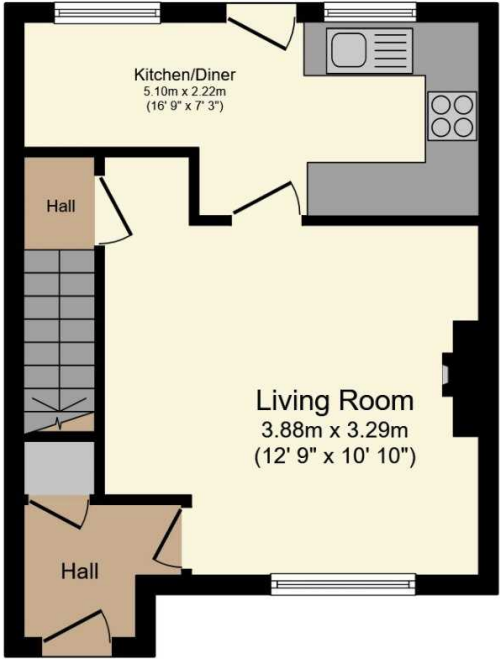
All Measurements
All Measurements are Approximate.

Laser Tape Clause
All measurements have been taken using a laser tape measure and therefore, may be subject to a small margin of error.

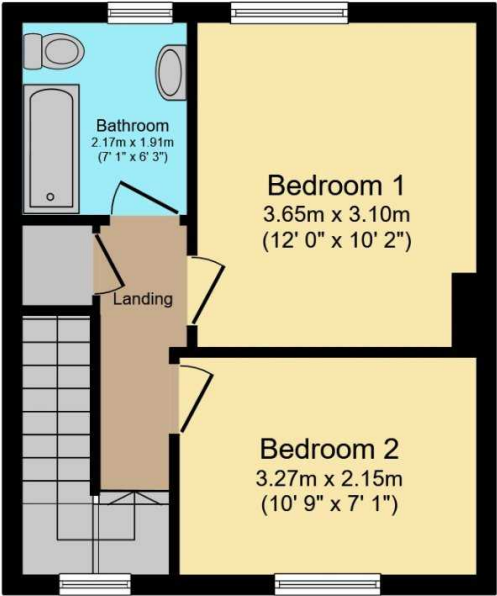
Floorplan Clause
Measurements are approximate. Not to Scale. For illustrative purposes only.



For full EPC please contact the branch.



Ground Floor



First Floor

Total floor area 64.1 sq.m. (690 sq.ft.) approx

This floor plan is for illustrative purposes only. It is not drawn to scale. Any measurements, floor areas (including any total floor area), openings and orientation are approximate. No details are guaranteed, they cannot be relied upon for any purpose and they do not form part of any agreement. No liability is taken for any error, omission or misstatement. A party must rely upon its own inspection(s).
Powered by www.focalagent.com

The Reeds Rains branches at 350 Upper Newtownards Road, Ballyhackamore, Belfast, N Ireland BT4 3EX, 18 Main Street, Bangor, Co Down, N Ireland BT20 5AG, Somerset House, 240-242 Ormeau

We may refer you to recommended providers of ancillary services such as Conveyancing, Mortgages, Insurance and Surveying. We may receive a referral fee for recommending their services. You are not under any obligation to use the services of the recommended provider, which may also be an associated company of Reeds Rains.

Other important information which you will need to know about this property can be found at reedsrains.co.uk