



Bond
Oxborough
Phillips

Changing Lifestyles

6 Whitehall Drive

Bere Alston

PL20 7DJ



Asking Price - £315,000



Changing Lifestyles

01822 600700

6 Whitehall Drive, PL20 7DJ



- Well Presented Link Detached Bungalow
- Sitting on a Level Plot
- Paved Driveway & Garage
- Offering Two Bedrooms
- Modern Kitchen & Bathroom
- Large Conservatory
- Well Maintained Rear Garden
- Two Sheds & Greenhouse
- Multi Fuel Burner



Situated on a level plot in a peaceful residential road, this beautifully presented two-bedroom link-detached bungalow offers easy, single-level living in the sought-after village of Bere Alston. With a spacious west-facing garden, paved driveway, and attached garage, the property is ideal for those seeking comfort, practicality, and a touch of elegance.

Stepping inside, you're welcomed by a central hallway with oak doors leading to all rooms, giving an immediate sense of quality and care. At the front of the home, the bright and airy living room enjoys a dual aspect and features a stylish inset multi-fuel stove, creating a cosy yet spacious setting. To the rear, the modern kitchen is finished to a high standard with Corian worktops, sleek cabinetry, an induction hob, and integrated Neff appliances. A wide opening leads directly into the generous conservatory, a warm and versatile space currently used as a dining and snug area. Thanks to its westerly orientation, it captures the afternoon and evening sun beautifully and opens directly onto a decked terrace.



Both bedrooms are good-sized doubles, with the principal bedroom benefiting from fitted wardrobes. The contemporary bathroom has been recently updated and features a walk-in shower, integrated cabinetry, and a clean, modern finish.

Outside, the front garden has been smartly designed with low maintenance in mind, featuring a paved driveway with space for two vehicles, attractive raised borders, and mature planting. The garage is equipped with power, lighting, and an electric door, along with access to the rear garden. The west-facing rear garden is a standout feature—generously sized and thoughtfully planted with azaleas, a magnolia tree, and established shrubs. There's also a large decked seating area, a greenhouse, and two sheds, making this a practical and private outdoor retreat.

Served by all mains utilities and warmed by a gas-fired combi boiler, this superbly maintained bungalow is a real credit to the current owners. It offers a rare opportunity to enjoy a peaceful lifestyle in a well-regarded village setting—early viewing is highly recommended.

Changing Lifestyles

The property is perfect for those who appreciate a touch of village life without being engulfed by the hustle and bustle. Just a short stroll away, you'll find numerous charming trails, perfect for taking in the stunning Tamar Valley scenery. Ideally situated, the village offers convenient access to the picturesque beaches of Devon and Cornwall, while Plymouth and Tavistock are just a 20-minute drive away.

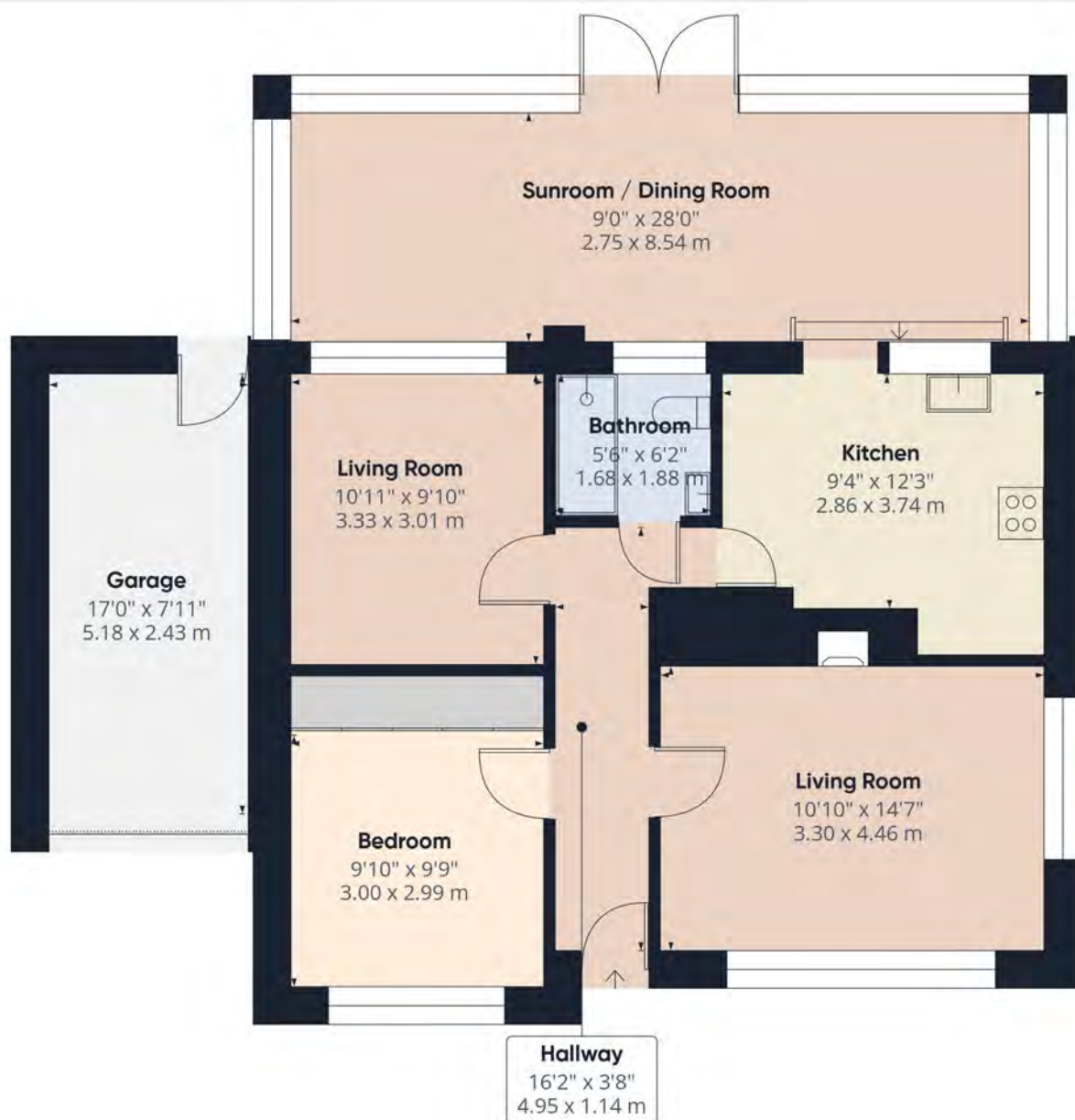
Bere Alston is a charming village, idyllically situated away from the main thoroughfares and the bustle of contemporary life. This quaint locale boasts a unique railway station on the Tamar Valley Line, offering swift connections to the picturesque villages of Bere Ferrers and Calstock, and reaching Plymouth City in approximately 20 minutes. The village is well-equipped with a variety of amenities, including a post office that houses a local bakery, two small supermarkets, a butcher, a hairdresser, a café/restaurant, a takeaway, a pharmacy, a doctor's surgery, a primary school, a pub, bus services, and a garage with a petrol station.



Please do not hesitate to contact
the team at
Bond Oxborough Phillips
Sales & Lettings on
01822 600700
for more information or to
arrange an accompanied viewing
on this property.

Scan here for
our Virtual Tour:





Have a property to sell or let?

If you are considering selling or letting your home, get in contact with us today on 01822 600700 to speak with one of our expert team who will be able to provide you with a free valuation of your home.

We have the facility to refer purchasers and vendors to conveyancing, mortgage advisors and Surveyors. It is your decision if you choose to deal with any of these companies however should you choose to use them we would receive a referral fee from them for recommending you. We will receive a referral fee between £50 - £300 depending on the company & individual circumstances. We have carefully selected these associates for the quality of their work and customer service levels.

PLEASE NOTE

Before any sale is formally agreed, we have a legal obligation under the Money Laundering regulations and Terrorist Financing Act 2017 to obtain proof of your identity and of your address, take copies and retain on file for five years and will only be used for this purpose. We carry out this through a secure platform to protect your data. Each purchaser will be required to pay £29.99 upon an offer verbally being agreed to carry out these checks prior to the property being advertised as sale agreed.

Consumer Protection Regulations: We have not tested any apparatus, equipment, fixtures and fittings or services and so cannot verify that they are in working order or fit for the purpose. References to the Tenure of a Property are based on information supplied by the seller. We have not had sight of the Title Documents. A buyer is advised to obtain verification from their solicitor or surveyor. Floorplans shown are for guidance only and should not be relied upon. Items shown in photographs are NOT included unless specifically mentioned within these details. They may however be able by separate negotiation. You are advised to check the availability of this property before travelling any distance to view. Particulars are produced in good faith to the best of our knowledge and are set out as a general guide only.