



## 1B ROWALLANE CLOSE

Saintfield BT24 7PA

- Detached Family Home
- Well Presented and Spacious Accommodation
- Four Bedrooms incl Master with Ensuite
- Family Bathroom
- Open Plan Kitchen/Dining through to Sunroom with wood burning stove
- Two Reception Rooms, one with wood burning stove
- Detached Garage
- Front and Rear gardens laid in lawn with paved patio areas
- Convenient and Popular Location
- Triple Glazing and Central Heating

Energy Efficiency Rating		
	Current	Potential
Very energy efficient - lower running costs		
(92 plus) <b>A</b>		
(81-91) <b>B</b>	84	84
(69-80) <b>C</b>		
(55-68) <b>D</b>		
(39-54) <b>E</b>		
(21-38) <b>F</b>		
(1-20) <b>G</b>		
Not energy efficient - higher running costs		
Northern Ireland		EU Directive 2002/91/EC

**Asking Price £369,950**

# 1B Rowallane Close

, Saintfield, BT24 7PA



## Entrance Hall

10'10" x 3'3" (3.29m x 0.99m)

PVC glazed front door into bright entrance hall with tiled floor.

## Lounge

16'10" x 11'2" (5.13m x 3.40m)

Feature wood burning corner stove and solid oak wooden flooring.

## Family Room

10'6" x 11'6" (3.19m x 3.51m)

Feature woodburning corner stove and tiled floor.

## Kitchen/Dining Room

9'4" x 24'10" (2.84m x 7.57m)

Modern fitted Oak kitchen with a range of high and low rise units with integrated sink unit. Double oven and microwave; hob with overhead stainless steel extractor fan. Integrated fridge/freezer and dish washer. Tiled floor. Open plan through to space for dining and sunroom.

## Sun Room

Vaulted ceiling and wood burning stove. Double doors leading to garden.

## WC

3'3" x 6'7" (0.99m x 2.01m)

White suite encompassing low flush W/C and wash hand basin.

## Landing

6'11" x 16'10" (2.11m x 5.13m)

Oak balustrade staircase to landing. Window to side.

## Bedroom One

10'6" x 13'0" (3.19m x 3.96m)

Rear facing. Built in storage cupboard.

## En-suite

10'6" x 3'7" (3.19m x 1.09m)

White suite encompassing low flush W/C, wash hand basin and shower.

## Bedroom Two

9'6" x 10'2" (2.90m x 3.10m)

Front facing. Built in storage cupboard.

## Bedroom Three

9'6" x 9'10" (2.90m x 3.00m)

Front facing. Built in storage cupboard.

## Bathroom

White suite encompassing low flush W/C, wash hand basin, free standing bath and corner shower. Feature tiled walls and floor.

## Bedroom Four

10'1" x 7'5" (3.07m x 2.26m)

Rear facing. Built in storage cupboard.

## Garage

Up and over door. Door to side. Power and light. Low rise units with integrated stainless steel sink unit.

## OUTSIDE

Approached via double wooden gates to tarmaced driveway with ample space for parking leading to a detached garage. To the front - garden laid in lawn with an array of mature shrubs and paved patio area. To the rear - enclosed rear garden laid in lawn with paved patio area ideal for outside entertaining.

## Other Specifications

Triple Glazing and Central Heating.  
Outdoor lighting and water tap.

## DIRECTIONS

Rowallane Close is situated on the A7 Road (Crossgar Road) between Saintfield and Crossgar, just opposite the beautiful National Trust Property, Rowallane Gardens.



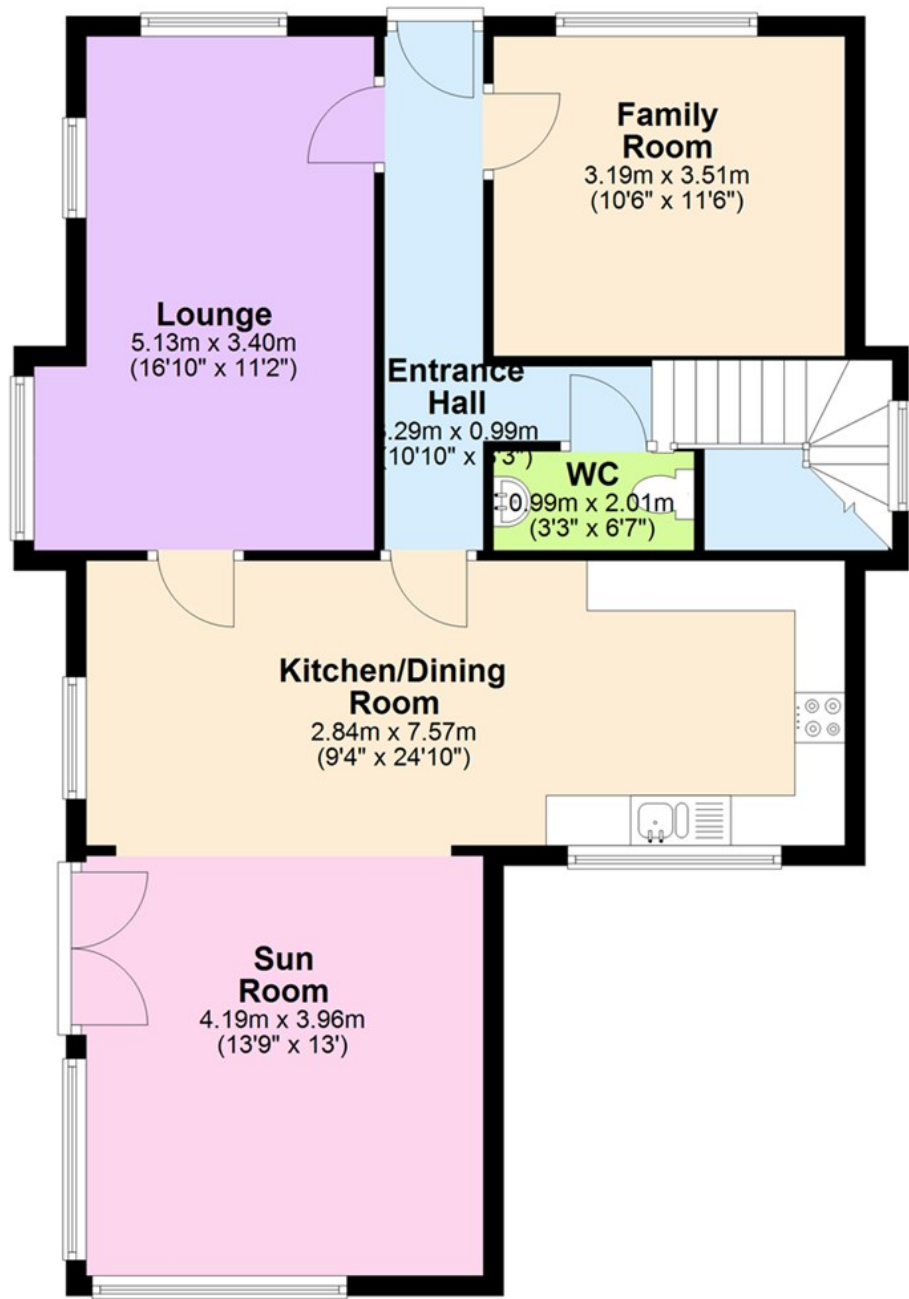
## Directions



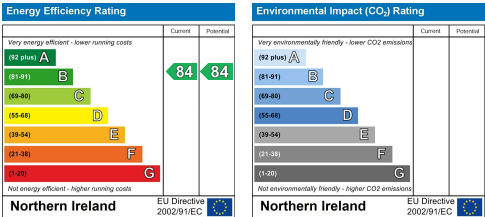


Floor Plan

Ground Floor



These particulars, whilst believed to be accurate are set out as a general outline only for guidance and do not constitute any part of an offer or contract. Intending purchasers should not rely on them as statements of representation of fact, but must satisfy themselves by inspection or otherwise as to their accuracy. No person in this firms employment has the authority to make or give any representation or warranty in respect of the property.



ULSTERPROPERTYSALES.CO.UK

<b>ANDERSONSTOWN</b> 028 9060 5200	<b>BANGOR</b> 028 9127 1185	<b>DOWNPATRICK</b> 028 4461 4101	<b>GLENGORMLEY</b> 028 9083 3295	<b>RENTAL DIVISION</b> 028 9070 1000
<b>BALLYHACKAMORE</b> 028 9047 1515	<b>CARRICKFERGUS</b> 028 9336 5986	<b>DONAGHADEE</b> 028 9188 8000	<b>MALONE</b> 028 9066 1929	
<b>BALLYNAHINCH</b> 028 9756 1155	<b>CAVEHILL</b> 028 9072 9270	<b>FORESTSIDE</b> 028 9064 1264	<b>NEWTOWNARDS</b> 028 9181 1444	



Aaron Ferris trading under licence as Ulster Property Sales (Ballynahinch)  
©Ulster Property Sales is a Registered Trademark