

Tim Martin
— .co.uk



6 Ilford Drive
Crossnacreevy, Belfast
BT6 9SW

Offers Around
£179,950

www.timmartin.co.uk
Telephone 028 91 878956

SUMMARY

Situated in a quiet cul-de-sac in this ever popular residential area, this semi detached bungalow is perfect for the first time buyer, young couple or those looking to downsize.

The property is in need of some modernisation, however, allows the purchaser to put their own stamp on the property and create their own dream home. The accommodation comprises of a spacious lounge, modern fitted kitchen which opens through to the bright and spacious conservatory, two well proportioned bedrooms and a bathroom, fitted with a white suite. The roof space is floored and offers the potential to convert to an additional bedroom, if desired (subject to planning).

Outside a spacious driveway provides excellent off street parking and leads to the detached garage. Front and rear gardens are laid out in lawn and provide excellent outdoor space.

Perfectly located just off the Ballygowan Road in Crossnacreevy, the property affords a convenient commute into Belfast City Centre with excellent road networks and public transport links. Many primary and secondary schools in the surrounding and Greater Belfast area are easily accessible as too is Forestside Shopping Centre.

FEATURES

- Semi Detached Property Located in this Popular and Much Sought After Area
- Two Good Sized Bedrooms
- Spacious Lounge and Conservatory
- Modern Fitted Kitchen and Bathroom With White Suite
- uPVC Double Glazing and Electric Heating
- Floored Roof Space – Potential to Convert (STPP)
- Spacious Driveway Leading to Detached Garage
- Front and Rear Gardens Laid out in Lawn with Paved Patio Area
- Within Walking Distance to Public Transport and within Close Proximity of Belfast City Centre
- Ideal for the First Time Buyer, Young Couple or Those Wishing to Downsize

Entrance Hall

Glazed hardwood entrance door with matching side light; telephone connection point; access to roofspace (accessed via a Slingsby type ladder - floored).

Lounge

19'3 x 11'1 (5.87m x 3.38m)

Tiled fireplace and hearth; tv aerial connection point.

Kitchen

13'7 x 11'1 (4.14m x 3.38m)

Range of wood laminate high and low level cupboards and drawers incorporating single drainer stainless steel sink unit with mixer taps; integrated electric double oven with 4 ring ceramic hob; extractor hood over; space and plumbing for washing machine and tumble dryer; Neff dishwasher; Whirlpool fridge/freezer; Sharp microwave; formica worktops; tiled splashback; tiled floor; hotpress with lagged copper cylinder; glazed uPVC door to:-

Conservatory

13'11 x 9'0 (4.24m x 2.74m)

Tiled floor; glazed uPVC double door to rear.

Bedroom 1

11'11 x 10'1 (3.63m x 3.07m)

Built in sliding robes.

Bedroom 2

11'11 x 9'60 (3.63m x 2.74m)

Built in sliding robes; built in storage cupboard.

Bathroom

6'7 x 5'3 (2.01m x 1.60m)

White suite comprising panelled bath with chrome taps; Aqualisa electric shower unit with wall mounted telephone shower attachment; pedestal wash hand basin; low flush wc with wooden seat; PVC wall cladding; PVC tongue and groove ceiling; tiled effect laminate floor.

Outside

Spacious driveway leading to:-

Detached Garage

18'0 x 9'0 (approx) (5.49m x 2.74m (approx))

Up and over door; light and power points.

Gardens

Front gardens laid out in lawn; gravelled flowerbed; enclosed rear gardens laid out in lawn with paved patio area; planted with mature hedging and shrubery.

Capital / Rateable Value

£115,000. Rates Payable = £1046.27 Per Annum (Approx)

Ground Floor

Approx. 84.6 sq. metres (910.3 sq. feet)



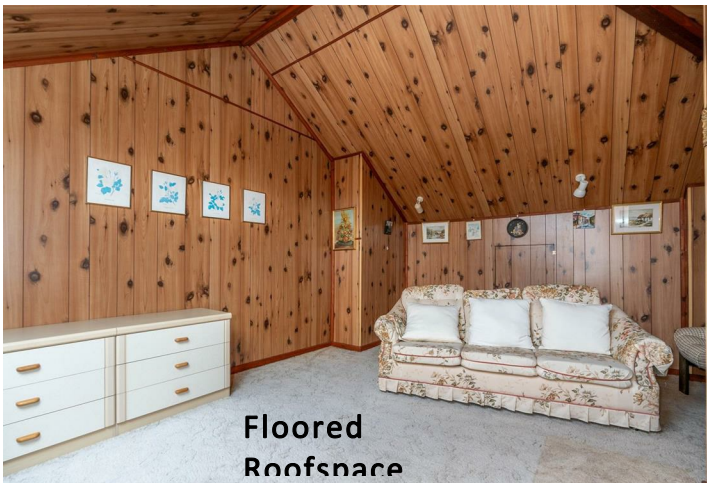
Total area: approx. 84.6 sq. metres (910.3 sq. feet)

Photos and Plans by houseflyni.co.uk
Plan produced using PlanUp.

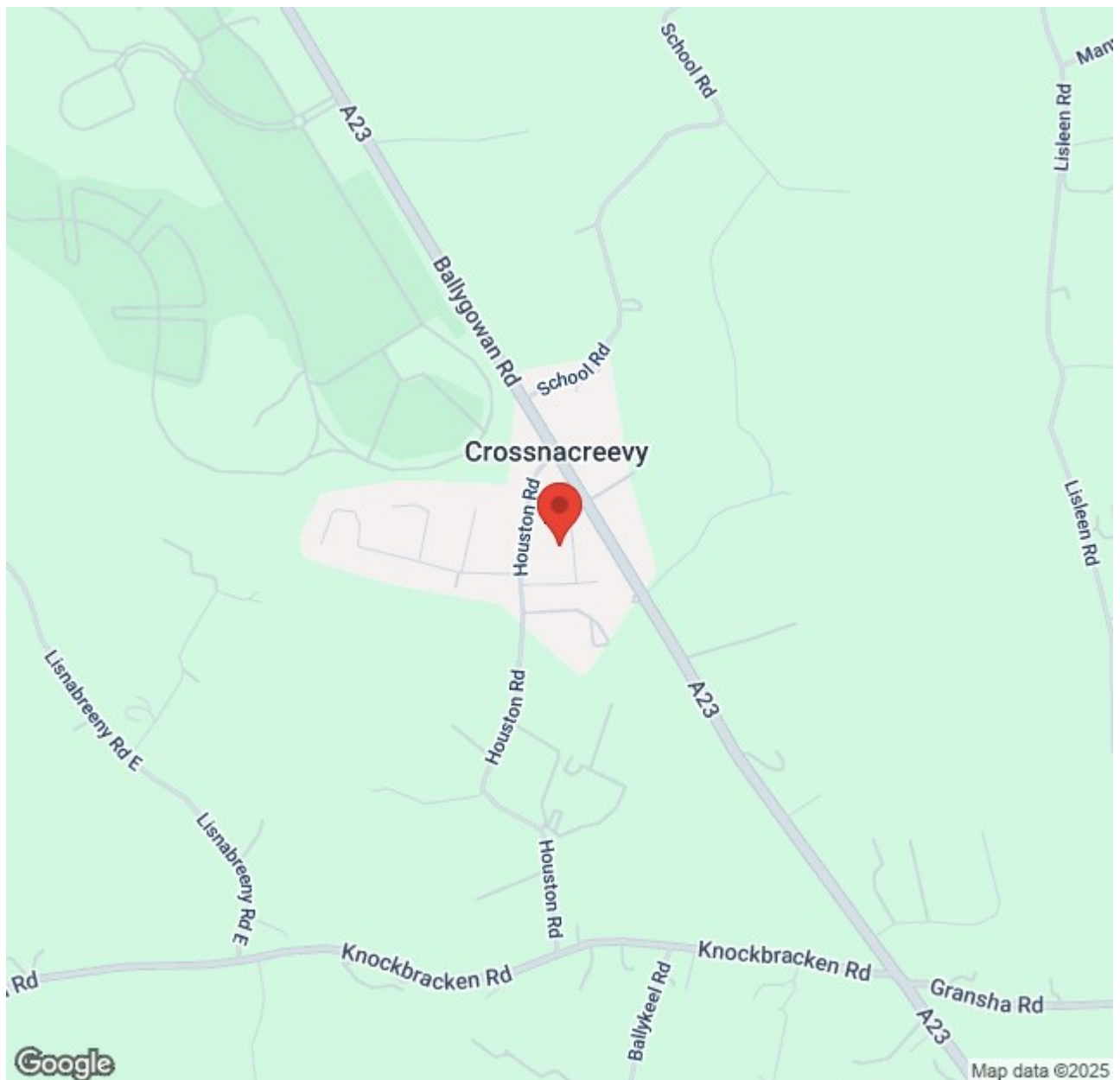
6 Ilford Drive, Crossnacreevy











Energy Efficiency Rating		
	Current	Potential
Very energy efficient - lower running costs		
(92 plus) A		
(81-91) B		
(69-80) C		
(55-68) D		
(39-54) E		
(21-38) F	27	47
(1-20) G		
Not energy efficient - higher running costs		

Comber ■
27 Castle Street, Comber, BT23 5DY
T 028 91 8789596

Saintfield
1B Main Street, Saintfield, BT24 7AA
T 028 97 568300

Tim Martin & Company for themselves and for the vendors of this property have endeavoured to prepare these sales details as accurate and reliable as possible for the guidance of intending purchasers or lessees. These particulars are given for general guidance only and do not constitute any part of an offer or contract. The seller and us as agents, do not make any representation or give any warranty in relation to the property. We would recommend that all information contained in this brochure about the property be verified by yourself or professional advisors. Services, fittings and equipment referred to in the sales details have not been tested (unless otherwise stated) and no warranty will be given as to their condition. All measurements contained within this brochure are approximate. Please contact us prior to viewing the property. If there is any point of particular importance to you we would be pleased to provide additional information or make further enquiries. We will also confirm that the property remains available. This is particularly important if you are contemplating travelling some distance to view the property.